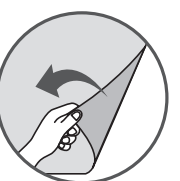
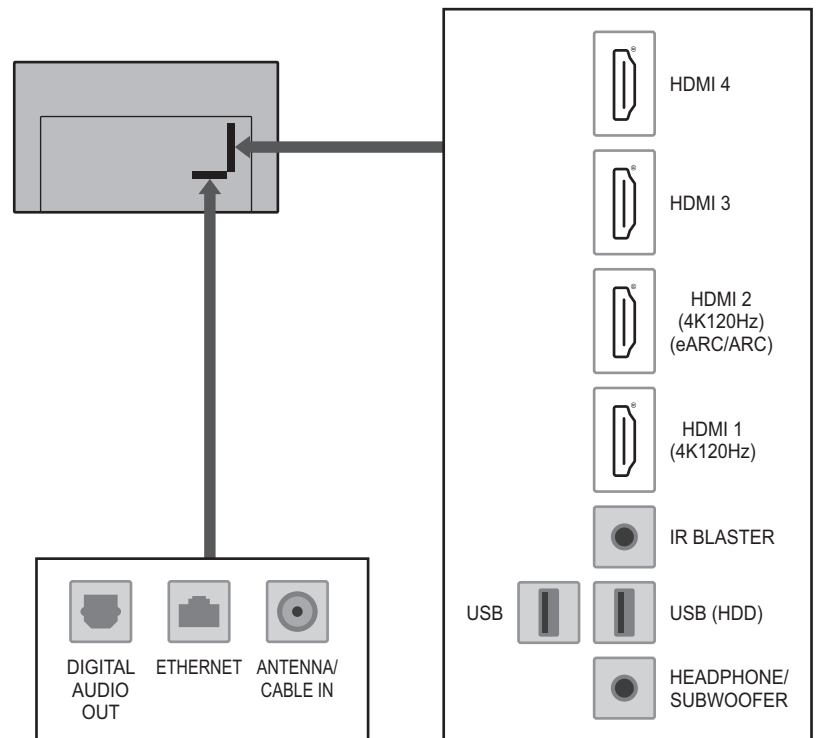
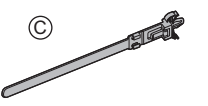
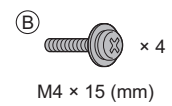
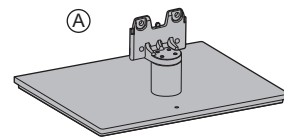
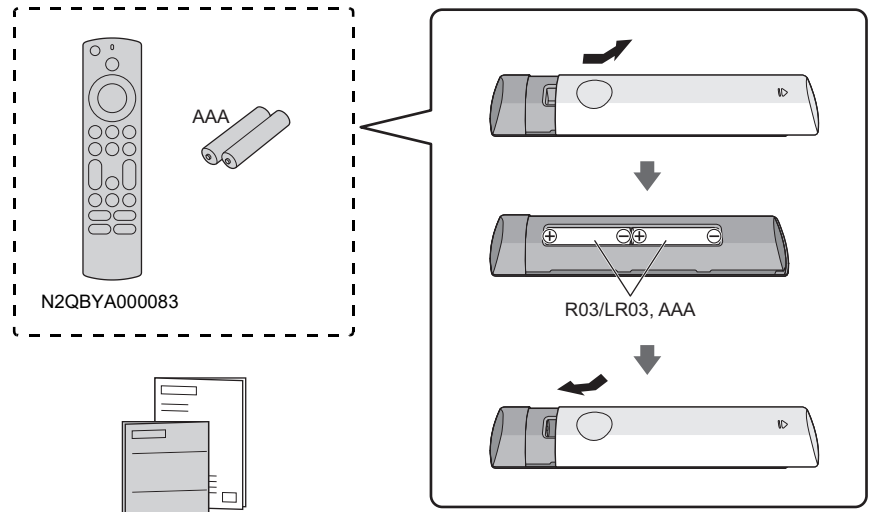
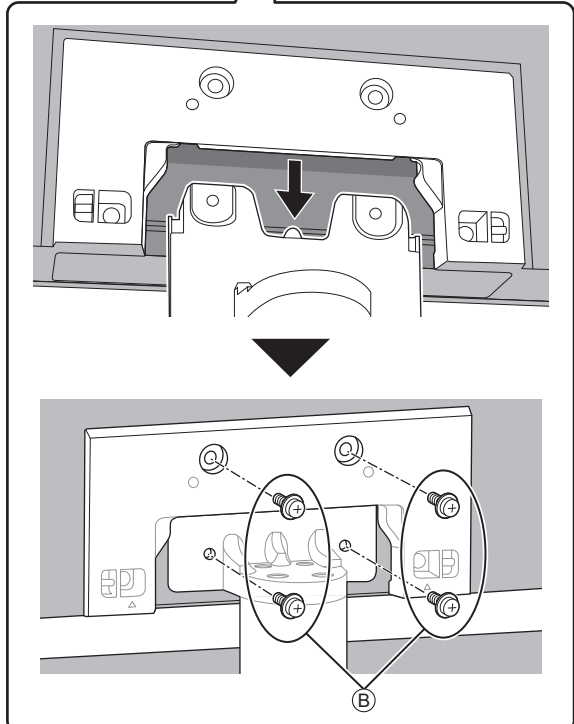
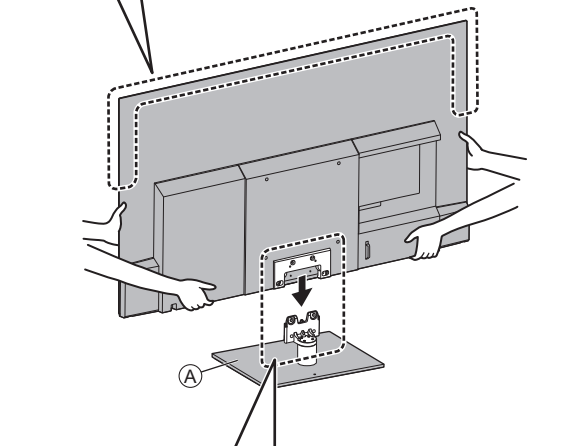
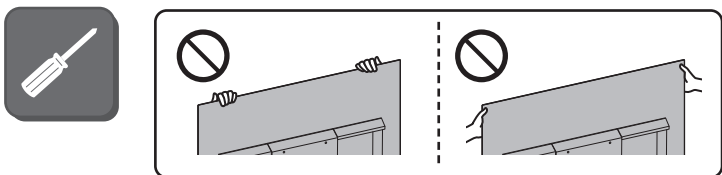
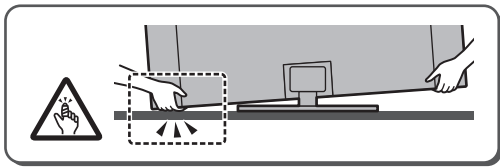
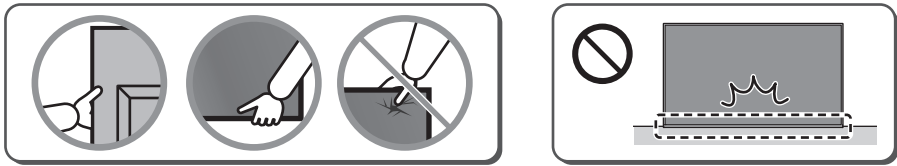
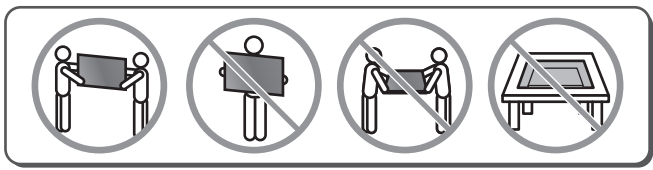
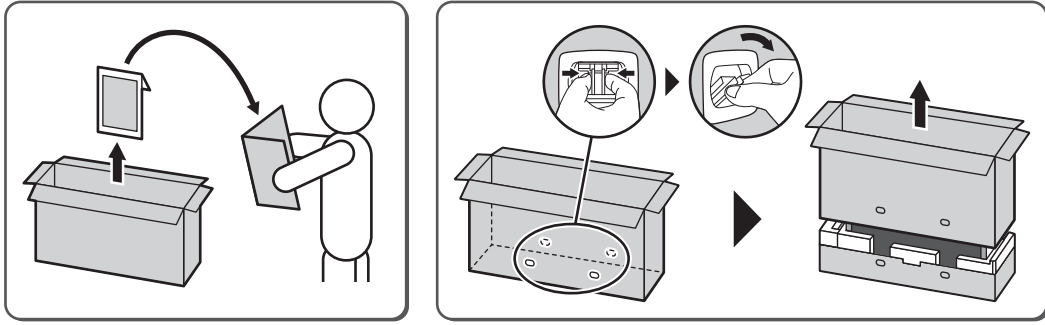
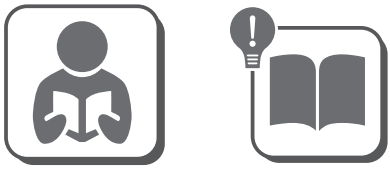


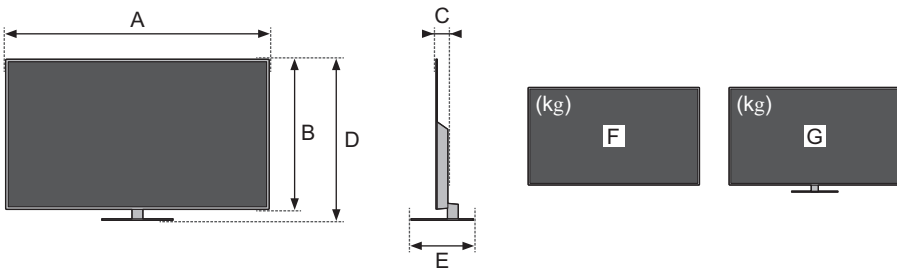
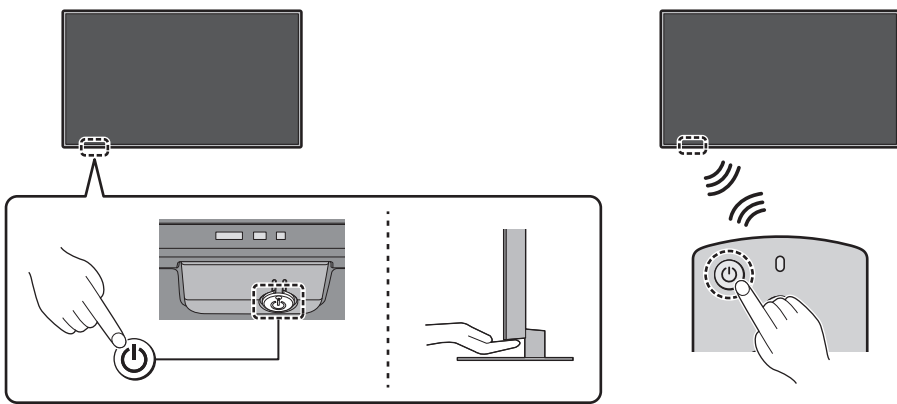
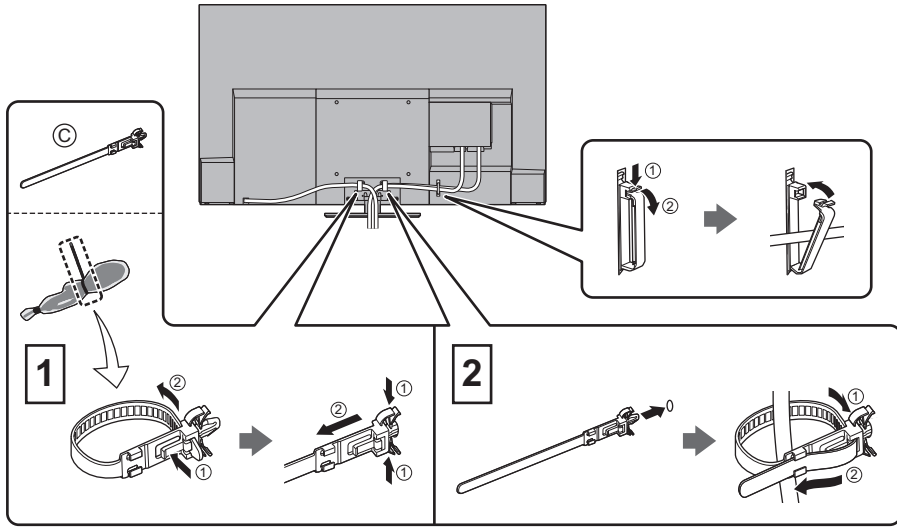


OLED TV

55 in. TV-55Z85AP

65 in. TV-65Z85AP





	A	B	C	D	E	F	G
	mm (")					kg (lb.)	
55 in.	1,227 (48.3)	714 (28.1)	69 (2.7)	765 (30.1)	303 (11.9)	15.0 (30.0)	19.0 (41.9)
65 in.	1,448 (57.0)	838 (33.0)	69 (2.7)	889 (35.0)	303 (11.9)	17.5 (38.5)	21.5 (47.4)



The terms HDMI, HDMI High-Definition Multimedia Interface, HDMI Trade dress and the HDMI Logos are trademarks or registered trademarks of HDMI Licensing Administrator, Inc.
 Los términos HDMI, HDMI High-Definition Multimedia Interface (Interfaz multimedia de alta definición), HDMI Trade Dress (diseño e imagen comercial HDMI) y los logotipos HDMI son marcas comerciales o marcas registradas de HDMI Licensing Administrator, Inc.

Please carefully read the "Safety Precautions" of the Owner's Manual before use. / Lea atentamente las "Medidas de seguridad" del Manual de instrucciones antes de usar el producto.