

Panasonic®

Operating Instructions
(Household use) Bikini Trimmer & Shaver

Model No. ES-WWV6



Thank you for purchasing this Panasonic product.
Before operating this unit, please read these instructions completely and save them for future use.

Panasonic Corporation of North America
Two Riverfront Plaza, Newark, NJ 07102-5490

Service • Assistance • Accessories

<https://shop.panasonic.com/personal-care>
<https://shop.panasonic.com/support>

<https://www.panasonic.com>

Safety precautions

Make sure to follow these instructions.

To prevent accidents, injuries or damage to property, please follow the instructions below.

⚠ WARNING Indicates potential hazard that could result in serious injury or death.

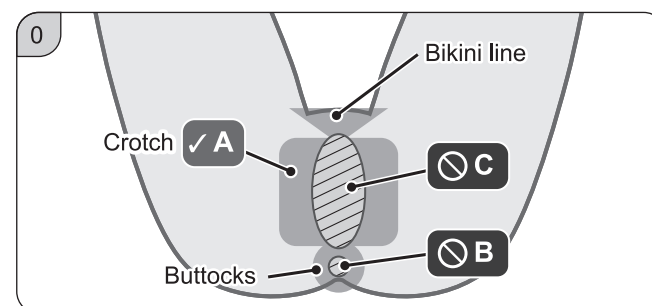
⚠ CAUTION Indicates potential hazard that could result in minor injury or property damage.

⚠ WARNING

- **Do not place within reach of children or infants. Do not let them use it.**
Doing so may cause injury or accidental ingestion of the accessories or removable of small parts.
- **Immediately stop using if there is an abnormality or malfunction.**
Failure to do so may cause fire or injury.
- **This appliance is not intended for use by persons (including children) with reduced physical, sensory or mental capabilities, or lack of experience and knowledge, unless they have been given supervision or instruction concerning use of the appliance by a person responsible for their safety. Children should be supervised to ensure that they do not play with the appliance.**
Failure to do so may cause an accident or injury.

⚠ CAUTION

- **Do not forcefully press the outer foil. Do not touch the outer foil with fingers or nails when in use.**
Doing so may cause injury to the skin or reduce the life of the outer foil.
- **Do not touch the blade section (metallic section) of the inner blade.**
Doing so may cause injury to your hands.
- **The following persons should not use this appliance:**
 - Persons with sensitive or delicate skin and persons with allergies
- **Do not use in the following body areas:**
 - Face, A: genitals (other than the outer lips of the vulva), B: anus and C: associated mucous membranes



- **Pre-existing injuries, rashes, moles, bruises, warts, pimples or any other protrusions, along with the surrounding areas of each**
- **Skin which is flaccid, limp, sagging, crepey, etc.**
- **Do not apply strong pressure to the skin or move repeatedly over the same area.**
- **Do not use with a jabbing motion.**
Doing so may result in skin inflammation, abrasions, bleeding or even more serious injury.
- **Pull the skin taut with your free hand whilst shaving.**
- **When using on hard-to-reach areas, please use a mirror or change position so that it is easier to see.**
Failure to do so may result in skin inflammation, abrasions and/or bleeding.
- **If skin problems appear after use, stop using the appliance and contact a dermatologist.**
Failure to do so may cause symptoms to worsen.

- **When storing or carrying, always attach the attachment or the shaver cap.**
Failure to do so may cause injury to the skin or reduce the life of the outer foil.
- **Check the outer foil for cracks or deformations before use.**
- **Be sure to use the provided skin guard when applying the trimmer head to your crotch or buttocks.**
- **Use this appliance only for shaving the bikini area (pubic areas).**
Failure to do so may cause injury to the skin.
- **Do not share with your family or others.**
Doing so may cause infection or inflammation.
- **Do not modify, disassemble or repair.**
Doing so may cause an accident or injury.
→ Contact an authorized service center for repair.
- **Do not throw the battery into fire or disassemble.**
- **The supply terminals are not to be short-circuited.**
Doing so may cause a burn or injury.
- **Always follow the cautions printed on the battery.**
- **Check the polarity of the battery (+ and -) and install it correctly.**
- **Remove the battery immediately and dispose of it safely when it is discharged.**
- **Remove the battery when not using the appliance for an extended period of time.**
- **Use the battery by the recommended use-by date.**
- **Non-rechargeable batteries are not to be recharged.**
Failure to do so may cause overheating or explosion of the battery, injury or contamination of surroundings due to leakage.

Important information

- Store the appliance in a place with low humidity after use. Leaving the appliance in a bathroom or similar area may cause a malfunction due to condensation or rust.
- Do not drop or hit against other objects.

Troubleshooting

If the problems still cannot be solved, contact the store where you purchased the appliance or a service center authorized by Panasonic for repair.

The appliance is not cutting as well as before.

- Replace the blade.

■ Guidelines for replacement

Shaver head	Outer foil	Approximately 1 year
	Inner blade	Approximately 2 years
Trimmer head		Approximately 3 years

- Replace with a new battery.
- Clean the hair dust.

The appliance is not working.

- Make sure the battery is installed correctly.
- Replace with a new battery.
- Clean the hair dust.

Specifications

Power supply	Dry-cell battery
Battery type	One LR6 (AA) alkaline battery • Sold separately

This product is intended for household use only.

Personal Care & Beauty Care Products

FOR USA ONLY

**30-Day Quality
Satisfaction Guarantee**

If you are dissatisfied with any Panasonic Personal Care & Beauty Care Products for any reason, simply return it to the place of purchase with a dated proof of purchase, in the original packaging, with all accessories, parts and instructions, within 30 days of the date of purchase for a full refund.
Abuse or misapplication of this product voids the guarantee.

PRODUCT REGISTRATION
(U.S. customers only)

Go to www.panasonic.com/register and register your product now to receive these benefits:

Safety Notification

We contact our customers in case of recall

Owner Verification

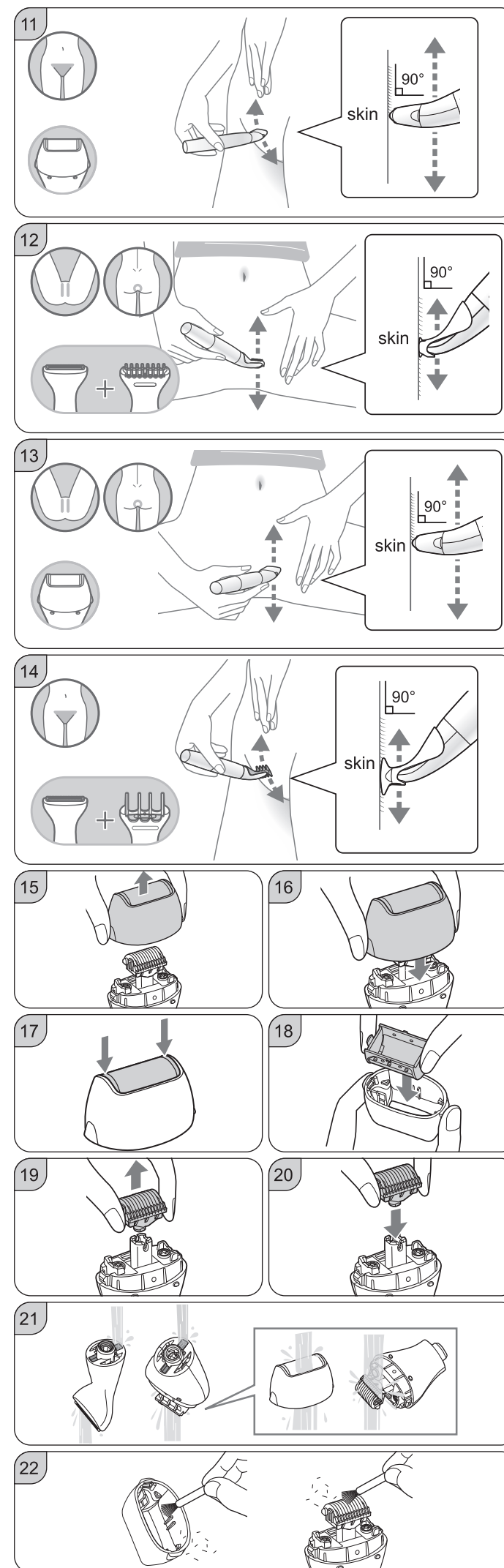
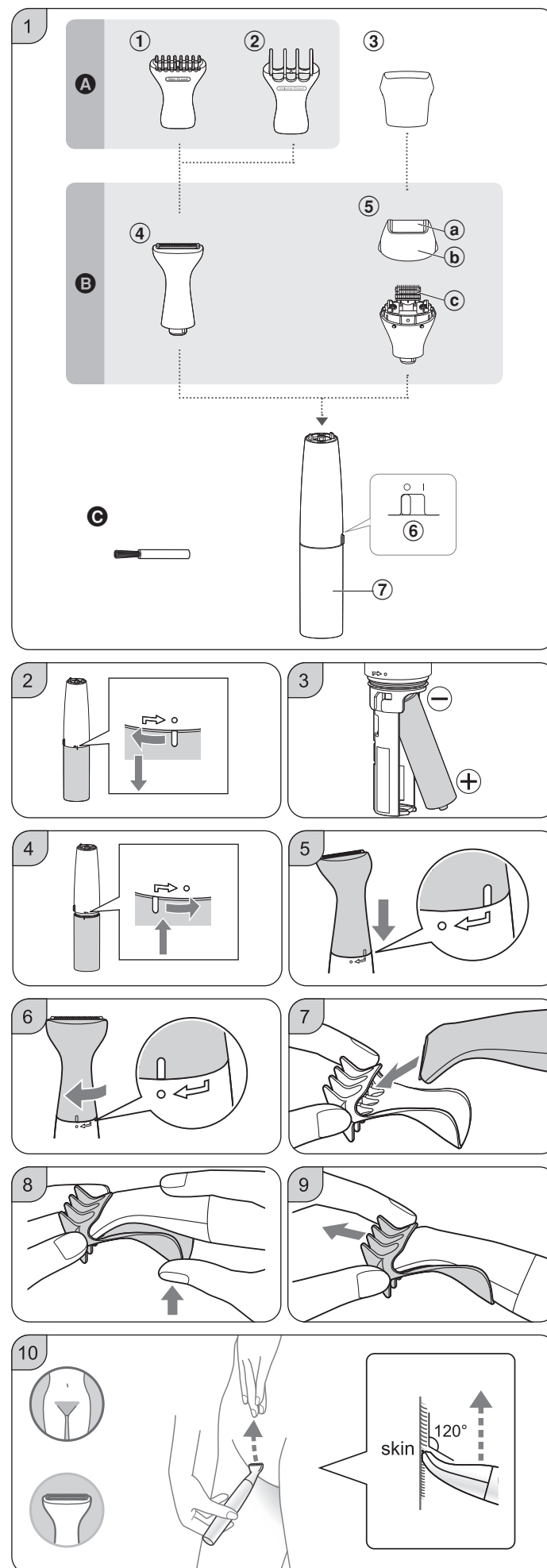
Proof of purchase in case of product theft or loss

Efficient Warranty Service

In case there is a problem with your product

Special Offers and Promotions from Panasonic

**FOR YOUR CONVENIENCE, WE HAVE ESTABLISHED
A TOLL-FREE (IN USA ONLY) NATIONAL ACCESSORY
PURCHASE HOT LINE AT 1-800-332-5368.**



Parts identification (Fig. 1)

A Attachment

- ① Bikini comb
- ② Skin guard
- ③ Shaver cap

B Head

- ④ Trimmer head
- ⑤ Shaver head
 - a Outer foil
 - b Outer foil frame
 - c Inner blade

⑥ Power switch [O / I]

- ⑦ Battery cover

Accessory

⑧ Cleaning brush

- A battery is not supplied. Please purchase it separately.

Installing the battery

- 1 Turn the battery cover in the direction of the arrow and remove it. (Fig. 2)
- 2 Check the polarities of the battery, and install it. (Fig. 3)
- 3 Attach the battery cover back on, aligning it with the mark on the main body, and turning it in the direction of the arrow. (Fig. 4)

Notes

- You can use the appliance for approximately 1 month with one Panasonic LR6 (AA alkaline battery). (When used for approx. 5 minutes at one time, twice a week in a room temperature of 20 °C [68 °F].)
- Thoroughly wipe the main body to prevent water droplets from getting inside when installing the battery.
- Use only LR6 (AA alkaline battery). Manganese batteries significantly degrade performance.

Installing the head

To attach the head to the main body, follow these steps: Locate the mark on the main body where the head should be attached.

Align the head with the mark on the main body. (Fig. 5)

Turn the head in the direction of the arrow marked on the main body until it clicks into place. (Fig. 6)

To remove the head, simply reverse the above steps.

- The illustration shows the trimmer head.

Installing the attachment

▶ Attaching

1. Insert the head into the attachment until the edge of blade stops. (Fig. 7)
2. While securing the attachment, push it into the head firmly with your fingers until it clicks. (Fig. 8)
 - Make sure that the attachment does not come off.

▶ Removing

Pull out the attachment. (Fig. 9)

- The illustration shows the bikini comb.

How to use

For best results, it is recommended to shave or trim the hair when it is dry. Wet hair can stick to the skin or tangle together, making it more difficult to achieve a uniform length.

- 1 Attach the head and attachment suitable for your purpose.
- 2 Turn the power switch to "I".
- 3 Turn the power switch to "O" after use.
 - Clean the appliance after use.

On your bikini area

To safely use the trimmer head on sensitive areas such as the crotch or buttocks, follow these guidelines:

- Always use the provided skin guard to avoid accidentally cutting or nicking the skin.
- When applying the appliance to areas that are hard to see, use a mirror to avoid damaging the skin.

Tips

- To get a better shave, stretch the skin with your free hand, apply the head or attachment to the skin firmly and move the appliance gently and slowly.
- If your hair lies flat on the skin, stroke the hair against the flow to make it stand while shaving.

Close shaving

▶ Bikini line (The front of the bikini area)

- 1 Trim the hair to 1.5 mm or less with the trimmer head. (Fig. 10)
 - Apply the trimmer head to the skin firmly and trim upwards using slow and gentle strokes.

▶ Crotch and buttocks

- 1 Attach the provided skin guard to the trimmer head, and trim the hair to 1.5 mm or less. (Fig. 12)
- 2 Shave completely with the shaver head. (Fig. 13)

Note

- An injury may result even with the skin guard attached.
 - Be careful not to allow the appliance to make contact with the prohibited area. (Fig. 0)
 - Do not press the appliance strongly against the soft area.
- If the hair is not trimmed short enough with the trimmer head, it may be difficult to get a close shave with the shaver head.

Trimming

▶ Only for bikini line

- 1 Set the provided bikini comb to the trimmer head and trim. (Fig. 14)

Replacing

Make sure the power switch is in the "O" position.

Removing and attaching the shaver head

- Remove the outer foil from the outer foil frame only when replacing it.

Removing the outer foil frame

Lift the outer foil frame upwards. (Fig. 15)

Attaching the outer foil frame

Attach the outer foil frame evenly until it clicks. (Fig. 16)

Removing the outer foil

Push both ends of the outer foil in. (Fig. 17)

Attaching the outer foil

Securely attach the outer foil until it clicks. (Fig. 18)

Removing the inner blade

Pull the inner blade straight out. (Fig. 19)

Attaching the inner blade

Securely attach the outer foil until it clicks. (Fig. 20)

Cleaning

- Clean the appliance after use, otherwise it might affect the cutting performance.
- Remove the attachment and the head when cleaning. Remove the outer foil frame when cleaning the shaver head.
- Be careful not to hit the main body on the sink or any other object while draining the water. Failure to do so may cause malfunction.
- Do not wipe with alcohol or nail polish remover. Doing so may cause malfunction, cracking of the parts or discoloration.

Wet cleaning (Fig. 21)

Clean the main body, the attachment and the head with running water.

▶ After wiping off water drops with a towel

Let them dry naturally. Remove the head to dry it quicker.

Brush cleaning (Fig. 22)

Clean the hair dust with the cleaning brush.

Storing

- Attach the attachment or the shaver cap to the head.