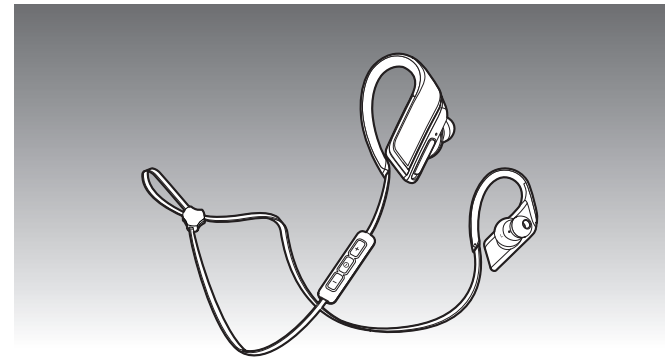


Panasonic®

Owner's Manual

Digital Wireless Stereo Earphones

Model No. **RP-BTS50**



If you have any questions, visit:

In the U.S.A.:

www.panasonic.com/support

In Canada:

www.panasonic.ca/english/support

Pour toute question, visitez :

www.panasonic.ca/french/support

For U.S.A. only /

Pour les É.-U. seulement

The warranty can be found on "Basic Owner's Manual".

Register online at

www.panasonic.com/register

(U.S. customers only)

For Canada only / Pour le Canada seulement

The warranty can be found on "Basic Owner's Manual".

La garantie se trouve dans le
« Manuel d'utilisation Fonctions de base ».

PP

SQW0571

Accessories

Please check and identify the supplied accessories.

Only for U.S.A.:

To order accessories, refer to “Limited Warranty” on “Basic Owner’s Manual”.

Only for Canada:

To order accessories, contact the dealer from whom you have made your purchase.

- 1 USB charging cord
- 1 Carrying case
- 1 Earpieces set (L, S)

(Important) About water resistance

- Specifications for this unit are equivalent of IPX5 of IEC 60529.

■ About the IPX5 (liquid ingress protection level against water jet)

This unit is compatible to operate after water jet from nozzles approximately 12.5 L/min (3.3 gallon/min) of room temperature tap water from every direction approximately 3 m (9.8 feet) from this unit for 3 minutes. Supplied USB charging cord is not water resistant.

Water resistance is not guaranteed under all conditions.

■ Cautions for using around water

Conform to following. Improper use may result in a malfunction.

- Securely close the USB lid.
- Do not open or close the USB lid with wet hands or when water droplets are on this unit. Doing so may cause malfunction such as terminal rusting with the water droplets.
- Do not connect and use a USB charging cord.
- Do not pour soap water or detergent, or immerse in water.
- Remove any hair, lint, sand, dust, etc., that may be attached to the rubber seal on the USB lid before closing.
- Leaving the device with water droplets in a cold region may result to malfunction such as the USB lid stuck closed.
- The sound may become smaller or distorted when water is accumulated in the earphones or microphone of this unit. Wipe this unit with dry soft cloth.
- When water enters inside this unit, stop using this unit, and contact the nearest Dealer or Service Center. Malfunction due to exposure to water by improper handling by the customer will not be covered by the warranty. Supplied USB charging cord is not water resistant.

Dear customer

Thank you for purchasing this product. Please read these instructions carefully before using this product, and save this manual for future use.

Table of contents

Before use

Accessories	2
(Important) About water resistance.....	2
Part names	3

Preparation

Charging	3
Turning the power on/off	3
Connecting a Bluetooth® device	4
How to wear the earphones.....	4

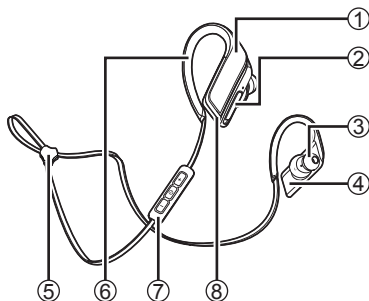
Operation

Listening to music.....	5
Making a phone call.....	5
Useful functions	6

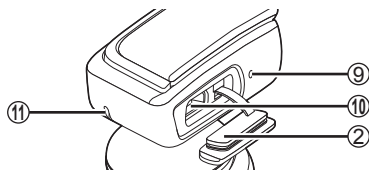
Other

Restoring to the factory settings	6
Maintenance	7
Copyright, etc.	7
About Bluetooth®	7
Safety precautions.....	8
Troubleshooting guide	9
Specifications	10
Useful information.....	10
To remove the battery when disposing of this unit.....	11

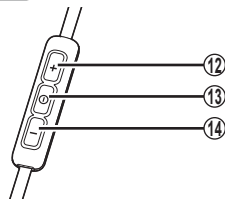
Part names



Right earphone



Remote controller



- ① Right earphone
- ② USB lid
- ③ Earpiece
- ④ Left earphone
- ⑤ Cord adjuster
- ⑥ Clip
- ⑦ Remote controller
- ⑧ LED illumination
- ⑨ LED indicator light*
 - The number of blinks or color notifies the status of the unit. (* hereafter referred to as "LED")
- ⑩ Charging terminal (DC IN)
 - Open the USB lid and connect the USB charging cord (supplied) to this terminal when charging. (See "Charging")
- ⑪ Microphone
- ⑫ Volume +/Next
- ⑬ Power/Pairing/Play/Pause/Call ①
- ⑭ Volume -/Previous

■ Note

- Excessive sound pressure from earphones and headphones can cause hearing loss.
- Listening at full volume for long periods may damage the user's ears.
- Do not use any other USB charging cords except the supplied one.
- When using the unit, do not cover the right housing with the palm of your hand. The Bluetooth® connection may be blocked.

The product illustrations may differ from the actual product.

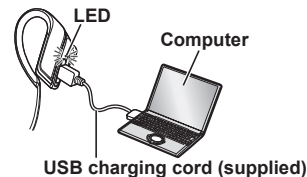
Charging

The rechargeable battery (installed in the unit) is not charged initially. Charge the battery before using the unit.

1 Connect this unit to a computer using the USB charging cord

- Within approximately 3 seconds after the connection is established, the LED on the right earphone will light in red.
- The LED lights in red when charging is in progress. When charging is completed, the LED will go out.
- Charging will take approximately 1.5 hours from empty state to fully charged. (Quick charging time for 70 minutes operation: Approx. 15 minutes)

Right earphone



■ Note

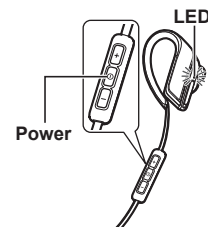
- The Bluetooth® feature cannot be used when this unit is connected to a computer using the USB charging cord.
- Charge in a room temperature between 10 °C and 35 °C (50 °F and 95 °F). Outside of this range of temperatures, charging may stop.
- The power cannot be turned on while charging.
- If PC used for charging enters "sleep mode", charging may not take place.
- Do not use any other USB charging cords except the supplied one.

Caution: Use only the supplied USB charging cord when connecting to a computer.

Turning the power on/off

1 Press and hold ① for approximately 3 seconds

- A beep will sound and the LED on the right earphone will blink.



To turn the power off

- Press and hold ① for approximately 3 seconds. A beep will sound and the power will be turned off.

■ Note

- When the unit is not operated for approximately 5 minutes, the power will automatically turn off. (See "Auto power off" (→ P. 6))

Connecting a Bluetooth® device

To establish a wireless connection, register the unit with Bluetooth® compatible devices.

Preparation on the Bluetooth® device

- Turn on the power, and enable the Bluetooth® feature.
- Place the device within 1 m (3.3 feet) from the unit.
- Check the device operation in its operation instructions, as required.

Power on for the first time

1 Turn on the unit

- The unit will start searching for the Bluetooth® device to connect to, and the LED on the right earphone will blink in blue and red alternately. (Only one operation after purchase)

2 When the unit (“RP-BTS50”) is detected by the Bluetooth® device, select it

- The MAC address (e.g., 6C:5A:B5:B3:1D:0F) may be displayed before the device name is displayed.
- If prompted for a passkey, input “0000 (four zeros)”.
- If the Bluetooth® profile selection screen appears, select the “A2DP” profile. If “A2DP” is not supported or if you want to just use phone calls, select the “HSP” or “HFP” profile. (For details on profiles, see “Listening to music” and “Making a phone call” (→ P. 5))

3 Check the connection with the Bluetooth® device on the unit

- First the LED on the right earphone lights in blue and repeats on and off. When the connection is established, blinking pattern will change.

Connection after the second time

<Connect the same Bluetooth® device>

When the unit is turned on, it will search for the previously setup Bluetooth® device and automatically start connecting to it. First the LED on the right earphone lights in blue and repeats on and off. When the connection is established, blinking pattern will change.

<Connect a different Bluetooth® device>

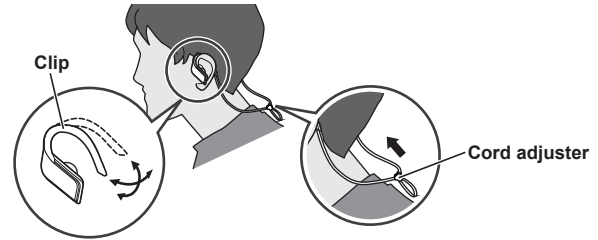
Disable the Bluetooth® feature on the previously connected device. Check that the unit is turned off. Press and hold **⏻** for approximately 5 seconds. A beep will sound. The unit will start searching for other Bluetooth® device. The LED on the right earphone will blink in blue and red alternately. Continue steps **2** and **3**.

■ Note

- If connection to a device is not established within approximately 5 minutes, the unit will be turned off. Start from step **1** again.
- 2 or more Bluetooth® devices cannot be connected to the unit at the same time.
- You can pair up to 8 devices with this unit. If a 9th device is paired, the device with the oldest connection will be replaced. To use it, pair it again.

How to wear the earphones

Check the sides (L and R), then wear the earphones from behind your neck and hook over both ears, and bend the clip to adjust. Move the cord adjuster towards the back of your head.



Adjusting the clips for your ears

Follow the steps below for the first time to ensure the most comfortable and secure fit.

1 Expand the clip by bending the clip away from the earphone



2 Place the earphone on your ear



3 Bend the clip around your ear



4 Adjust another earphone

■ Note

- M-size earpieces are attached at the time of purchase. If they are not the right size, replace them with S or L-size earpieces (supplied).

■ Attention

- Do not bend the clip more than necessary. The clip can not be adjusted if it is damaged.

Listening to music

If the Bluetooth® compatible device supports the “A2DP” and “AVRCP” Bluetooth® profiles, music can be played back with remote control operations on the unit.

- **A2DP** (Advanced Audio Distribution Profile): Transmits audio to the unit.
- **AVRCP** (Audio/Video Remote Control Profile): Allows remote control of the device using the unit.

1 Connect the Bluetooth® device and the unit (→ P. 4)

2 Select and play the music on the Bluetooth® device

- The selected music is output to the earphones of the unit.

Operating time of battery

Battery type	Operating time
Rechargeable battery (installed in the unit)	Approx. 6 hours

Operating time may be less depending on the operating conditions.

■ Attention

- The unit might leak sound depending on the volume level.
- When the volume is increased to near maximum level, music may sound distorted. Decrease the volume until the distortion is cleared.

Remote controlling

You can control the Bluetooth® device using the unit.

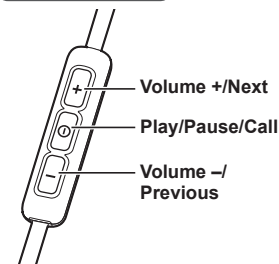
- Depending on Bluetooth® devices, some functions below do not work, or work differently via operation of the unit.

(Operation example)

Play/Pause/Call		
①	Press	Play/Pause/Call
	Press twice quickly	Reject the incoming call/ Switch the calling device

Previous/Next/Volume		
+	Press	Increase the volume
	Press and hold	Forward to the start of next track
-	Press	Decrease the volume
	Press and hold	Return to the start of current track

Remote controller



■ Note

- The volume can be adjusted in 15 levels. When the maximum or minimum volume is reached, a beep will sound.

Making a phone call

With Bluetooth® enabled phones (cell phones or smartphones) that support the “HSP” or “HFP” Bluetooth® profile, you can use the unit for phone calls.

- **HSP** (Headset Profile): This profile can be used to receive monaural sounds and establish two-way communication using the microphone on the unit.
- **HFP** (Hands-Free Profile): In addition to the HSP functions, this profile has the incoming and outgoing calls function.

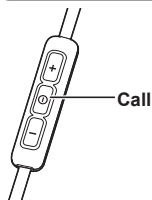
1 Connect the Bluetooth® enabled phone and unit (→ P. 4)

2 When answering an incoming call

Press **⓪** on the unit and answer the call

- During an incoming call, ringtone will sound from the earphones and the LED will blink.
- (HFP only) To reject the incoming call, press **⓪** twice quickly until the ringtone stops.

Remote controller



3 Start talking

- The LED will repeatedly blink 2 times during a call.
- The volume can be adjusted during a phone call. For setting instructions, see “Remote controlling”. (→ P. 5)

4 Press **⓪** to end the phone call

- A beep will sound.

■ Note

- There may be instances when hands free setting needs to be done on the Bluetooth® enabled phone.
- Depending on the Bluetooth® enabled phone, you may hear incoming and outgoing call ringtones of the phone from the unit.
- (HFP only) Press **⓪** twice quickly on the unit. The calling device will be switched between the Bluetooth® enabled phone and the unit.
- When the illumination lights are turned on, the LED indicator light will be turned off.

When making an outgoing call

Make an outgoing call on the Bluetooth® enabled phone

- Also refer to the operating manual for the Bluetooth® enabled phone.
- (Checking and operation steps on the unit are explained below)
- During an outgoing call, ringtone will sound from the earphones and the LED will blink.
 - To cancel the outgoing call, press **⓪**. A beep will sound.

Useful functions

LED illumination

The unit is equipped with the blue LED illumination lights on the right and left earphones. The LED illumination is off by factory default. It is set to off every time the unit is turned off.

To turn the lights on, press + and – simultaneously. To turn them off, press and hold + and – simultaneously for approximately 3 seconds.

- When the battery level is getting low, the illumination lights will be turned off.
- When the illumination lights are turned on, the LED indicator light will be turned off.
- When the LED illumination is turned on, operating time will be shorter.
- This unit must be paired to a device before this feature can be activated.

Resetting the unit

This unit can be reset when all operations are rejected. To reset the unit, connect the unit to a computer using the USB charging cord. All the previous operations will be canceled. (The pairing device information will not be deleted.)

Auto power off

If the unit is silent for approximately 5 minutes and operations for Bluetooth® devices are idle during that period, a beep will sound and the power will be automatically turned off.

LED indicator light

When the battery level is low during use of the unit, the blue blinking LED on the right earphone will change to red. A beep will sound every 1 minute. When the battery runs out, the power will turn off.

Restoring to the factory settings

When you want to delete all pairing device information, etc., you can restore the unit to the factory settings (original settings upon purchase). Charge the battery before restoring the unit.

1 Press and hold **⓪** for approximately 5 seconds

- Start searching for Bluetooth® devices to connect.

2 Press and hold + and – for 5 seconds or more simultaneously while searching

- The LED will blink fast in blue. The unit will restore to the factory settings.

Maintenance

Clean this unit with a dry and soft cloth.

- Do not use solvents including benzine, thinner, alcohol, kitchen detergent, a chemical wiper, etc. This might cause the exterior case to be deformed or the coating to come off.

Keeping the battery performance

- During the long period of disuse, full charge this unit once every 6 months to keep the battery performance.

Copyright, etc.

- The Bluetooth® word mark and logos are registered trademarks owned by Bluetooth SIG, Inc. and any use of such marks by Panasonic Corporation is under license. Other trademarks and trade names are those of their respective owners.
- Other system names and product names appearing in this document are in general the registered trademarks or trademarks of the respective developer companies. Note that the ™ mark and ® mark do not appear in this document.

The serial number of this product can be found on the right earphone. Remove the USB lid to see it.
Please note them in the space provided below and keep for future reference.
MODEL NUMBER **RP-BTS50** _____
SERIAL NUMBER _____

User memo:

DATE OF PURCHASE _____
DEALER NAME _____
DEALER ADDRESS _____
TELEPHONE NUMBER _____

About Bluetooth®

Panasonic bears no responsibility for data and/or information that is compromised during a wireless transmission.

■ Frequency band used

This unit uses the 2.4 GHz frequency band.

■ Certification of this unit

- This unit conforms to frequency restrictions and has received certification based on frequency laws. Thus, a wireless permit is not necessary.
- The actions below are punishable by law in some countries:
 - Taking apart/modifying the unit.
 - Removing specification indications.

■ Restrictions of use

- Wireless transmission and/or usage with all Bluetooth® equipped devices is not guaranteed.
- All devices must conform to standards set by Bluetooth SIG, Inc.
- Depending on the specifications and settings of a device, it can fail to connect or some operations can be different.
- This system supports Bluetooth® security features. But depending on the operating environment and/or settings, this security may not be sufficient. Transmit data wirelessly to this system with caution.
- This system cannot transmit data to a Bluetooth® device.

■ Range of use

Use this unit at a maximum range of 10 m (33 feet).

The range can decrease depending on the environment, obstacles or interference.

■ Interference from other devices

- This unit may not function properly and troubles such as noise and sound jumps may arise due to radio wave interference if this unit is located too close to other Bluetooth® devices or the devices that use the 2.4 GHz band.
- This unit may not function properly if radio waves from a nearby broadcasting station, etc. is too strong.

■ Intended usage

- This unit is for normal, general use only.
- Do not use this system near an equipment or in an environment that is sensitive to radio frequency interference (example: airports, hospitals, laboratories, etc.).

Safety precautions

■ Unit

- Avoid using or placing this unit near sources of heat.
- Do not use while operating a motorized vehicle. It may create a traffic hazard and is illegal in many areas.
- Do not listen with this unit at high volume in places where you need to hear sounds from the surrounding environment for safety, such as at railroad crossings, and construction sites.

■ Earpieces

- Keep the earpieces out of reach of children to prevent swallowing.

■ Allergies

- Discontinue use if you experience discomfort with the earphones or any other parts that directly contact your skin.
- Continued use may cause rashes or other allergic reactions.

THE FOLLOWING APPLIES ONLY IN THE U.S.A. AND CANADA.

This device complies with Part 15 of FCC Rules and Industry Canada's licence-exempt RSSs. Operation is subject to the following two conditions: (1) this device may not cause interference, and (2) this device must accept any interference, including interference that may cause undesired operation of this device.

FCC ID : ACJ-RP-BTS50
Model : RP-BTS50
IC : 216A-RPBTS50

This transmitter must not be co-located or operated in conjunction with any other antenna or transmitter.

This equipment complies with FCC/IC radiation exposure limits set forth for an uncontrolled environment and meets the FCC radio frequency (RF) Exposure Guidelines and RSS-102 of the IC radio frequency (RF) Exposure rules. This equipment has very low levels of RF energy that is deemed to comply without testing of specific absorption ratio (SAR).

THE FOLLOWING APPLIES ONLY IN THE U.S.A.

FCC Note:

This equipment has been tested and found to comply with the limits for a Class B digital device, pursuant to Part 15 of the FCC Rules.

These limits are designed to provide reasonable protection against harmful interference in a residential installation. This equipment generates, uses, and can radiate radio frequency energy and, if not installed and used in accordance with the instructions, may cause harmful interference to radio communications. However, there is no guarantee that interference will not occur in a particular installation. If this equipment does cause harmful interference to radio or television reception, which can be determined by turning the equipment off and on, the user is encouraged to try to correct the interference by one or more of the following measures:

- Reorient or relocate the receiving antenna.
- Increase the separation between the equipment and receiver.
- Connect the equipment into an outlet on a circuit different from that to which the receiver is connected.
- Consult the dealer or an experienced radio/TV technician for help.

Any unauthorized changes or modifications to this equipment would void the user's authority to operate this device.

This device complies with Part 15 of the FCC Rules. Operation is subject to the following two conditions: (1) This device may not cause harmful interference, and (2) this device must accept any interference received, including interference that may cause undesired operation.

Responsible Party: Panasonic Corporation of North America
Two Riverfront Plaza, Newark, NJ 07102-5490
Support Contact: <http://shop.panasonic.com/support>

FCC CAUTION

Any changes or modifications not expressly approved by the party responsible for compliance could void the user's authority to operate this equipment.

Operation is subject to the following two conditions:

(1) This device may not cause harmful interference, and (2) this device must accept any interference received, including interference that may cause undesired operation.

THE FOLLOWING APPLIES ONLY IN CANADA.

CAN ICES-3(B)/NMB-3(B)

Troubleshooting guide

Before requesting service, make the following checks. If you are in doubt about some of the check points, or if the remedies indicated in the chart do not solve the problem, refer to "Customer Services Directory" on "Basic Owner's Manual" if you reside in the U.S.A., or refer to "CONTACT INFORMATION" on "Basic Owner's Manual" if you reside in Canada.

General

The unit does not respond

- Connect the unit to a computer using the USB charging cord. The unit will be reset. (→ P. 6)

Power supply and charging

If you are having difficulty charging the unit

- Make sure the computer is turned on and is not on standby or sleep mode.
- Is the USB port you are currently using working properly? If your computer has other USB ports, unplug the connector from its current port and plug it into one of the other ports.
- If the steps mentioned above are not applicable, unplug the USB charging cord and plug it in again.
- If the charge time and operating time become shortened, the battery may have run down. (Number of charging times of the installed battery: Approximately 300.)

LED does not light during charging / Charging takes longer

- Is the USB charging cord (supplied) connected firmly to the USB terminal of the computer? (→ P. 3)
- Make sure to charge in a room temperature between 10 °C and 35 °C (50 °F and 95 °F).

The power does not turn on

- Is the unit being charged? The power cannot be turned on during charging. (→ P. 3)

Bluetooth® device connection

The device cannot be connected

- Delete the pairing information for this unit from the Bluetooth® device, then pair them again. (→ P. 4)

Sound and audio volume

No sound

- Make sure that the unit and the Bluetooth® device are connected correctly. (→ P. 4)
- Check if music is playing on the Bluetooth® device.
- Make sure that the unit is turned on and the volume is not set too low.
- Pair and connect the Bluetooth® device and the unit again. (→ P. 4)

Low volume

- Increase the volume of the unit. (→ P. 5)
- Increase the volume on the Bluetooth® device.

Sound from the device is cut off / Sound quality is bad

- Sound may be disrupted if signals are blocked. Do not fully cover this unit with the palm of your hand, etc.
- The device may be out of the 10 m (33 feet) communication range. Move the device closer to this unit.
- Remove any obstacle between this unit and the device.
- Switch off any wireless LAN device when not in use.
- A communication problem may arise if the battery is not fully charged. Charge the unit. (→ P. 3)

Phone calls

You cannot hear the other person

- Make sure that the unit and the Bluetooth® enabled phone are turned on.
- Check if the unit and the Bluetooth® enabled phone are connected. (→ P. 4)
- Check the audio settings of the Bluetooth® enabled phone. Switch the calling device to the unit if it is set to the Bluetooth® enabled phone. (→ P. 4)
- If the volume of the other person's voice is too low, increase the volume of both the unit and the Bluetooth® enabled phone.

Specifications

■ General

Power supply	(USB) DC 5 V, 500 mA (Internal battery: 3.7 V (Li-polymer 90 mAh))
Operating time*1 (SBC mode)	Approx. 6 hours
Charging time*2 (25 °C (77 °F))	Approx. 1.5 hours
Charging temperature range	10 °C to 35 °C (50 °F to 95 °F)
Operating temperature range	0 °C to 40 °C (32 °F to 104 °F)
Operating humidity range	35%RH to 80%RH (no condensation)
Mass (Weight)	Approx. 22 g (0.8 oz)
Water resistant	IPX5 equivalent

*1 It may be shorter depending on the operating conditions.

*2 Time taken to recharge from empty to full.

■ Bluetooth® section

Bluetooth® system specification	Ver. 4.1
Wireless equipment classification	Class 2 (2.5 mW)
Frequency band	2.4 GHz band FH-SS
Supported profiles	A2DP, AVRCP, HSP, HFP
Supported codec	SBC, AAC, aptX®
Operating distance	Up to 10 m (33 ft.)

■ Speaker section

Driver units	12 mm (1/2 in.)
--------------	-----------------

■ Terminal section

DC IN	(USB) DC 5 V, 500 mA
-------	----------------------

■ Microphone section

Type	Mono
------	------

■ Accessory section

USB charging cord	0.1 m (0.3 ft.)
-------------------	-----------------

● Specifications are subject to change without notice.

Useful information

(For Latin American Countries Only)

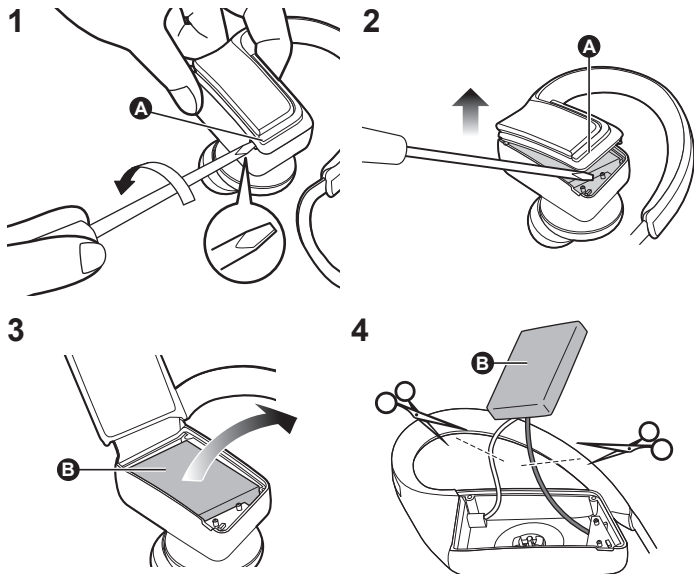
Customer Service

Customer Service Directory

Obtain products information and operative assistant; localize the closer distributor or Service Center; buy spare parts and accessories by our Web Site to Latin American:

COUNTRY	WEB SITE	CONTACT CENTER
Panama	www.panasonic.com/pa/soporte/	800-7262
Colombia	www.panasonic.com/co/soporte/	01-8000-947262
Ecuador	www.panasonic.com/ec/soporte/	1-800-726276
Costa Rica	www.panasonic.com/cr/soporte/	800-7262737
El Salvador	www.panasonic.com/sv/soporte/	800-7262
Guatemala	www.panasonic.com/gt/soporte/	1-801-811-7262
Uruguay	www.panasonic.com/uy/soporte/	0-800-7262
Paraguay	www.panasonic.com/uy/soporte/	0-800-11-7262
Chile	www.panasonic.com/cl/soporte/	800-390-602 022-797-5000
Peru	www.panasonic.com/pe/soporte/	0800-00726
Venezuela	www.panasonic.com/ve/soporte/	800-7262-800
Mexico	www.panasonic.com/mx/soporte/	01800-847-7262 55-5000-1200
Argentina	www.panasonic.com/ar/soporte/	0800-333-7262 0810-321-7262
Dominican Republic	www.panasonic.com/do/soporte/	809-200-8000

To remove the battery when disposing of this unit



The following instructions are not intended for repairing purposes but for the disposal of this unit. This unit is not restorable once disassembled. When disposing of this unit, take out the battery installed in this unit and recycle it.

Danger

As the rechargeable battery is specifically for this product, do not use it for any other device.

Do not charge the removed battery.

- Do not heat or expose to flame.
 - Do not leave the battery(ies) in a car exposed to direct sunlight for a long period of time with doors and windows closed.
 - Do not pierce the battery with a nail, subject it to an impact, or dismantle or modify it.
 - Do not let the wires touch any other metal or each other.
 - Do not carry or store the battery with a necklace, hair pin, or the like.
- Doing so may cause the battery to generate heat, ignite, or rupture.

Warning

Do not place the removed battery, and other items within reach of infants.

Accidental swallowing of such an item may have an adverse effect on the body.

- In the event that you think such an item has been swallowed, consult a doctor immediately.

In the event of fluid leaking from the battery, take the following measure, and do not touch the fluid with bare hands.

Fluid entering into an eye may cause loss of eyesight.

- Wash the eye with water immediately without rubbing it, and then consult a doctor.
- Fluid getting on your body or clothes may cause inflammation of the skin or injury.
- Sufficiently rinse with clean water, and then consult a doctor.

A lithium-ion polymer rechargeable battery is built in to the left earphone. Please discard according to local regulations.

When disposing this product, disassemble properly by following the procedure, and remove the internal rechargeable battery.

- Disassemble after the battery runs out.
- When disposing of the battery, please contact your local authorities or dealer and ask for the correct method of disposal.

1 Hold the top of the left earphone (L), and put a straight-slot screwdriver (commercially available) under the upper cover (A)

- Make sure to keep fingers away from the tip of the screwdriver.
- Select a screwdriver to be large enough for a space under the upper cover.

2 Use the screwdriver for leverage, and push the upper cover (A) upward

- Be careful not to touch the battery with the screwdriver.

3 Hold the battery (B), and remove it

4 Pull off the battery (B) and separate it from the left earphone by cutting off the wires, one by one, with scissors

- Insulate the wire parts of the removed battery with cellophane tape.
- Do not damage or dismantle the battery.



A lithium ion battery that is recyclable powers the product you have purchased. Please call 1-800-8-BATTERY for information on how to recycle this battery.

Panasonic Corporation of North America
Two Riverfront Plaza, Newark, NJ 07102-5490
<http://www.panasonic.com>

Panasonic Canada Inc.
5770 Ambler Drive, Mississauga, Ontario L4W 2T3
www.panasonic.com

© Panasonic Corporation 2016



SQW0571
M0216KZ0