

# Panasonic

Model No. **KX-PRL260/KX-PRD260**  
**KX-PRL262/KX-PRD262**

## Quick Guide

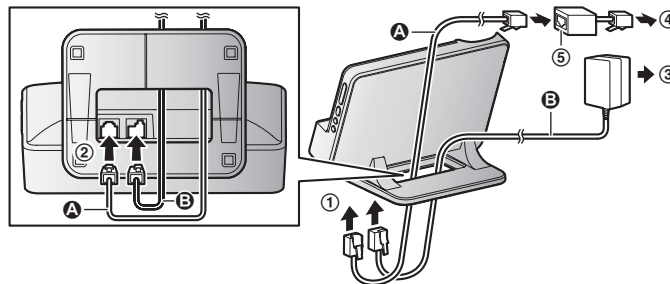
### Connections

#### Base unit

- ① Run the telephone line cord (A) and AC adaptor (B) through the slot of the stand.
- ② Connect the telephone line cord (A) and AC adaptor (B) to the jacks at the bottom of the unit until you hear a click.
- ③ Connect the AC adaptor to the power outlet.
- ④ Connect the telephone line cord to the single-line telephone jack (RJ11C) until you hear a click.
- ⑤ A DSL/ADSL filter (not supplied) is required if you have DSL/ADSL service.

#### Note:

- Use only the supplied Panasonic AC adaptor PNLV238.

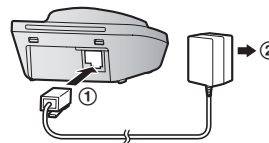


#### Charger

- ① Connect the AC adaptor plug to the charger until you hear a click.
- ② Connect the AC adaptor to the power outlet.

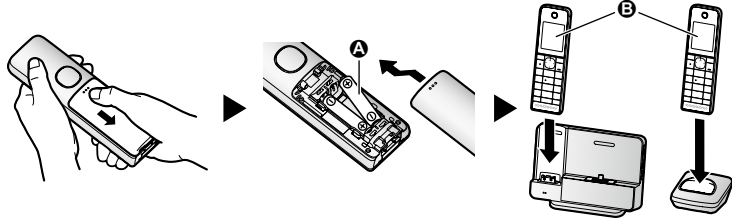
#### Note:

- Use only the supplied Panasonic AC adaptor PNLV238.



### Battery installation/Battery charging

**Charge for about 7 hours.**



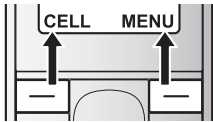
**Note:**

- USE ONLY rechargeable Ni-MH batteries AAA (R03) size (A).
- Do NOT use Alkaline/Manganese/Ni-Cd batteries.
- Confirm correct polarities (+, -).
- Follow the directions on the display to set up the unit.
- Confirm "Charging" is displayed (B).

### Operating tips

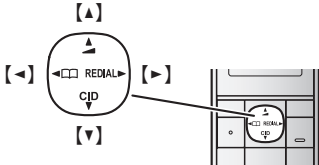
#### Soft keys

By pressing a soft key, you can select the feature shown directly above it on the display. Pay attention to the display to see what functions the soft keys are assigned during operation.



#### Navigator key

- [▲], [▼], [◀], or [▶]: Scroll through various lists and items.
- [Volume: ▲] or [Volume: ▼]: Adjust the receiver or speaker volume while talking.
- [◀] [☐]: View the phonebook entry.
- [▶] REDIAL: View the redial list.
- [▼] CID (Caller ID): View the caller list.



### Date and time (Handset)

- 1 **[MENU]** (right soft key) **[#101]**
- 2 Enter the current month, date, and year. → **[OK]**
- 3 Enter the current hour and minute (12-hour clock format).
- 4 **[AM/PM]**: Select **"AM"** or **"PM"**. → **[SAVE]** → **[OFF]**

### Recording your greeting message for the answering system for the landline (Handset)

If you use a pre-recorded greeting message, you do not need to record your own greeting message.

- 1 **[MENU]** (right soft key) **[#302]** → **[+]**: **"Yes"** → **[SELECT]**
- 2 After a beep sounds, hold the handset about 20 cm (8 inches) away and speak clearly into the microphone (2 minutes max.).
- 3 Press **[STOP]** to stop recording. → **[OFF]**

### Link to cell

You can connect your base unit and cellular phone using Bluetooth® wireless technology, so that you can make or answer cellular calls using your phone system. For more details, please visit our Web site: <http://www.panasonic.com/link2cell>



- A Cell line
- B Cell phone service providers

### Trademarks

- The Bluetooth® word mark and logos are registered trademarks owned by Bluetooth SIG, Inc., and any use of such marks by Panasonic Corporation is under license.
- All other trademarks identified herein are the property of their respective owners.

## Link to cell

### Pairing a Bluetooth cellular phone

**1 Handset:**

For CELL 1: **[MENU]** (right soft key) **# 6 2 4 1**

For CELL 2: **[MENU]** (right soft key) **# 6 2 4 2**

- After the corresponding CELL indicator on the base unit starts flashing, the rest of the procedure must be completed within 5 minutes.

**2 Your cellular phone:**

While the corresponding CELL indicator is flashing, follow the instructions of your cellular phone to enter the pairing mode.

- Depending on your cellular phone, it may ask you to enter the Bluetooth PIN (default: "0000"). If your cellular phone shows PassKey confirmation on its display, follow the directions to proceed.

**3 Handset:**

Wait until a long beep sounds.

- It may take more than 10 seconds to complete pairing.
- When the corresponding CELL indicator lights up, the cellular phone is connected to the base unit. You are ready to make cellular calls.

**4 [OFF]**



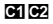
**Note:**

- Make sure that your cellular phone is set to connect to this product automatically. Refer to your cellular phone's operating instructions.

### Base unit: CELL indicators

| Status           | Meaning   |
|------------------|---|
| On               | A cellular phone is connected. Ready to make/receive cellular calls.  |
| Flashing         | <ul style="list-style-type: none"> <li>– The cellular line is in use.</li> <li>– Phonebook entries are being copied from a cellular phone.</li> <li>– The base unit is searching for the paired cellular phone.</li> <li>– The base unit is pairing a cellular phone.</li> <li>– A cellular call is put on hold.</li> </ul> |
| Flashing rapidly | A cellular call is being received.  |
| Light off        | <ul style="list-style-type: none"> <li>– A cellular phone is not paired to the base unit.</li> <li>– A cellular phone is not connected to the base unit.</li> </ul>   |

### Handset: Link to cell display items

|   |   |
|---|---|
|  | A cellular line is in use. <ul style="list-style-type: none"> <li>• When flashing: The cellular call is put on hold.</li> <li>• When flashing rapidly: A cellular call is being received.</li> </ul>  |
|  | A cellular phone is connected.* <sup>1</sup> Ready to make/receive cellular calls. <ul style="list-style-type: none"> <li>• When turned off: A cellular phone is not connected to the base unit.</li> </ul> * <sup>1</sup> Corresponding cellular line(s) is(are) indicated next to the item. |
|  | <ul style="list-style-type: none"> <li>– A cellular call is being done on that line.</li> <li>– The cellular line is selected for the setting.</li> </ul>   |

## Link to cell

### Connecting/disconnecting the cellular phone

#### Auto connection to the Bluetooth devices (cellular phones)

The unit connects to the Bluetooth devices at regular intervals if the connection is lost. To change the interval (default: "1 min"), see the operating instructions.

- When you are using a cellular line, the base unit loses its connection from other Bluetooth devices (cellular phone). To automatically resume the connection to cellular phones, leave the auto connection on.

#### Connecting/disconnecting the cellular phone manually

If you will not be using the paired cellular phone's link to cell feature temporarily (for example, you do not want the unit to ring when your cellular line receives a call), you can disconnect your cellular phone from the base unit. If you want to use it again, reconnect the cellular phone to the base unit.

- Even if a paired cellular phone was disconnected from the base unit, if it is brought within the base unit's range during the auto connection interval, it may automatically connect to the base unit.
- A disconnected cellular phone is not unpaired from the base unit, so pairing it to the base unit again is unnecessary.

#### Base unit:

##### To connect

Press [**⌘**] and wait for a few seconds for the cellular phone and base unit to connect to each other.

#### Handset:

##### 1 To connect/disconnect:

For CELL 1: [**MENU**] (right soft key) [**#**][**6**][**2**][**5**][**1**] (A long beep sounds.)

For CELL 2: [**MENU**] (right soft key) [**#**][**6**][**2**][**5**][**2**] (A long beep sounds.)

##### 2 [OFF]

### Cellular line only mode (If you do not use the landline) (Handset)

If you do not use the landline, set the cellular line only mode to use this unit more conveniently. If you turn on the "Cell line only mode", disconnect the telephone line cord from the base unit. Otherwise the "Cell line only mode" cannot be activated.

##### 1 [**MENU**] (right soft key) [**#**][**1**][**5**][**7**]

##### 2 To turn on:

[**↕**]: "On" → [**SELECT**] → [**↕**]: "Yes" → [**SELECT**]

To turn off:

[**↕**]: "Off" → [**SELECT**]

| <b>Basic operations</b>                              |   |
|--|---|
| <b>Making/Answering calls (Handset)</b>              |   |
| Making cellular calls                                | <b>1</b> Dial the phone number. → <b>[CELL]</b> <ul style="list-style-type: none"> <li>• When the cellular line only mode is set, you can also press <b>[↶]/[↷]</b> instead of <b>[CELL]</b>.</li> <li>• When only 1 cellular phone is paired, the unit starts dialing.</li> </ul> <b>2</b> When 2 cellular phones are paired:<br><b>[↕]</b> : Select the desired cellular phone. → <b>[SELECT]</b> |
| Making landline calls                                | Dial the phone number. → <b>[↶]/[↷]</b>   |
| Answering calls                                      | <b>[↶]/[↷]/[MR]</b>   |
| To hang up   | <b>[OFF]</b>  |
| To adjust the receiver/speaker volume                | Press <b>[▲]</b> or <b>[▼]</b> repeatedly while talking.  |
| Making a call using the redial list                  | <b>1</b> <b>[▶]</b> REDIAL → <b>[↕]</b> : Select the desired entry.<br><b>2</b> <b>To make a cellular call:</b><br>When only 1 cellular phone is paired: <b>[CELL]</b><br>or<br>When 2 cellular phones are paired:<br><b>[CELL]</b> → <b>[↕]</b> : Select the desired cellular phone. → <b>[SELECT]</b><br><b>To make a landline call:</b><br><b>[↶]</b>  |
| To adjust the ringer volume (cellular line/landline) | Press <b>[▲]</b> or <b>[▼]</b> repeatedly to select the desired volume while ringing.   |

| <b>Basic operations</b>                            |   |
|--|---|
| <b>Phonebook (Handset)</b>                         |   |
| Adding entries                                     | <ol style="list-style-type: none"> <li>1 [←] □ → [MENU]</li> <li>2 [↕]: "Add new entry" → [SELECT]</li> <li>3 [↕]: "(Name)" → [SELECT]</li> <li>4 Enter the party's name (16 characters max.). → [OK]</li> <li>5 [↕]: Select the desired phone number location. → [SELECT]</li> <li>6 Enter the party's phone number (24 digits max.). → [OK]</li> <li>7 [↕]: Select the desired label. → [SELECT] <ul style="list-style-type: none"> <li>• To store 2 or 3 phone numbers, repeat steps 5-7.</li> </ul> </li> <li>8 [↕]: Select the current setting of the group (default: "Home"). → [SELECT]</li> <li>9 [↕]: Select the desired group. → [SELECT]</li> <li>10 [↕]: "&lt;Save&gt;" → [SELECT] → [OFF]</li> </ol> |
| Making calls                                       | <ol style="list-style-type: none"> <li>1 [←] □ → [↕]: Select the desired entry.</li> <li>2 <b>To make a cellular call:</b><br/>                     When only 1 cellular phone is paired: [CELL] → [↕]: Select the desired phone number. → [CALL]<br/>                     or<br/>                     When 2 cellular phones are paired:<br/>                     [CELL] → [↕]: Select the desired phone number. → [CALL] → [↕]: Select the desired cellular phone. → [SELECT]                 </li> <li><b>To make a landline call:</b><br/>                     [↶] → [↕]: Select the desired phone number. → [↶]                 </li> </ol>  |
| <b>Answering system for the landline (Handset)</b> |   |
| Listening to messages                              | <p><b>To listen to new messages:</b><br/>                     [MENU] (right soft key) #3]2]3</p> <p><b>To listen to all messages:</b><br/>                     [MENU] (right soft key) #3]2]4</p>   |

## Using Bluetooth devices

### Copying phonebook entries from a Bluetooth cellular phone (phonebook transfer)

You can copy phonebook entries from the paired cellular phones or other cellular phones (not paired) to the unit's phonebook.

**1 Handset: [MENU]** (right soft key) **[#][6][1][8]**

**2 Handset:**

**To copy from paired cellular phones:**

**[↑]:** Select the desired cellular phone. → **[SELECT]**

- Copied items are stored to the group ("Cell 1" or "Cell 2") which the cellular phone is paired to.

**To copy from other cellular phones (not paired):**

**[↑]:** "Other cell" → **[SELECT]** → **[↑]:** Select the group you want to copy to. → **[SELECT]**

**3 When "Use the cell to transfer phone book" is displayed:** Go to step 4.

**When "Select mode" menu is displayed:**

**[↑]:** Select "Auto" or "Manual". → **[SELECT]**

"Auto": Download all entries from the cellular phone automatically. Go to step 5.

"Manual": Copy entries you selected.

- "Select mode" menu is displayed only when the cellular phone supports PBAP (Phone Book Access Profile) for Bluetooth connection.

**4 Cellular phone:**

Follow the instructions of your cellular phone to copy phonebook entries.

- For other cellular phones (not paired), you need to search for and select the base unit. The Bluetooth PIN (default: "0000") may be required. If your cellular phone shows PassKey confirmation on its display, follow the directions to proceed.
- The entries being copied are displayed on the handset.

**5 Handset:**

Wait until "Completed" is displayed. → **[OFF]**



## Using Bluetooth devices

### Playing music from a Bluetooth device

This feature allows you to:

- use a Bluetooth device to play music through the base unit's speaker.
- use the handset as a remote control when playing music from a Bluetooth device through the base unit's speaker.

#### Playing music through the base unit's speaker

##### 1 Bluetooth device:

Use your Bluetooth device's media player app to play music.

- The music is played through the base unit's speaker.

##### 2 Base unit:

Adjust the speaker volume by pressing **[+]** or **[-]**.

#### Using the handset as a remote control

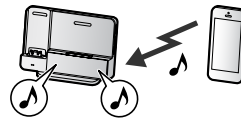
##### Important:


- Confirm in advance that your Bluetooth device's media player app is running.

##### 1 **[MENU]** (right soft key) → → **[SELECT]**

- The music is played through the base unit's speaker.

##### 2 Press **[▲]** or **[▼]** to adjust the base unit's speaker volume.



| Frequently asked questions  |   |
|---|---|
| Question  | Cause/solution  |
| Why is  displayed? | <ul style="list-style-type: none"> <li>• The handset is too far from the base unit. Move closer.</li> <li>• The base unit's AC adaptor is not properly connected. Reconnect AC adaptor to the base unit.</li> <li>• The handset is not registered to the base unit. Register it.               <ol style="list-style-type: none"> <li><b>1 Handset:</b> <b>[MENU]</b> (right soft key) <b>[#][1][3][0]</b></li> <li><b>2 Base unit:</b> Press and hold <b>[*]</b> for about 5 seconds.</li> <li><b>3 Handset:</b> Press <b>[OK]</b>, then wait until a long beep sounds.</li> </ol> </li> </ul> |
| Why am I unable to pair a cellular phone to the base unit?  | <ul style="list-style-type: none"> <li>• Depending on the compatibility of the cellular phone, you may not be able to pair it to the base unit. For more information, please visit <a href="http://www.panasonic.com/link2cell">http://www.panasonic.com/link2cell</a></li> <li>• Confirm that the Bluetooth feature of your cellular phone is turned on. You may need to turn this feature on depending on your cellular phone.</li> </ul>   |
| How can I increase the handset volume level?  | <ul style="list-style-type: none"> <li>• Press the navigator key <b>[▲]</b> repeatedly while talking.</li> </ul>  |
| Why is the conversation noisy or cutting off?   | <ul style="list-style-type: none"> <li>• Try to relocate the base unit so that distance to the handset is minimized.</li> <li>• If the same problem occurs even if the handset is next to the base unit, please visit: <a href="http://www.panasonic.com/support">http://www.panasonic.com/support</a></li> </ul>   |
| Can I add another accessory handset to my base unit?  | <ul style="list-style-type: none"> <li>• Yes, you can add up to 6 handsets (including the handset(s) sold with your base unit) to a single base unit.</li> <li>• To purchase additional accessory handset(s) (KX-PRLA20), please visit: <a href="http://www.pstc.panasonic.com">http://www.pstc.panasonic.com</a></li> </ul> <p>TTY users (hearing or speech impaired users) can call 1-866-605-1277.</p>   |
| Can I keep the batteries charging all the time?   | <ul style="list-style-type: none"> <li>• You can leave the handset on the base unit or charger anytime. This will not harm the batteries.</li> </ul>  |
| How can I answer a call waiting call (2nd call)?  | <ul style="list-style-type: none"> <li>• Press <b>[CALL WAIT]</b> when you hear the call waiting tone.</li> </ul>   |