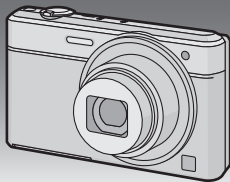


Panasonic®

Basic Owner's Manual Digital Camera

Model No. **DMC-SZ9**

LUMIX



Please read these instructions carefully before using this product, and save this manual for future use.



More detailed instructions on the operation of this camera are contained in "Owner's Manual for advanced features (PDF format)" in the supplied CD-ROM. Install it on your PC to read it.



Register online at www.panasonic.com/register (U.S. customers only)

For USA and Puerto Rico assistance, please call: 1-800-211-PANA(7262) or, contact us via the web at: <http://www.panasonic.com/contactinfo>



VQT4P86
F1212SM0

Dear Customer,

Thank you for choosing Panasonic!

You have purchased one of the most sophisticated and reliable products on the market today. Used properly, we're sure it will bring you and your family years of enjoyment. Please take time to fill in the information on the below. The serial number is on the tag located on the underside of your camera. Be sure to **retain this manual** as your convenient camera information source.

Date of Purchase	Dealer Phone No.
Dealer Purchased From	Model No.
Dealer Address	Serial No.

Please note that the actual controls and components, menu items, etc. of your Digital Camera may look somewhat different from those shown in the illustrations in this Owner's Manual.

Carefully observe copyright laws.

- Recording of pre-recorded tapes or discs or other published or broadcast material for purposes other than your own private use may infringe copyright laws. Even for the purpose of private use, recording of certain material may be restricted.



A lithium ion battery that is recyclable powers the product you have purchased. Please call 1-800-8-BATTERY for information on how to recycle this battery.

-If you see this symbol-

Information on Disposal in other Countries outside the European Union

This symbol is only valid in the European Union.

If you wish to discard this product, please contact your local authorities or dealer and ask for the correct method of disposal.



Information for Your Safety

WARNING:

To reduce the risk of fire, electric shock or product damage,

- Do not expose this unit to rain, moisture, dripping or splashing.
- Use only the recommended accessories.
- Do not remove covers.
- Do not repair this unit by yourself. Refer servicing to qualified service personnel.

The socket outlet shall be installed near the equipment and shall be easily accessible.

■ Product identification marking

Product	Location
Digital Camera	Bottom

This transmitter must not be co-located or operated in conjunction with any other antenna or transmitter.

This equipment complies with FCC radiation exposure limits set forth for an uncontrolled environment and meets the FCC radio frequency (RF) Exposure Guidelines in Supplement C to OET65.

This equipment has very low levels of RF energy that are deemed to comply without testing of specific absorption ratio (SAR).

FCC Note:

This equipment has been tested and found to comply with the limits for a Class B digital device, pursuant to Part 15 of the FCC Rules. These limits are designed to provide reasonable protection against harmful interference in a residential installation. This equipment generates, uses, and can radiate radio frequency energy and, if not installed and used in accordance with the instructions, may cause harmful interference to radio communications. However, there is no guarantee that interference will not occur in a particular installation. If this equipment does cause harmful interference to radio or television reception, which can be determined by turning the equipment off and on, the user is encouraged to try to correct the interference by one or more of the following measures:

- Reorient or relocate the receiving antenna.
- Increase the separation between the equipment and receiver.
- Connect the equipment into an outlet on a circuit different from that to which the receiver is connected.
- Consult the dealer or an experienced radio/TV technician for help.

FCC Caution: To assure continued compliance, follow the attached installation instructions and use only shielded interface cables with ferrite core when connecting to computer or peripheral devices.

Any changes or modifications not expressly approved by the party responsible for compliance could void the user's authority to operate this equipment.

Declaration of Conformity

Trade Name: Panasonic
Model No.: DMC-SZ9
Responsible Party: Panasonic Corporation of North America
 One Panasonic Way, Secaucus, NJ 07094
Support Contact: Panasonic Consumer Marketing Company of North America
 1-800-211-PANA (7262)

This device complies with Part 15 of the FCC Rules. Operation is subject to the following two conditions: (1) This device may not cause harmful interference, and (2) this device must accept any interference received, including interference that may cause undesired operation.

Certification and Compliance

See Camera for the certification and compliance mark specific to that device.

- 1 Select **[Wi-Fi Setup]** in the **[Wi-Fi]** menu.
- 2 Press **▲/▼** to select **[Approved Regulations]**, and press **[MENU/SET]**.

Contains FCC ID: VPYLBVX532



■ About the battery pack

CAUTION

Battery pack (Lithium ion battery pack)

- Use the specified unit to recharge the battery pack.
- Do not use the battery pack with equipment other than the specified unit.
- Do not get dirt, sand, liquids, or other foreign matter on the terminals.
- Do not touch the plug terminals (+ and -) with metal objects.
- Do not disassemble, remodel, heat or throw into fire.

If any electrolyte should come into contact with your hands or clothes, wash it off thoroughly with water.

If any electrolyte should come into contact with your eyes, never rub the eyes. Rinse eyes thoroughly with water, and then consult a doctor.

CAUTION

- Danger of explosion if battery is incorrectly replaced. Replace only with the type recommended by the manufacturer.
- When disposing the batteries, please contact your local authorities or dealer and ask for the correct method of disposal.

- Do not heat or expose to flame.
- Do not leave the battery(ies) in a car exposed to direct sunlight for a long period of time with doors and windows closed.

Warning

Risk of fire, explosion and burns. Do not disassemble, heat above 60 °C (140 °F) or incinerate.

■ About the AC adaptor (supplied)

CAUTION!

To reduce the risk of fire, electric shock or product damage,

- **Do not install or place this unit in a bookcase, built-in cabinet or in another confined space. Ensure this unit is well ventilated.**

AC adaptor

This AC adaptor operates on AC between 110 V and 240 V.

But

- In the U.S.A. and Canada, the AC adaptor must be connected to a 120 V AC power supply only.
- When connecting to an AC supply outside of the U.S.A. or Canada, use a plug adaptor to suit the AC outlet configuration.

■ Cautions for Use

- Do not use any other USB connection cables except the supplied one or a genuine Panasonic USB connection cable (DMW-USBC1: optional).
- Always use a genuine Panasonic AV cable (DMW-AVC1: optional).
- Always use a genuine Panasonic HDMI micro cable (RP-CHEU15: optional).
Part number: RP-CHEU15 (1.5 m) (5 feet)

Keep this unit as far away as possible from electromagnetic equipment (such as microwave ovens, TVs, video games etc.).

- If you use this unit on top of or near a TV, the pictures and/or sound on this unit may be disrupted by electromagnetic wave radiation.
- Do not use this unit near cell phones because doing so may result in noise adversely affecting the pictures and/or sound.
- Recorded data may be damaged, or pictures may be distorted, by strong magnetic fields created by speakers or large motors.
- Electromagnetic wave radiation generated by microprocessors may adversely affect this unit, disturbing the pictures and/or sound.
- If this unit is adversely affected by electromagnetic equipment and stops functioning properly, turn this unit off and remove the battery or disconnect AC adaptor (supplied)/AC adaptor (DMW-AC5PP: optional). Then reinsert the battery or reconnect AC adaptor and turn this unit on.

Do not use this unit near radio transmitters or high-voltage lines.

- If you record near radio transmitters or high-voltage lines, the recorded pictures and/or sound may be adversely affected.

Contents

Information for Your Safety	3
Before Use	7
Standard Accessories.....	8
Names and Functions of Main Parts	9
Inserting and Removing the Card (optional)/the Battery	10
Charging the Battery.....	11
Sequence of operations	12
Remote Shooting	14
• Installing the smartphone/tablet app “Image App”	14
• Connecting to a smartphone/tablet.....	15
• Taking pictures via a smartphone/tablet (remote recording).....	17
• Playing back pictures in the camera	17
Reading the Owner’s Manual (PDF format)	18
Installing supplied software	19
Specifications	20
Digital Camera Accessory System	23
Digital Camera Accessory Order Form	24
Limited Warranty (ONLY FOR U.S.A. AND PUERTO RICO)	25

Before Use

■ Care of the camera

- Do not subject to strong vibration, shock, or pressure.
- This camera is not dust/splash/water proof.
Avoid using the camera in places with a lot of dust, water, sand, etc.

■ About Condensation (When the lens is fogged up)

- Condensation occurs when the ambient temperature or humidity changes. Be careful of condensation since it causes lens stains, fungus and camera malfunction.
- If condensation occurs, turn the camera off and leave it for about 2 hours. The fog will disappear naturally when the temperature of the camera becomes close to the ambient temperature.

Standard Accessories

Check that all the accessories are supplied before using the camera.
Product numbers correct as of January 2013. These may be subject to change.

- 1 Battery Pack
(Indicated as **battery pack** or **battery** in the text)

Charge the battery before use.

- 2 AC Adaptor
Can be used for charging and playback.

- 3 USB Connection Cable

- 4 CD-ROM

- Software
 - Owner's Manual for advanced features
- Install on your PC before use.

- 5 Hand Strap


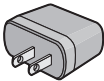
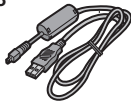


- SD Memory Card, SDHC Memory Card and SDXC Memory Card are indicated as **card** in the text.

- **The card is optional.**

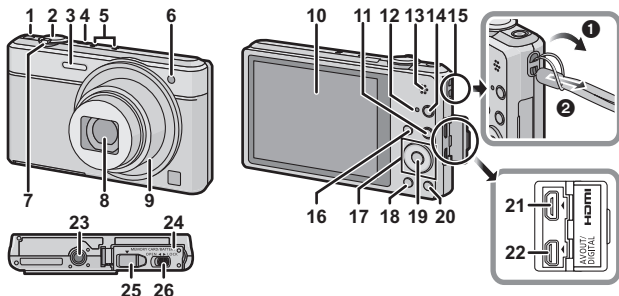
You can record or play back pictures on the built-in memory when you are not using a card.

- For information about optional accessories, refer to the "Digital Camera Accessory System".

- If any accessories are lost, customers should contact Panasonic's parts department at 1-800-833-9626 for further information about obtaining replacement parts.

<p>1</p>  <p>DMW-BCL7PP</p>	<p>2</p>  <p>VSK0768</p>
<p>3</p>  <p>K1HY08YY0032</p>	<p>4</p>  <p>VFF1138</p>
<p>5</p>  <p>VFC4297</p>	

Names and Functions of Main Parts



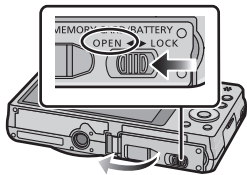
- | | | | |
|--|---|---|--|
| 1 | Motion picture button | 18 | [DISP.] button |
| 2 | Shutter button | 19 | [MENU/SET] button |
| 3 | Flash | 20 | [Q.MENU] button/
[/] (Delete/Cancel) button |
| 4 | Camera [ON/OFF] button | 21 | [HDMI] socket |
| 5 | Microphone | <ul style="list-style-type: none"> Do not connect with any cable other than an HDMI micro cable (RP-CHEU15: optional). Doing so may cause malfunction. | |
| 6 | Self-timer indicator
AF Assist Lamp | 22 | [AV OUT/DIGITAL] socket |
| 7 | Zoom lever | <ul style="list-style-type: none"> This socket is also used when charging the battery. | |
| 8 | Lens | 23 | Tripod mount |
| 9 | Lens barrel | <ul style="list-style-type: none"> A tripod with a screw length of 5.5 mm (0.22 inch) or more may damage this unit if attached. | |
| 10 | LCD monitor | 24 | Card/Battery door |
| 11 | [] (Playback) button | 25 | DC coupler cover |
| 12 | Charging lamp
Wi-Fi [®] connection lamp | <ul style="list-style-type: none"> When using an AC adaptor (DMW-AC5PP: optional), ensure that the Panasonic DC coupler (DMW-DCC13: optional) and AC adaptor are used. | |
| 13 | Speaker | <ul style="list-style-type: none"> Always use a genuine Panasonic AC adaptor (DMW-AC5PP: optional). | |
| <ul style="list-style-type: none"> Be careful not to cover the speaker with your finger. Doing so may make sound difficult to hear. | | 26 | Release lever |
| 14 | [Wi-Fi] button | | |
| 15 | Strap eyelet | | |
| <ul style="list-style-type: none"> Be sure to attach the strap when using the camera to ensure that you will not drop it. | | | |
| 16 | [MODE] button | | |
| 17 | Cursor buttons | | |

Inserting and Removing the Card (optional)/the Battery

- Check that this unit is turned off.
- We recommend using a Panasonic card.

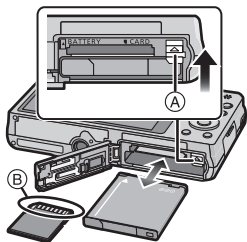
1 Slide the release lever in the direction of the arrow and open the card/battery door.

- Always use genuine Panasonic batteries (DMW-BCL7PP).
- If you use other batteries, we cannot guarantee the quality of this product.



2 Battery: Being careful about the battery orientation, securely insert it all the way in, and then check that it is locked by the lever (A).

To remove the battery, move the lever (A) in the direction of the arrow.



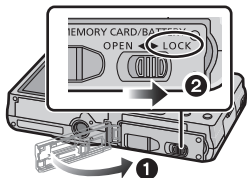
Card: Push it securely all the way until you hear a “click” while being careful about the direction in which you insert it.

To remove the card, push the card until it clicks, then pull the card out upright.

(B): Do not touch the connection terminals of the card.

3 ①: Close the card/battery door.

②: Slide the release lever in the direction of the arrow.



Note

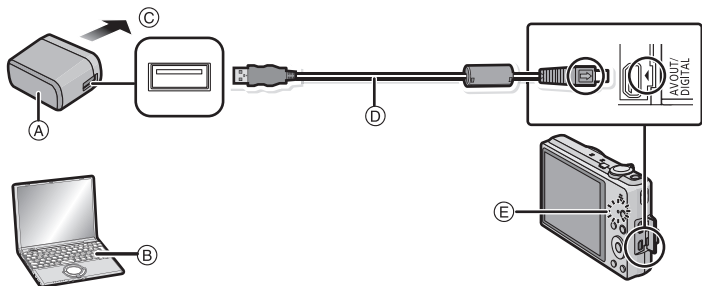
- Keep the Memory Card out of reach of children to prevent swallowing.

Charging the Battery

- The battery that can be used with this unit is DMW-BCL7PP.
- The battery is not charged when the camera is shipped. Charge the battery before use.
- Charge the battery with the AC adaptor (supplied) indoors [10 °C to 30 °C (50 °F to 86 °F)].

- Check that this unit is turned off.

Insert the battery to this unit, and then connect this unit to the AC adaptor (A) (supplied) or a PC (B).



© To power outlet

© USB connection cable (supplied)

■ About the charging lamp (E)

Lit red: Charging.

Off: Charging has completed. (**Charging time: Approx. 150 min**)

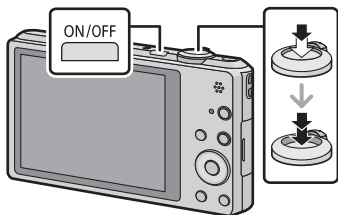
When using the AC adaptor (supplied), observe the following points as improper connections may cause malfunctions.

- Do not use any other USB connection cables except the supplied one or a genuine Panasonic USB connection cable (DMW-USBC1: optional).
- Do not use any other AC adaptors except the supplied one.
- Do not use the AC adaptor (supplied) or the USB connection cable (supplied) with other devices.

Sequence of operations

1 Press camera [ON/OFF] button.

- The clock is not set when the camera is shipped. Set the date and time before using the camera.



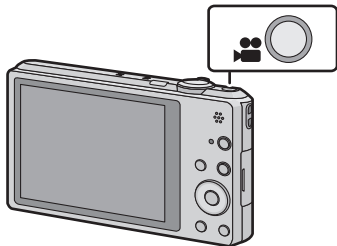
2 Press the shutter button halfway to focus and then press it fully to take the picture.

■ Recording Motion Pictures

1 Start recording by pressing the motion picture button.

2 Stop the recording by pressing the motion picture button again.

- Maximum time to record motion pictures continuously with [FHD/60i] in [AVCHD] is 29 minutes 59 seconds.
- Maximum time to record motion pictures continuously with [MP4] is 29 minutes 59 seconds or up to 4 GB.
You can check the recordable time on the screen. (For [FHD/30p] in [MP4] format, the file size is large and so the recordable time will drop below 29 minutes 59 seconds.)



■ Selecting the Recording Mode

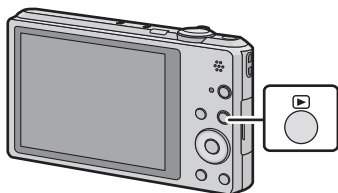
Press [MODE] to select the Recording Mode.

- TA**: Take pictures with automatic settings.
- 📷**: Take pictures with your own settings.
- 🌀**: Record while checking the image effect.
- 🖼️**: This mode allows you to take panorama pictures.
- SCN**: Take pictures according to scene.

■ Playing Back Pictures

Press [▶].

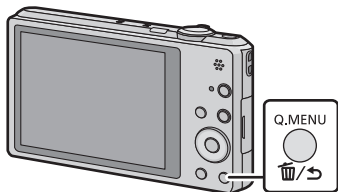
- Press ◀/▶ to select the picture.



■ Deleting Pictures

Select the picture, and then press [🗑️/↶].

- Confirmation screen is displayed. Picture is deleted by selecting [Yes].



■ Setting the Menu



Press [MENU/SET] to display the menu screen to change the recording function, camera settings, and other settings.

Remote Shooting

You can remotely operate the camera using a smartphone/tablet.
You need to install “Image App” on your smartphone/tablet.

Installing the smartphone/tablet app “Image App”

The “Image App” is an application provided by Panasonic that allows your smartphone/tablet to perform the following operations of a Wi-Fi-compatible LUMIX.

	For Android™ apps	For iOS apps
Version	1.1 or higher	
OS	Android 2.2~Android 4.2*	iOS 4.3~iOS 6.0
Installation procedure	<ol style="list-style-type: none">1 Connect your Android device to a network.2 Select “Google Play™ Store”.3 Enter “Image App” into the search box.4 Select “Image App” and install it. <p>• The icon will be added to the menu.</p> 	<ol style="list-style-type: none">1 Connect the iOS device to the network.2 Select “App StoreSM”.3 Enter “Image App” into the search box.4 Select “Image App” and install it. <p>• The icon will be added to the menu.</p> 

• The service may not be able to be used properly depending on the type of smartphone/tablet being used. For compatible devices, see the following support site.

<http://panasonic.jp/support/global/cs/dsc/> (This Site is English only.)

• When downloading the app on a mobile network, high packet communication fees may be incurred depending on the details of your contract.

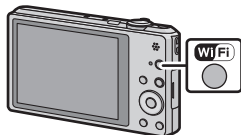
* Connecting to this unit with [Wi-Fi Direct] requires Android OS 4.0 or higher and Wi-Fi Direct™ support.

Connecting to a smartphone/tablet

Preparations:

- Install the “Image App” in advance. (P14)

1 Press [Wi-Fi].



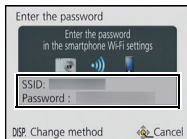
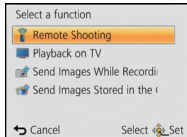
2 Press ▲/▼/◀/▶ to select [New Connection], and then press [MENU/SET].

- When connecting with the setting you used before, you can select the connection destination from [History Connection] or [Favorite Connection].



3 Press ▲/▼ to select [Remote Shooting], and then press [MENU/SET].

- The information (SSID and password) required for directly connecting your smartphone/tablet to this unit is displayed.
- To change the connection method, press [DISP.], and then select the connection method. For details, refer to “Changing the connection method”.



On your smartphone/tablet

(The default connection method is set to [Manual Connection].)

4 On the setting menu of your smartphone/tablet, turn on the Wi-Fi function.

5 Select the SSID that matches the one displayed on the screen of this unit, and then enter the password.

6 Start “Image App” on your smartphone/tablet. (P14)

- When the connection is complete, live images being captured by the camera are displayed on the smartphone/tablet.

■ Changing the connection method

- When connecting with [Via Network]

(On the camera)

- 1** Press ▲/▼ to select [Via Network], and then press [MENU/SET].
- 2** Select the method for connecting to a wireless access point, and set.

(On your smartphone/tablet)

- 3** On the setting menu of your smartphone/tablet, turn on the Wi-Fi function.
- 4** Select the wireless access point you want to connect to, and set.
- 5** Start “Image App” on your smartphone/tablet. (P14)

-
- When connecting with [Wi-Fi Direct] or [WPS Connection]

(On the camera)


- 1** Press ▲/▼ to select [Direct], and then press [MENU/SET].

Connection method	Description of settings
[Wi-Fi Direct]	<ol style="list-style-type: none">1 Set the device to Wi-Fi Direct™ mode.2 Press ▲/▼ to select [Wi-Fi Direct] and then press [MENU/SET].3 Press ▲/▼ to select the device to connect to, and then press [MENU/SET].<ul style="list-style-type: none">• Read the operating instructions of your device for details.
[WPS Connection]	[WPS (Push-Button)] <ol style="list-style-type: none">1 Press ▲/▼ to select [WPS (Push-Button)] and then press [MENU/SET].2 Set the device to WPS mode.<ul style="list-style-type: none">• You can wait longer for a connection by pressing the [DISP.] button on this unit.
	[WPS (PIN code)] <ol style="list-style-type: none">1 Press ▲/▼ to select [WPS (PIN code)] and then press [MENU/SET].2 Enter the PIN code of the device into this unit.

(On your smartphone/tablet)

- 2** Start “Image App” on your smartphone/tablet. (P14)


Taking pictures via a smartphone/tablet (remote recording)

Select [] on the smartphone/tablet.



- The recorded images are saved in the camera.
- Motion pictures cannot be recorded.
- Some settings are not available.
- The screen differs depending on the operating system.

Playing back pictures in the camera

Select [] on a smartphone/tablet.



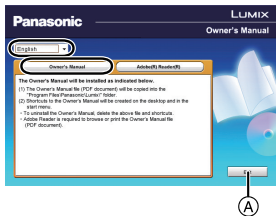
- You can save pictures on the smartphone/tablet.
- Motion pictures cannot be played back.
- You can send pictures to a WEB service, etc.
- The screen differs depending on the operating system.

Reading the Owner's Manual (PDF format)

More detailed instructions on the operation of this camera are contained in "Owner's Manual for advanced features (PDF format)" in the supplied CD-ROM. Install it on your PC to read it.

■ For Windows

- 1 Turn the PC on and insert the CD-ROM containing the Owner's Manual (supplied).
- 2 Click the [Owner's Manual].
- 3 Select the desired language and then click [Owner's Manual] to install.
(A) To return to the install menu.
- 4 Double-click the "Owner's Manual" shortcut icon on the desktop.



■ When the Owner's Manual (PDF format) will not open

You will need Adobe Acrobat Reader 5.0 or later, or Adobe Reader 7.0 or later to browse or print the Owner's Manual (PDF format).

- You can download and install a version of Adobe Reader that you can use with your OS from the following website.

<http://get.adobe.com/reader/otherversions/>

Installing supplied software

- The supplied CD-ROM includes the following software.
 - PHOTOfunSTUDIO 9.0 AE (Windows XP/Vista/7/8)
 - LoiLoScope 30 day full trial version (Windows XP/Vista/7/8)
(This will only install a shortcut to the trial version download site.)
- Before inserting the CD-ROM, close all running applications.

1 Check the environment of your PC.

- For details about information such as the operating environment or operating method, refer to the “Owner’s Manual for advanced features (PDF format)” or the operating instructions for the respective software programs.

2 Insert the CD-ROM with the supplied software.

- When you insert the supplied CD-ROM, the install menu will start.

3 Click on the [Applications] on the install menu.

4 Click on the [Recommended Installation].

- Proceed with installation according to messages appearing on the screen.



Note

- The software compatible with your PC will be installed.
- “PHOTOfunSTUDIO” and “LoiLoScope” are not compatible with Mac.

Specifications

Specifications are subject to change without notice.

Digital Camera:

Information for your safety

Power Source:	DC 5.1 V
Power Consumption:	1.3 W (When recording) 0.9 W (When playing back)

Camera effective pixels	16,100,000 pixels	
Image sensor	1/2.33" MOS sensor, total pixel number 17,500,000 pixels, Primary color filter	
Lens	Optical 10× zoom, f=4.5 mm to 45 mm (35 mm film camera equivalent: 25 mm to 250 mm)/F3.1 (Wide) to F5.9 (Tele)	
Image stabilizer	Optical method	
Focus range	Normal	50 cm (1.6 feet) (Wide)/1.5 m (4.9 feet) (Tele) to ∞ [9× is 2 m (6.6 feet) to ∞]
	Macro/ Intelligent auto/ Motion picture	5 cm (0.16 feet) (Wide)/1.5 m (4.9 feet) (Tele) to ∞ [9× is 2 m (6.6 feet) to ∞]
	Scene Mode	There may be differences in the above settings.
Shutter system	Electronic shutter+Mechanical shutter	
Minimum Illumination	Approx. 10 lx (when i-low light is used, the shutter speed is 1/30th of a second)	
Shutter speed	4 seconds to 1/1600th of a second [Starry Sky] Mode: 15 seconds, 30 seconds	
Exposure (AE)	Auto (Program AE)	
Metering mode	Multiple	
LCD monitor	3.0" TFT LCD (4:3) (Approx. 460,000 dots) (field of view ratio about 100%)	
Microphone	Stereo	
Speaker	Monaural	

Recording media	Built-in Memory (Approx. 60 MB)/SD Memory Card/ SDHC Memory Card/SDXC Memory Card
Recording file format	
Still Picture	JPEG (based on "Design rule for Camera File system", based on "Exif 2.3" standard)/DPOF corresponding/MPO
Motion pictures	AVCHD/MP4
Audio compression format	AVCHD: Dolby Digital (2ch) MP4: AAC (2ch)
Interface	
Digital	"USB 2.0" (High Speed)
Analog video	NTSC
Audio	Audio line output (monaural)
Terminal	
[AV OUT/DIGITAL]	Dedicated jack (8 pin)
[HDMI]	MicroHDMI TypeD
Dimensions (excluding the projecting parts)	Approx. 96.5 mm (W)×56.8 mm (H)×21.2 mm (D) [3.8"(W)×2.23"(H)×0.83"(D)]
Mass (weight)	Approx. 134 g/0.29 lb (with card and battery) Approx. 119 g/0.26 lb (excluding card and battery)
Operating temperature	0 °C to 40 °C (32 °F to 104 °F)
Operating humidity	10%RH to 80%RH
Language select	[ENGLISH]/[ESPAÑOL]

Wireless transmitter

Compliance standard	IEEE 802.11b/g/n (standard wireless LAN protocol)
Frequency range used (central frequency)	2412 MHz to 2462 MHz (1 to 11ch)
Encryption method	Wi-Fi compliant WPA TM /WPA2 TM
Access method	Infrastructure mode

AC Adaptor (Panasonic VSK0768):

Information for your safety

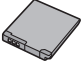

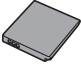



Input:	~ 110 V to 240 V, 50/60 Hz, 0.2 A
Output:	=== 5 V, 800 mA

Battery Pack (lithium-ion) (Panasonic DMW-BCL7PP):

Information for your safety

Voltage/capacity:	3.6 V/690 mAh
--------------------------	---------------

Digital Camera Accessory System

Accessory#	Illustration	Description
DMW-BCL7		Battery Pack
DMW-AC5		AC Adaptor *
DMW-DCC13		DC Coupler *
DMW-USBC1		USB Connection Cable
DMW-AVC1		AV Cable
RP-CHEU15		HDMI micro Cable

Product numbers correct as of January 2013. These may be subject to change.

- * The AC Adaptor (optional) can only be used with the designated Panasonic DC Coupler (optional). The AC adaptor (optional) cannot be used by itself.
- NOTE: Accessories and/or model numbers may vary between countries. Consult your local dealer.

Digital Camera Accessory Order Form

Please photocopy this form when placing an order.

1. Digital Camera Model # _____

2. Items Ordered

Accessory #	Description	Price Each	Quantity	Total Price
Shipping & Handling				\$6.95
Subtotal				
Your State & Local Sales Tax				
Total				

3. Method of payment (check one)

- American Express
 VISA Credit Card # _____
 MasterCard Expiration Date _____
 Discover Customer Signature _____

(Please do not send cash)

4. Shipping information (UPS delivery requires complete street address)

Ship To:

Mr.

Mrs.

Ms. _____

First

Last

Phone#:

Day () _____

Street Address

Night () _____

City

State

Zip

TO OBTAIN ANY OF OUR DIGITAL CAMERA ACCESSORIES YOU CAN DO ANY OF THE FOLLOWING:

VISIT YOUR LOCAL PANASONIC DEALER

OR

CALL PANASONIC'S ACCESSORY ORDER LINE AT 1-800-332-5368

[6 AM-6 PM M-F, PACIFIC TIME]

OR

MAIL THIS ORDER TO: PANASONIC NATIONAL PARTS CENTER

20421 84th Ave S., Kent, WA 98032

Limited Warranty

(ONLY FOR U.S.A. AND PUERTO RICO)

**Panasonic Consumer Marketing Company of North America,
Division of Panasonic Corporation of North America**
One Panasonic Way, Secaucus, New Jersey 07094

Panasonic Products Limited Warranty

Limited Warranty Coverage (For USA and Puerto Rico Only)

If your product does not work properly because of a defect in materials or workmanship, Panasonic Consumer Marketing Company of North America (referred to as “the warrantor”) will, for the length of the period indicated on the chart below, which starts with the date of original purchase (“warranty period”), at its option either (a) repair your product with new or refurbished parts, (b) replace it with a new or a refurbished equivalent value product, or (c) refund your purchase price. The decision to repair, replace or refund will be made by the warrantor.

Product or Part Name	Parts	Labor
Digital Camera	1 Year	1 Year
All included Accessories (Except Non-Rechargeable Batteries)	90 Days	Not Applicable
Only Non-Rechargeable Batteries	10 Days	Not Applicable

During the “Labor” warranty period there will be no charge for labor. During the “Parts” warranty period, there will be no charge for parts. This Limited Warranty excludes both parts and labor for non-rechargeable batteries, antennas, and cosmetic parts (cabinet). This warranty only applies to products purchased and serviced in the United States or Puerto Rico. This warranty is extended only to the original purchaser of a new product which was not sold “as is”.

Mail-In Service

For assistance in the U.S.A. and Puerto Rico in obtaining repairs, please ship the product prepaid to:

Panasonic Exchange Center
4900 George McVay Drive
Suite B
McAllen, TX 78503
panacare@us.panasonic.com

Online Repair Request

To submit a new repair request and for quick repair status visit our Web Site at www.panasonic.com/repair.

When shipping the unit, carefully pack, include all supplied accessories listed in the Owner's Manual, and send it prepaid, adequately insured and packed well in a carton box. When shipping Lithium Ion batteries please visit our Web Site at www.panasonic.com/BatteryHandling as Panasonic is committed to providing the most up to date information. Include a letter detailing the complaint, a return address and provide a daytime phone number where you can be reached. A valid registered receipt is required under the Limited Warranty.

IF REPAIR IS NEEDED DURING THE WARRANTY PERIOD, THE PURCHASER WILL BE REQUIRED TO FURNISH A SALES RECEIPT/PROOF OF PURCHASE INDICATING DATE OF PURCHASE, AMOUNT PAID AND PLACE OF PURCHASE. CUSTOMER WILL BE CHARGED FOR THE REPAIR OF ANY UNIT RECEIVED WITHOUT SUCH PROOF OF PURCHASE.

Limited Warranty Limits And Exclusions

This warranty ONLY COVERS failures due to defects in materials or workmanship, and DOES NOT COVER normal wear and tear or cosmetic damage. The warranty ALSO DOES NOT COVER damages which occurred in shipment, or failures which are caused by products not supplied by the warrantor, or failures which result from accidents, misuse, abuse, neglect, mishandling, misapplication, alteration, faulty installation, set-up adjustments, misadjustment of consumer controls, improper maintenance, power line surge, lightning damage, modification, introduction of sand, humidity or liquids, commercial use such as hotel, office, restaurant, or other business or rental use of the product, or service by anyone other than a Factory Service Center or other Authorized Servicer, or damage that is attributable to acts of God.

THERE ARE NO EXPRESS WARRANTIES EXCEPT AS LISTED UNDER "LIMITED WARRANTY COVERAGE".

THE WARRANTOR IS NOT LIABLE FOR INCIDENTAL OR CONSEQUENTIAL DAMAGES RESULTING FROM THE USE OF THIS PRODUCT, OR ARISING OUT OF ANY BREACH OF THIS WARRANTY.

(As examples, this excludes damages for lost time, travel to and from the servicer, loss of or damage to media or images, data or other memory or recorded content. The items listed are not exclusive, but for illustration only.)

ALL EXPRESS AND IMPLIED WARRANTIES, INCLUDING THE WARRANTY OF MERCHANTABILITY, ARE LIMITED TO THE PERIOD OF THE LIMITED WARRANTY.

Some states do not allow the exclusion or limitation of incidental or consequential damages, or limitations on how long an implied warranty lasts, so the exclusions may not apply to you.

This warranty gives you specific legal rights and you may also have other rights which vary from state to state. If a problem with this product develops during or after the warranty period, you may contact your dealer or Service Center. If the problem is not handled to your satisfaction, then write to the warrantor's Consumer Affairs Department at the addresses listed for the warrantor.

PARTS AND SERVICE, WHICH ARE NOT COVERED BY THIS LIMITED WARRANTY, ARE YOUR RESPONSIBILITY.

Customer Services Directory (United States and Puerto Rico)

Obtain Product Information and Operating Assistance; locate your nearest Dealer or Service Center; purchase Parts and Accessories; or make Customer Service and Literature requests by visiting our Web Site at:

<http://www.panasonic.com/help>

or, contact us via the web at:

<http://www.panasonic.com/contactinfo>

You may also contact us directly at:

1-800-211-PANA (7262)

Monday-Friday 9am-9pm, Saturday-Sunday 10am-7pm EST

For hearing or speech impaired TTY users, TTY: 1-877-833-8855

Accessory Purchases (United States and Puerto Rico)

Purchase Parts, Accessories and Instruction Books online for all Panasonic Products by visiting our Web Site at:

<http://www.pstc.panasonic.com>

Or, send your request by E-mail to:

npcparts@us.panasonic.com

You may also contact us directly at:

1-800-332-5368 (Phone) 1-800-237-9080 (Fax Only)

(Monday-Friday 9am-9pm EST)

Panasonic National Parts Center

20421 84th Ave S., Kent, WA 98032

(We accept Visa, Master Card, Discover Card and American Express.)

For hearing or speech impaired TTY users, TTY: 1-866-605-1277

As of October 2012

This product incorporates the following software:

- (1) the software developed independently by or for Panasonic Corporation,
- (2) the software owned by third party and licensed to Panasonic Corporation and/or,
- (3) open sourced software including the software developed by the OpenSSL Project for use in the OpenSSL Toolkit (<http://www.openssl.org/>), and the software written by Eric Young (eay@cryptsoft.com).

For the software categorized as (1) and (2), please view the information by pressing [MENU/SET], displaying [Setup] → [Version Disp.], and then pressing [MENU/SET]. For the software categorized as (3), please refer to the applicable license terms in the following "Owner's Manual for advanced features (PDF format)".

- "AVCHD" and the "AVCHD" logo are trademarks of Panasonic Corporation and Sony Corporation.
- QuickTime and the QuickTime logo are trademarks or registered trademarks of Apple Inc., used under license therefrom.
- SDXC Logo is a trademark of SD-3C, LLC.
- Manufactured under license from Dolby Laboratories. Dolby and the double-D symbol are trademarks of Dolby Laboratories.
- HDMI, the HDMI Logo, and High-Definition Multimedia Interface are trademarks or registered trademarks of HDMI Licensing LLC in the United States and other countries.
- HDAVI Control™ is a trademark of Panasonic Corporation.
- Mac and Mac OS are trademarks of Apple Inc., registered in the U.S. and other countries.
- Windows and Windows Vista are either registered trademarks or trademarks of Microsoft Corporation in the United States and/or other countries.
- App Store is a service mark of Apple Inc.
- Android and Google Play are trademarks or registered trademarks of Google Inc.
- The Wi-Fi CERTIFIED Logo is a certification mark of the Wi-Fi Alliance.
- The Wi-Fi Protected Setup Mark is a mark of the Wi-Fi Alliance.
- "Wi-Fi", "Wi-Fi Protected Setup", "Wi-Fi Direct", "WPA" and "WPA2" are marks or registered marks of the Wi-Fi Alliance.
- DLNA, the DLNA Logo and DLNA CERTIFIED are trademarks, service marks, or certification marks of the Digital Living Network Alliance.
- This product uses "DynaFont" from DynaComware Corporation. DynaFont is a registered trademark of DynaComware Taiwan Inc.
- Other names of systems and products mentioned in these instructions are usually the registered trademarks or trademarks of the manufacturers who developed the system or product concerned.

AVCHD™



This product is licensed under the AVC patent portfolio license for the personal and non-commercial use of a consumer to (i) encode video in compliance with the AVC Standard ("AVC Video") and/or (ii) decode AVC Video that was encoded by a consumer engaged in a personal and non-commercial activity and/or was obtained from a video provider licensed to provide AVC Video. No license is granted or shall be implied for any other use. Additional information may be obtained from MPEG LA, LLC.

See <http://www.mpegla.com>.

Panasonic Consumer Marketing Company of North America,
Division of Panasonic Corporation of North America

One Panasonic Way, Secaucus, NJ 07094

© Panasonic Corporation 2013

Printed in China