

Wi-Fi® Connection Guide

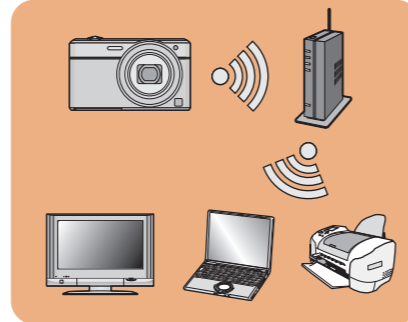
Let's connect to the Wi-Fi

- You can connect Wi-Fi® compatible devices to the camera wirelessly.
- You can connect them directly or via a wireless access point.

When connecting the camera to a smartphone/tablet directly



When connecting the camera to a TV or PC, etc. via a wireless access point




SEE REVERSE SIDE



Connecting the camera to a smartphone/tablet

1 Installing the smartphone/tablet app "Image App"

Operation on the smartphone/tablet

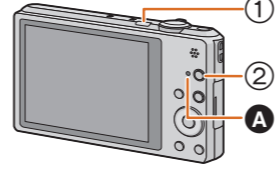

- Connect the smartphone/tablet to a network.
- Android™** Select "Google Play™ Store".
iOS Select "App StoreSM".
- Enter "Image App" into the search box.
- Select "Image App"  and install it.

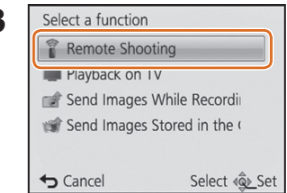
- Supported OS**
For Android apps: Android 2.2 ~ Android 4.2
For iOS apps: iOS 4.3 ~ iOS 6.0
- The service may not be able to be used properly depending on the type of smartphone/tablet being used. For compatible devices, see the following support site.
<http://panasonic.jp/support/global/cs/dsc/>
(This Site is English only.)
- When downloading the app on a mobile network, high packet communication fees may be incurred depending on the details of your contract.

- Android and Google Play are trademarks or registered trademarks of Google Inc.
- App Store is a service mark of Apple Inc.
- "Wi-Fi" and "Wi-Fi Protected Setup" are marks or registered marks of the Wi-Fi Alliance.
- DLNA, the DLNA Logo and DLNA CERTIFIED are trademarks, service marks, or certification marks of the Digital Living Network Alliance.

2 Connecting the camera to the smartphone/tablet (Remote Shooting)

Operation on the camera

- 
 - Press camera [ON/OFF] button.
 - Press [Wi-Fi].
- 

Select [New Connection].
- 

Select [Remote Shooting].

- 1 Press camera [ON/OFF] button.
2 Press [Wi-Fi].

Make sure the Wi-Fi connection lamp **A** is lit blue.

- Lit blue: The Wi-Fi connection is on standby
- Blinking blue: Sending/receiving data through the Wi-Fi connection

Select [New Connection].

You can select the setting you used before from [History Connection]. Please refer to "Owner's Manual for advanced features" (PDF) for details.

Select [Remote Shooting].

To change the connection method, press [DISP.]. (Such as [WPS Connection], [Via Network], etc.) Please refer to "Owner's Manual for advanced features" (PDF) for details.

- SSID refers to the name that is used to identify a network over a wireless LAN connection. If the SSID matches for both devices, transmission is possible.
- WPS (Wi-Fi Protected Setup™) refers to a function that allows you to easily configure the settings related to the connection and security of wireless LAN devices.

The SSID and password are displayed.

Operation on the smartphone/tablet

- 

On the setting menu of your smartphone/tablet, turn on the Wi-Fi function.
- 

Select the same SSID as the one displayed on the screen in step 3.
- 

Enter the password displayed on the screen in step 3, and connect.
- 

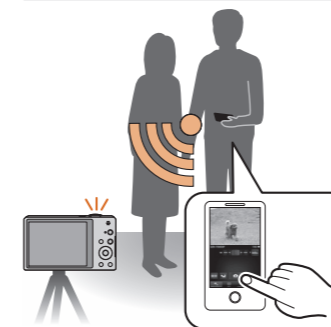
Start "Image App" on your smartphone/tablet. When the connection is established, the recording screen is displayed.

(The following is an example of when Android is being used. Screens vary depending on your OS.)

3 What you can do with the smartphone/tablet once the connection is established

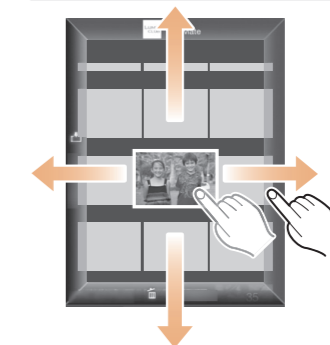
Operation on the smartphone/tablet

Recording



You can take pictures via the smartphone/tablet. (Remote Shooting)
The recorded images are saved in the camera.

Playback/Sharing



You can play back pictures in the camera. You can post pictures to a WEB service, or save them on the smartphone/tablet.

Read the [Help] in the "Image App" menu for further details on how to operate.

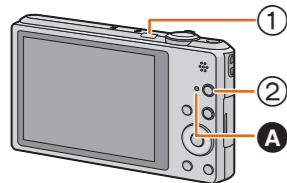


Connecting the camera to a TV or PC etc. via a wireless access point

• One of the connection methods is shown as an example. Please refer to "Owner's Manual for advanced features" (PDF) for details.

Operation on the camera

1 Turn on the Wi-Fi function.



① Press camera [ON/OFF] button.

② Press [Wi-Fi].

Make sure the Wi-Fi connection lamp **A** is lit blue.

- Lit blue: The Wi-Fi connection is on standby
- Blinking blue: Sending/receiving data through the Wi-Fi connection

2 Select [New Connection].



You can select the setting you used before from [History Connection]. Please refer to "Owner's Manual for advanced features" (PDF) for details.

3 Select the desired option.

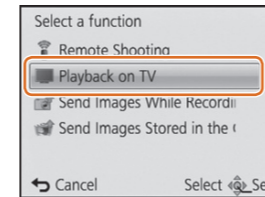
Playback on TV



You can display recorded pictures on a DLNA-compatible TV.

- For details, refer to the operating instructions of your TV.

Example: Connecting to the TV



Select [Playback on TV].

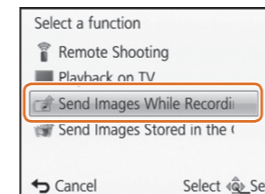
Send Images While Recording



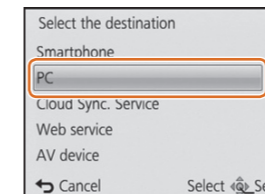
Every time you take a picture, the picture can be automatically sent to a smartphone/tablet or PC.

- Prepare folders for receiving images on the PC before sending a picture to the PC.

Example: Sending to the PC

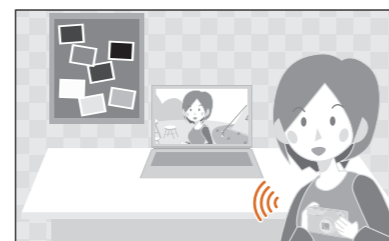


Select [Send Images While Recording].



Select [PC].

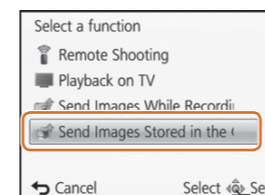
Send Images Stored in the Camera



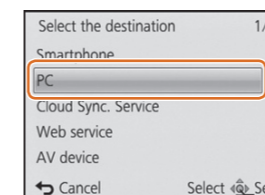
You can select and send recorded images to a smartphone/tablet or PC.

- Prepare folders for receiving images on the PC before sending a picture to the PC.

Example: Sending to the PC



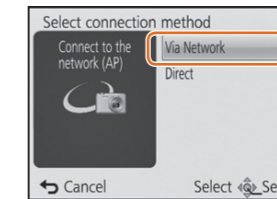
Select [Send Images Stored in the Camera].



Select [PC].

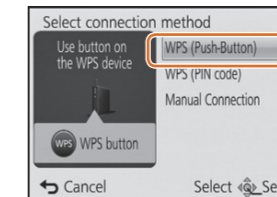
4 Select the connection method.

Connecting via a wireless access point



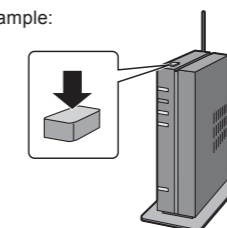
Select [Via Network].

- Example: Connecting with [WPS (Push-Button)].



Select [WPS (Push-Button)].

Example:



Press and hold the wireless access point WPS button until it switches to WPS Mode.

- You can also connect your device to the camera directly without using a wireless access point. Please refer to "Owner's Manual for advanced features" (PDF) for details.

5 Operate the camera (according to the intended purpose).

Select the device you want to connect to. When the connection is established, the screen is displayed.



Take or play back pictures on the camera.

- Motion pictures cannot be displayed on the TV.

Select the PC you want to connect to and the destination folder.



Take pictures on the camera. The pictures are sent automatically after taking them.

- Folders sorted by the sent date are created in the specified folder, and pictures are saved in those folders.
- If the screen for a user account and password entry appears, enter the one you set on your PC.

Select the PC you want to connect to and the destination folder.



Select [SINGLE] or [MULTI], and then select and send images.

Preparing folders for receiving images

Prepare folders for receiving images on the PC before sending a picture to the PC.

- Create a PC user account [account name (up to 254 characters) and password (up to 32 characters)] consisting of alphanumeric characters. An attempt to create a receive folder may fail if the account includes non-alphanumeric characters.

■ When using "PHOTOfunSTUDIO"

1 Install "PHOTOfunSTUDIO" to the PC.

- For details on hardware requirements and installation, refer to "Owner's Manual for advanced features" (PDF).

2 Create a folder that receives images with "PHOTOfunSTUDIO".

- To create the folder automatically, select [Auto-create]. To specify a folder, create a new folder, or set a password to the folder, select [Create manually].
- For details, refer to the operating instructions of "PHOTOfunSTUDIO" (PDF).

■ When not using "PHOTOfunSTUDIO"

(For Windows)

Supported OS: Windows XP/Windows Vista/Windows 7/Windows 8
Example: Windows 7

1 Select a folder you intend to use for receiving, then right-click.

2 Select [Properties], then enable sharing of the folder.

- For details, refer to the operating instructions of your PC or Help on the operating system.

(For Mac)

Supported OS: OS X v10.4 to v10.8

Example: OS X v10.8

1 Select a folder you intend to use for receiving, then click on the items in the following order.

[File] → [Get Info]

2 Enable sharing of the folder.

- For details, refer to the operating instructions of your PC or Help on the operating system.

- If the workgroup of the destination PC has been changed from the standard setting, you also need to change the setting of this unit in [PC Connection].