

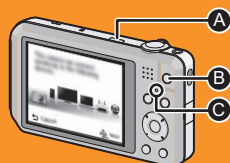
Wi-Fi connection guide

Let's connect to the Wi-Fi

- You can connect Wi-Fi compatible devices to the camera over the wireless network.
- A PC, AV devices, etc. must be connected to a wireless access point (broadband router) in advance.

- 1) Press the power button to turn the camera on.
 - The first time you turn on the camera after purchase, setup items are displayed in the following order: Clock setting → Wi-Fi Wizard.
- 2) Make the [Wi-Fi Wizard] settings according to on-screen instructions.
 - Make the settings in the following order: [Smart Transfer] → [Remote Control] → [Send Image] → [Wireless TV Playback] → [Wireless Print]
 - You can select whether to make the connection settings for each function. If you select [Skip], you can skip the settings and proceed to the next function's settings.
 - The Wi-Fi connection lamp blinks blue during sending/receiving data via Wi-Fi, and lights blue while the Wi-Fi connection is on standby.
 - You can make the settings of the skipped functions from the Wi-Fi menu by pressing the [Wi-Fi]. Please refer to "Owner's Manual for advanced features (PDF format)" for details.

Setting up the Wi-Fi connection



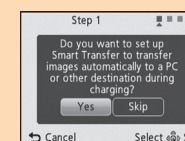
- A** Power button
- B** [Wi-Fi] button
- C** Wi-Fi connection lamp

[Smart Transfer]



Transfer recorded images to a PC, Cloud Folder or AV devices automatically.

- 1) Register the wireless access point (broadband router). (See **A** at right)
- 2) Set the destination.
 - If you transfer to [PC], create a folder that receives the data on the PC in advance. Refer to "Owner's Manual for advanced features (PDF format)" for details.
 - If you select [Cloud Sync. Service], you can register to the "LUMIX CLUB" (See **B** at right) and transfer images to a Cloud Folder on the web.
- 3) (When [Cloud Sync. Service] is selected) Register to "LUMIX CLUB".
- 4) The setting is complete. (proceed to [Remote Control])



[Remote Control]



Using the smartphone application "LUMIX LINK", you can remotely record/play back images on the smartphone screen and send images in the camera to other devices or WEB service.

- Preparation: Install the smartphone application "LUMIX LINK" (See **C** at right)
- 1) Connect to the smartphone. (See **A** at right)
 - 2) The setting is complete. (proceed to [Send Image])

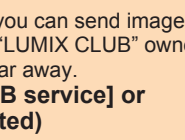


[Send Image]



You can select and send recorded images to a PC, Cloud Folder, AV devices, or upload images to SNS (Social Networking Services) via services on the web.

- 1) Register the wireless access point (broadband router). (See **A** at right)
- 2) Set the destination.
 - If you select [External] in [AV device], you can send images to Panasonic AV device compatible with "LUMIX CLUB" owned by your relatives and friends who live far away.
- 3) (When [Cloud Sync. Service], [WEB service] or [External] in [AV device] are selected) Register to "LUMIX CLUB".
- 4) (When [WEB service] or [External] in [AV device] are selected) Set the SNS or AV device destination.
- 5) The setting is complete. (proceed to [Wireless TV Playback])

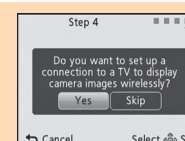


[Wireless TV Playback]



You can display recorded pictures on a DLNA-compatible TV.

- 1) Register the wireless access point (broadband router). (See **A** at right)
- 2) Set the destination.
- 3) The setting is complete. (proceed to [Wireless Print])

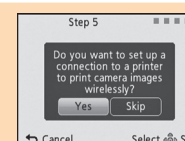


[Wireless Print]



You can print recorded pictures wirelessly from a PictBridge (wireless LAN-compatible) printer.
* Compliant with the DPS over IP standards.

- 1) Register the wireless access point (broadband router). (See **A** at right)
- 2) Set the destination.
- 3) The setting is complete. ([Wi-Fi Wizard] ends)



Completion of [Wi-Fi Wizard]

See the reverse side for details on how to use the respective functions.

When a Wi-Fi connection cannot be made

- Turn the device to connect to the camera on. If the device to connect is off, Wi-Fi connection settings sometimes cannot be made.
- Move this camera closer to the wireless access point (broadband router), or change the direction of this camera.
- Check the settings of the wireless access point (broadband router).
- The camera may not display or connect to a wireless access point (broadband router) depending on the radio wave condition.

A Register the wireless access point (broadband router)/Connect to the smartphone

- If you are using a wireless access point (broadband router)/smartphone that supports WPS^{*1} (Push button)
Select [WPS (Push-Button)]

When registering a wireless access point (broadband router)	Set the wireless access point (broadband router) to the WPS mode. ^{*2}
When connecting with the smartphone	Set the smartphone to the WPS mode. ^{*2} • Press [DISP.] to extend the connection waiting state.

*1. WPS (Wi-Fi Protected Setup™) allows a user to connect wireless LAN devices compatible with WPS to one another. Moreover, the user can make the security settings. For compatibility information, refer to the manuals of your devices.

*2. For details, refer to the manuals of your devices.

- If you are using a wireless access point (broadband router)/smartphone that does not support WPS (Push button)
Select [Manual Connection]

When registering a wireless access point (broadband router)	Select the wireless access point (broadband router) to be connected, and enter the encryption key into the camera. ^{*3}
When connecting with the smartphone	Enter the SSID and the password displayed on the camera into the smartphone. ^{*3}

*3. For details, refer to the manuals of your devices.

B About LUMIX CLUB

Refer to the "LUMIX CLUB" site for details.
<http://lumixclub.panasonic.net/eng/c/>

C About the smartphone application "LUMIX LINK"

The "LUMIX LINK" is an application provided by Panasonic that allows your smartphone to perform the following operations of a Wi-Fi-compatible LUMIX.

- Record/Play back pictures by controlling a Wi-Fi-compatible LUMIX on a smartphone screen.
- Send images stored in a Wi-Fi-compatible LUMIX to other devices or WEB services.
- Sending the location information acquired by the smartphone to this unit.

For Android™ apps (As of August 2012)

- Version: 2
 - OS: Android 2.2 - Android 4.0
 - Installation procedure
- 1) Connect your Android device to a network.
 - 2) Select "Google Play™ Store".
 - 3) Enter "LUMIX LINK" into the search box.
 - 4) Select "LUMIX LINK" and install it.
 - The icon will be added to the menu.



For iOS apps (As of August 2012)

- Version: 2
 - OS: iOS 4.3 - iOS 5.1
 - Installation procedure
- 1) Connect the iPhone to the network.
 - 2) Select "App Store™".
 - 3) Enter "LUMIX LINK" into the search box.
 - 4) Select "LUMIX LINK" and install it.
 - The icon will be added to the menu.



- The service may not be able to be used properly depending on the type of smartphone being used. For compatible devices, see the following support site.
<http://panasonic.jp/support/global/cs/dsc/> (This Site is English only.)
- When downloading the app on a mobile network, high packet communication fees may be incurred depending on the details of your contract.

Let's use the Wi-Fi functions

[Smart Transfer]

Transfer recorded images to a PC, Cloud Folder or AV devices automatically.

When sending images to a PC

- Create a folder that receives images on the PC in advance. Refer to the "Owner's Manual for advanced features (PDF format)" for details.
- Turn the computer on.

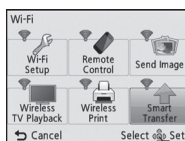
When sending images to AV device

- The destination AV device must be set up in advance. Refer to the AV device instruction manual for details.

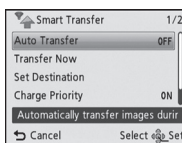
1) Press [Wi-Fi].



2) Press ▲/▼/◀/▶ to select [Smart Transfer], and press [MENU/SET].



3) Press ▲/▼ to select [Auto Transfer], and press [MENU/SET].



4) Press ▲/▼ to select [ON], and press [MENU/SET].

- Only the images you recorded when [Auto Transfer] is set to [ON] are transferred.

5) Turn off the camera.

6) (When using a power outlet) Connect the AC adaptor (supplied) and this camera with the USB connection cable (supplied), and insert the AC adaptor (supplied) into the power outlet.

(When using a PC) Connect this unit to a PC with the USB connection cable (supplied).

- Image transmission is executed after charging ends.
- Depending on the specifications of the PC, [Smart Transfer] may fail.

[Remote Control]

You can take, play back, and send images using the smartphone application "LUMIX LINK".

1) Press and hold the [Wi-Fi].

- The screen that shows the camera is waiting to be connected with the smartphone is displayed.
- Confirm that the connection destination of the smartphone is set to this unit.



When the connection between the camera and the smartphone is complete, the smartphone screen displays images in the camera. The LCD monitor of the camera turns off after displaying the remote control message.



2) Start the "LUMIX LINK".



Operations you can perform on a smartphone

- Read the [Help] in the "LUMIX LINK" menu for further details on how to operate.

Record	Playback	Send
<p>Live Control</p> <ol style="list-style-type: none"> 1 Number of recordable pictures 2 Camera battery indication 3 Zoom 4 Shutter 5 Menu display 6 Name of the connected device 	<p>Remote Operation</p>	
<p>You can perform the camera's picture-taking operation from a smartphone.</p> <ul style="list-style-type: none"> • This feature is useful when taking group photos or when taking pictures with the camera left at a location away from you. • Pictures that are taken are saved on the camera. 	<p>Pictures in the camera can be played back on the smartphone screen.</p>	<p>You can post images to SNS by operating the smartphone or save them on the smartphone.</p>

In addition to the above, location information acquired on the smartphone can be written to images taken on the camera or camera menus can be set up on the smartphone. Refer to "Owner's Manual for advanced features (PDF format)" for details.

* The screen differs depending on the operating system.

[Send Image]

You can send recorded images to PC, Cloud Folder or AV devices or upload them to SNS.

When sending images to a PC

- Create a folder that receives images on the PC in advance. Refer to the "Owner's Manual for advanced features (PDF format)" for details.
- Turn the computer on.

When sending images to an AV device in your home

- The destination AV device must be set up in advance. Refer to the AV device instruction manual for details.

When sending images to AV device outside your home

- To send images to a Panasonic AV device compatible with "LUMIX CLUB" *, register the AV device on the "LUMIX CLUB" in advance, and also register the AV device's address number on the camera in advance. Refer to the "Owner's Manual for advanced features (PDF format)" and the AV device instruction manual for details.
- * The list of compatible devices is available on the website below: <http://panasonic.jp/support/global/cs/dsc/> (This site is English only.)

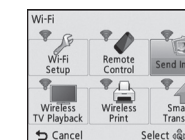
- Switch to Playback Mode.

1) Press [Wi-Fi].



2) Press ▲/▼/◀/▶ to select [Send Image], and press [MENU/SET].

- The destination confirmation screen is displayed. Select [Yes].



3) Press ▲/▼ to select [SINGLE] or [MULTI], and press [MENU/SET].

4) Select the image.

- When [SINGLE] is selected Press ◀/▶ to select the image.
- When [MULTI] is selected Press ▲/▼/◀/▶ to select the image, and press [DISP.]. (repeat this step)

5) Press [MENU/SET].

[Wireless TV Playback]

You can display recorded pictures on a DLNA-compatible TV.

- A DLNA-compatible TV is required.

Preparation:

- Set the TV to DLNA waiting mode.
- Refer to the operating instructions for your TV.

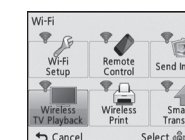
- Switch to Playback Mode.

1) Press [Wi-Fi].



2) Press ▲/▼/◀/▶ to select [Wireless TV Playback], and press [MENU/SET].

- The confirmation screen is displayed only when the connection destination is already set. When [Yes] is selected, the camera image is displayed on the TV.



[Wireless Print]

You can print recorded pictures wirelessly from a PictBridge (wireless LAN-compatible) printer.

- A PictBridge (wireless LAN-compatible) printer is required.

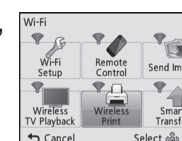
- Switch to Playback Mode.

1) Press [Wi-Fi].



2) Press ▲/▼/◀/▶ to select [Wireless Print], and press [MENU/SET].

- The confirmation screen is displayed only when the connection destination is already set. Select [Yes].



3) Press ◀/▶ to select an image, and press [MENU/SET].

4) Press ▲ to select [Print start], and press [MENU/SET].

Note

- Android and Google Play are trademarks or registered trademarks of Google Inc.
- App Store is a service mark of Apple Inc.
- "Wi-Fi", "Wi-Fi Protected Setup", "WPA" and "WPA2" are marks or registered marks of the Wi-Fi Alliance.