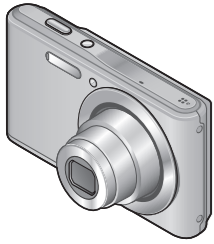


**Basic Owner's Manual**  
Digital Camera

Model No. **DMC-F5**



Please read these instructions carefully before using this product, and save this manual for future use.

More detailed instructions on the operation of this camera are contained in "Owner's Manual for advanced features (PDF format)" in the supplied CD-ROM. Install it on your PC to read it.



Register online at [www.panasonic.com/register](http://www.panasonic.com/register) (U.S. customers only)

For USA and Puerto Rico assistance, please call: 1-800-211-PANA(7262) or, contact us via the web at: <http://www.panasonic.com/contactinfo>

Panasonic Consumer Marketing Company of North America, Division of Panasonic Corporation of North America

One Panasonic Way, Secaucus, NJ 07094

© Panasonic Corporation 2013

Printed in China

P (C) VQT4W21 M1212KZ0

**FCC Note:**

This equipment has been tested and found to comply with the limits for a Class B digital device, pursuant to Part 15 of the FCC Rules. These limits are designed to provide reasonable protection against harmful interference in a residential installation. This equipment generates, uses, and can radiate radio frequency energy and, if not installed and used in accordance with the instructions, may cause harmful interference to radio communications. However, there is no guarantee that interference will not occur in a particular installation. If this equipment does cause harmful interference to radio or television reception, which can be determined by turning the equipment off and on, the user is encouraged to try to correct the interference by one or more of the following measures:

- Reorient or relocate the receiving antenna.
- Increase the separation between the equipment and receiver.
- Connect the equipment into an outlet on a circuit different from that to which the receiver is connected.
- Consult the dealer or an experienced radio/TV technician for help.

FCC Caution: To assure continued compliance, follow the attached installation instructions and use only shielded interface cables with ferrite core when connecting to computer or peripheral devices.

Any changes or modifications not expressly approved by the party responsible for compliance could void the user's authority to operate this equipment.

**Declaration of Conformity**

Trade Name: Panasonic  
Model No.: DMC-F5  
Responsible Party: Panasonic Corporation of North America  
One Panasonic Way  
Secaucus, NJ 07094  
Support Contact: Panasonic Consumer Marketing Company of North America  
1-800-211-PANA (7262)

This device complies with Part 15 of the FCC Rules. Operation is subject to the following two conditions: (1) This device may not cause harmful interference, and (2) this device must accept any interference received, including interference that may cause undesired operation.



Dear Customer,

**Thank you for choosing Panasonic!**

You have purchased one of the most sophisticated and reliable products on the market today. Used properly, we're sure it will bring you and your family years of enjoyment. Please take time to fill in the information below. The serial number is on the tag located on the underside of your camera. Be sure to **retain this manual** as your convenient camera information source.

Date of Purchase	Dealer Phone No.
Dealer Purchased From	Model No.
Dealer Address	Serial No.

Please note that the actual controls and components, menu items, etc. of your Digital Camera may look somewhat different from those shown in the illustrations in this Owner's Manual.

**Carefully observe copyright laws.**

- Recording of pre-recorded tapes or discs or other published or broadcast material for purposes other than your own private use may infringe copyright laws. Even for the purpose of private use, recording of certain material may be restricted.

**Information for Your Safety**

**WARNING:**

To reduce the risk of fire, electric shock or product damage,

- Do not expose this unit to rain, moisture, dripping or splashing.
- Use only the recommended accessories.
- Do not remove covers.
- Do not repair this unit by yourself. Refer servicing to qualified service personnel.

The socket outlet shall be installed near the equipment and shall be easily accessible.

**Product identification marking**

Product	Location
Digital Camera	Bottom

**About the battery pack**

**CAUTION**

- Battery pack (Lithium ion battery pack)
- Use the specified unit to recharge the battery pack.
  - Do not use the battery pack with equipment other than the specified unit.
  - Do not get dirt, sand, liquids, or other foreign matter on the terminals.
  - Do not touch the plug terminals (+ and -) with metal objects.
  - Do not disassemble, remodel, heat or throw into fire.
- If any electrolyte should come into contact with your hands or clothes, wash it off thoroughly with water.  
If any electrolyte should come into contact with your eyes, never rub the eyes. Rinse eyes thoroughly with water, and then consult a doctor.

**CAUTION**

- Danger of explosion if battery is incorrectly replaced. Replace only with the type recommended by the manufacturer.
- When disposing of the batteries, please contact your local authorities or dealer and ask for the correct method of disposal.

- Do not heat or expose to flame.
- Do not leave the battery(ies) in a car exposed to direct sunlight for a long period of time with doors and windows closed.

**Warning**

Risk of fire, explosion and burns. Do not disassemble, heat above 60 °C (140 °F) or incinerate.

**About the AC adaptor**

**CAUTION!**

- To reduce the risk of fire, electric shock or product damage,
- Do not install or place this unit in a bookcase, built-in cabinet or in another confined space. Ensure this unit is well ventilated.

**AC adaptor**

- This AC adaptor operates on AC between 110V and 240V. But
- In the U.S.A. and Canada, the AC adaptor must be connected to a 120V AC power supply only.
  - When connecting to an AC supply outside of the U.S.A. or Canada, use a plug adaptor to suit the AC outlet configuration.

**Cautions for use**

- Do not use any other USB connection cables except the supplied one or a genuine Panasonic USB connection cable (DMW-USBC1: optional).
- Do not use any other AC adaptors except the supplied one.
- Always use genuine Panasonic batteries (DMW-BCL7PP).
- If you use other batteries, we cannot guarantee the quality of this product.
- Keep the Memory Card out of reach of children to prevent swallowing.

Keep this unit as far away as possible from electromagnetic equipment (such as microwave ovens, TVs, video games etc.).

- If you use this unit on top of or near a TV, the pictures and/or sound on this unit may be disrupted by electromagnetic wave radiation.
- Do not use this unit near cell phones because doing so may result in noise adversely affecting the pictures and/or sound.
- Recorded data may be damaged, or pictures may be distorted, by strong magnetic fields created by speakers or large motors.
- Electromagnetic wave radiation generated by microprocessors may adversely affect this unit, disturbing the pictures and/or sound.
- If this unit is adversely affected by electromagnetic equipment and stops functioning properly, turn this unit off and remove the battery or disconnect AC adaptor. Then reinsert the battery or reconnect AC adaptor and turn this unit on.

Do not use this unit near radio transmitters or high-voltage lines.

- If you record near radio transmitters or high-voltage lines, the recorded pictures and/or sound may be adversely affected.

**Accessories**

Check that all the accessories are supplied before using the camera. Part numbers are as of January 2013. These may be subject to change.

- Battery pack**  
DMW-BCL7PP  
• Charge the battery before use.
- AC adaptor**  
VSK0768
- USB connection cable**  
K1HY08YY0033
- Hand strap**  
VFC4737
- CD-ROM**  
VFF1178
- Software  
– PHOTOfunSTUDIO 9.0 LE (Windows XP/Vista/7/8)  
– LoLoScope 30 day full trial version (Windows XP/Vista/7/8)  
(This will only install a shortcut to the trial version download site.)
- Owner's Manual for advanced features

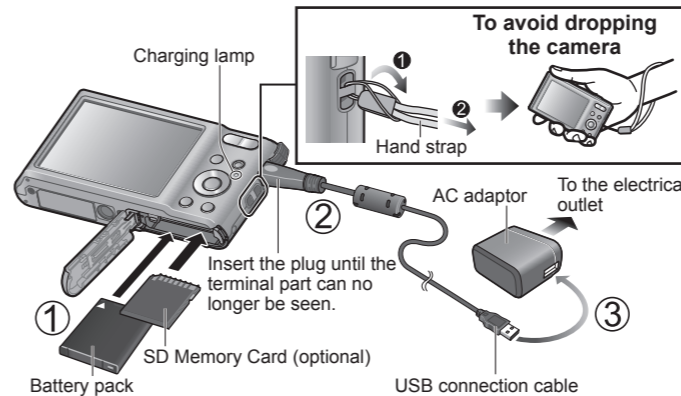
- If any accessories are lost, customers should contact Panasonic's parts department at 1-800-833-9626 for further information about obtaining replacement parts.

**Optional Accessories**

- Battery pack: DMW-BCL7  
USB connection cable: DMW-USBC1  
• Accessories and/or model numbers may vary between countries. Consult your local dealer.

**Preparations**

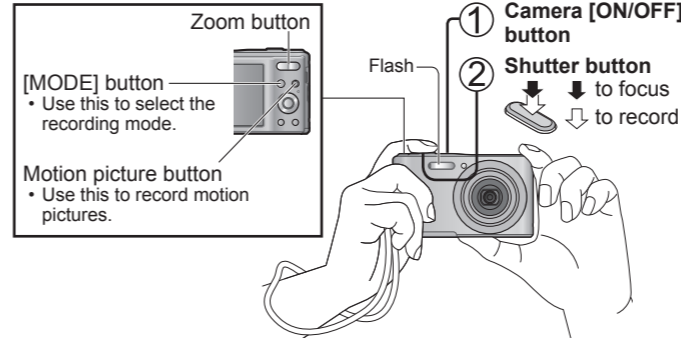
- Check that this unit is turned off.



**Charging time** Approx. 120 min

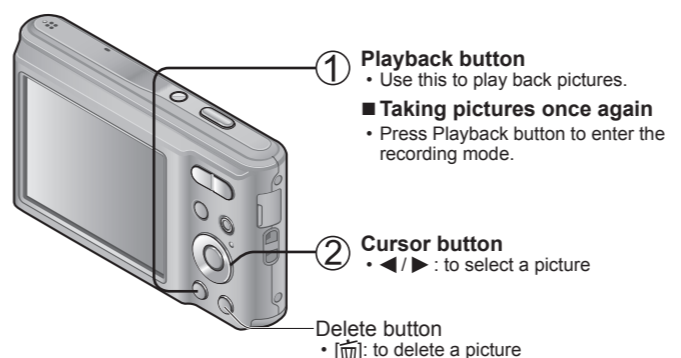
**Recording**

- Set the date and time before using the camera.



**Number of recordable still pictures with fully charged battery** Approx. 250 pictures

**Playing Back**



**Specifications**

Specifications are subject to change without notice.

Digital Camera: Information for your safety

<b>Power Source</b>	DC 5.0 V
<b>Power Consumption</b>	When recording: 1.2 W When playing back: 0.5 W
<b>Camera effective pixels</b>	14,100,000 pixels
<b>Image sensor</b>	1/2.33" CCD, total pixel number 14,500,000 pixels Primary color filter
<b>Lens</b>	Optical 5x zoom f=5 mm to 25 mm (35 mm film camera equivalent: 28 mm to 140 mm)/ F3.2 (Max. Wide) to F6.5 (Max. Tele)
<b>Focus range</b>	<b>Normal</b> 10 cm (0.33 feet) (Max. Wide) / 1 m (3.3 feet) (Max. Tele) to ∞
<b>Scene Mode</b>	There may be difference in above settings.
<b>Shutter system</b>	Electronic shutter + Mechanical shutter
<b>Shutter speed</b>	8 seconds to 1/2000th of a second
<b>Exposure (AE)</b>	AUTO (Program AE) Exposure Compensation (1/3 EV Step, -2 EV to +2 EV)
<b>Metering Mode</b>	Multiple
<b>LCD monitor</b>	2.7" TFT LCD (4:3) (Approx. 230,400 dots) (field of view ratio about 100%)
<b>Flash</b>	Flash range: (ISO) Approx. 0.6 m (2.0 feet) to 5.7 m (19 feet) (Max. Wide)
<b>Microphone</b>	Monaural
<b>Speaker</b>	Monaural
<b>Recording media</b>	Built-in Memory (Approx. 10 MB) / SD Memory Card / SDHC Memory Card / SDXC Memory Card
<b>Recording file format</b>	<b>Still picture</b> JPEG (based on Design rule for Camera File system, based on Exif 2.3 standard)
<b>Motion pictures</b>	QuickTime Motion JPEG (motion pictures with audio)
<b>Interface</b>	<b>Digital</b> USB 2.0 (High Speed)
<b>Terminal</b>	DIGITAL: Dedicated jack (8 pin)
<b>Dimensions</b>	Approx. 97.4 mm (W) × 58.0 mm (H) × 21.5 mm (D) [3.83" (W) × 2.28" (H) × 0.85" (D)] (excluding the projection part)
<b>Mass (Weight)</b>	With card and battery: Approx. 121 g (0.27 lb) Excluding card and battery: Approx. 106 g (0.23 lb)
<b>Operating temperature</b>	0 °C to 40 °C (32 °F to 104 °F)
<b>Operating humidity</b>	10%RH to 80%RH
<b>Language select</b>	[ENGLISH] / [ESPAÑOL]

AC adaptor (Panasonic VSK0768): Information for your safety

<b>Input</b>	~ 110 V to 240 V, 50/60 Hz, 0.2 A
<b>Output</b>	≒ 5 V, 800 mA

Battery pack (lithium-ion) (Panasonic DMW-BCL7PP): Information for your safety

<b>Voltage / capacity</b>	3.6 V / 690 mAh
---------------------------	-----------------



A lithium ion battery that is recyclable powers the product you have purchased. Please call 1-800-8-BATTERY for information on how to recycle this battery.

-If you see this symbol-



**Information on Disposal in other Countries outside the European Union**  
This symbol is only valid in the European Union. If you wish to discard this product, please contact your local authorities or dealer and ask for the correct method of disposal.