

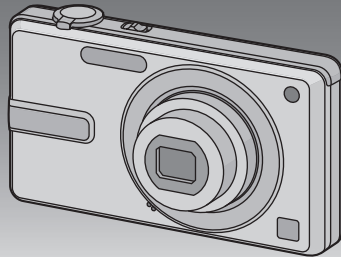
# Panasonic<sup>®</sup>

## Operating Instructions for advanced features

Digital Camera

Model No. **DMC-F3**

LUMIX



Before connecting, operating or adjusting this product,  
please read the instructions completely.



VQT2R98

# Contents

## Before Use

Quick Guide .....	4
Standard Accessories .....	6
Names of the Components .....	7

## Preparation

Charging the Battery .....	9
• Approximate operating time and number of recordable pictures .....	12
Inserting and Removing the Card (optional)/the Battery .....	13
About the Built-in Memory/the Card .....	15
Setting Date/Time (Clock Set) .....	17
• Changing the clock setting .....	18
Setting the Menu .....	19
• Setting menu items .....	20
• Using the quick menu .....	22
About the Setup Menu .....	23
Selecting the [REC] Mode .....	27

## Basic

Taking pictures using the automatic function (Auto Scene Mode) .....	28
• Scene detection .....	30
• Settings Auto Scene Mode .....	31
Taking pictures with your favorite settings (Normal Picture Mode) .....	32
• Focusing .....	33
• When the subject is not in focus (such as when it is not in the center of the composition of the picture you want to take) .....	33
• Preventing jitter (camera shake) .....	34
Taking Pictures with the Zoom .....	35
• Using the Optical Zoom/ Using the Extended Optical zoom (EZ)/ Using the Digital Zoom .....	35
Playing back Pictures (([NORMAL PLAY])) .....	37
• Displaying Multiple Screens (Multi Playback) .....	38
• Using the Playback Zoom .....	38
• Switching the [PLAYBACK] Mode .....	39

Deleting Pictures .....	40
• To delete a single picture .....	40
• To delete multiple pictures (up to 50) or all the pictures .....	41

## Advanced (Recording pictures)

About the LCD Monitor .....	42
Taking Pictures using the Built-in Flash .....	43
• Switching to the appropriate flash setting .....	43
Taking Close-up Pictures .....	48
Taking Pictures with the Self-timer .....	49
Compensating the Exposure .....	50
Taking pictures that match the scene being recorded (Scene Mode) .....	51
• [PORTRAIT] .....	52
• [SOFT SKIN] .....	52
• [SELF PORTRAIT] .....	53
• [SCENERY] .....	53
• [SPORTS] .....	53
• [NIGHT PORTRAIT] .....	54
• [NIGHT SCENERY] .....	54
• [FOOD] .....	54
• [PARTY] .....	55
• [CANDLE LIGHT] .....	55
• [BABY1]/[BABY2] .....	56
• [PET] .....	57
• [SUNSET] .....	57
• [HIGH SENS.] .....	57
• [HI-SPEED BURST] .....	58
• [FLASH BURST] .....	59
• [STARRY SKY] .....	60
• [FIREWORKS] .....	60
• [BEACH] .....	61
• [SNOW] .....	61
• [AERIAL PHOTO] .....	61
Motion Picture Mode .....	62
Useful Functions at Travel Destinations .....	65
• Recording which Day of the Vacation You Take the Picture .....	65
• Recording Dates/Times at Overseas Travel Destinations (World Time) .....	68
Using the [REC] Mode Menu .....	70
• [PICTURE SIZE] .....	70
• [SENSITIVITY] .....	71
• [WHITE BALANCE] .....	72
• [AF MODE] .....	74
• [BURST] .....	76
• [DIGITAL ZOOM] .....	76
• [COLOR MODE] .....	77

• [STABILIZER] .....	77
• [AF ASSIST LAMP] .....	78
• [RED-EYE REMOVAL] .....	78
• [CLOCK SET] .....	78
Entering Text .....	79

---

---

## Advanced (Playback)

---

---

Playing Back Pictures in Sequence (Slide Show) .....	80
Selecting Pictures and Playing them Back ([FAVORITE PLAY]) .....	83
Playing Back Motion Pictures .....	84
Using the [PLAYBACK] Mode menu .....	85
• [CALENDAR] .....	85
• [TEXT STAMP] .....	86
• [RESIZE] Reducing the Picture Size (number of pixels) .....	88
• [ROTATE] .....	90
• [FAVORITE] .....	91
• [PRINT SET] .....	92
• [PROTECT] .....	94
• [COPY] .....	95

---

---

## Connecting to other equipment

---

---

Connecting to a PC .....	96
Printing the Pictures .....	99
• Selecting a single picture and printing it .....	100
• Selecting multiple pictures and printing them .....	101
• Print Settings .....	102
Playing Back Pictures on a TV Screen .....	105
• Playing back pictures using the AV cable (supplied) .....	105
• Playing back pictures on a TV with an SD Memory Card slot .....	106

---

---

## Others

---

---

Screen Display .....	107
Cautions for Use .....	110
Message Display .....	116
Troubleshooting .....	119
Number of Recordable Pictures and Available Recording Time .....	128

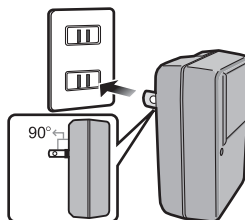
## Quick Guide

This is an overview of how to record and play back pictures with the camera. For each step, be sure to refer to the pages indicated in brackets.

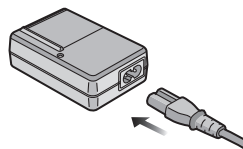
### 1 Charge the battery. (P9)

- The battery is not charged when the camera is shipped. Charge the battery before use.

plug-in type

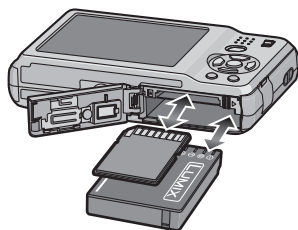


inlet type



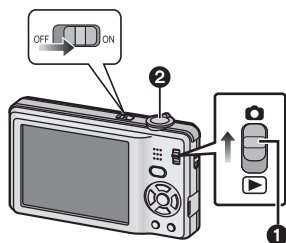
### 2 Insert the battery and the card. (P13)

- When you do not use the card, you can record or play back pictures on the built-in memory. (P15) Refer to P16 when you use a card.



### 3 Turn the camera on to take pictures.

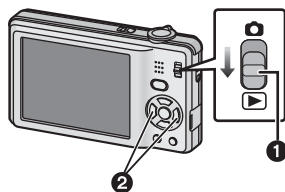
- 1 Slide the [REC]/[PLAYBACK] selector switch to [RECORD].
- 2 Press the shutter button to take pictures. (P29)



**4**

**Play back the pictures.**

- 1 Slide the [REC]/[PLAYBACK] selector switch to [▶].
- 2 Select the picture you want to view.  
(P37)



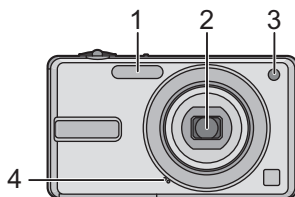
## Standard Accessories

Check that all the accessories are included before using the camera.

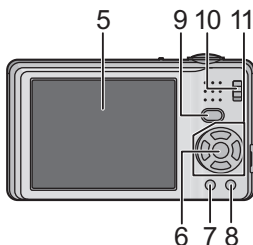
- The accessories and their shape will differ depending on the country or area where the camera was purchased.  
For details on the accessories, refer to Basic Operating Instructions.
- Battery Pack is indicated as **battery pack** or **battery** in the text.
- Battery Charger is indicated as **battery charger** or **charger** in the text.
- SD Memory Card, SDHC Memory Card and SDXC Memory Card are indicated as **card** in the text.
- **The card is optional.**  
**You can record or play back pictures on the built-in memory when you are not using a card.**
- If any accessories are lost, customers in the USA and Puerto Rico should contact Panasonic's parts department at 1 800 833-9626 and customers in Canada should contact 1 800 99-LUMIX (1-800-995-8649) for further information about obtaining replacement parts.

## Names of the Components

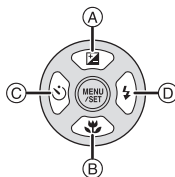
- 1 Flash (P43)
- 2 Lens (P112)
- 3 Self-timer indicator  
AF assist lamp (P78)
- 4 Microphone (P62)



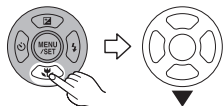
- 5 LCD monitor (P42, 107)
- 6 [MENU/SET] button (P17)
- 7 [DISPLAY] button (P42)
- 8 [Q.MENU] (P22)/Delete (P40) button
- 9 [MODE] button (P27)
- 10 [REC]/[PLAYBACK] selector switch (P19)



- 11 Cursor buttons
  - (A) ▲/Exposure compensation (P50)
  - (B) ▼/Macro Mode (P48)
  - (C) ◀/Self-timer button (P49)
  - (D) ▶/Flash setting button (P43)



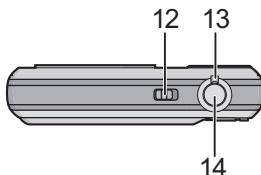
In these operating instructions, the cursor buttons are described as shown in the figure below or described with ▲/▼/◀/▶.  
e.g.: When you press the ▼ (down) button



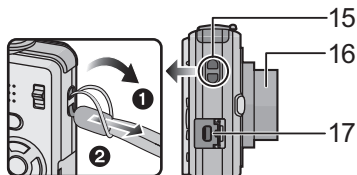
or

Press ▼

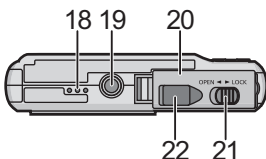
- 12 Camera ON/OFF switch (P17)
- 13 Zoom lever (P35)
- 14 Shutter button (P29, 62)



- 15 Hand strap eyelet
  - Be sure to attach the hand strap when using the camera to ensure that you will not drop it.
- 16 Lens barrel
- 17 [AV OUT/DIGITAL] socket (P96, 99, 105)



- 18 Speaker (P84)
- 19 Tripod receptacle
  - When you use a tripod, make sure the tripod is stable when the camera is attached to it.



- 20 Card/Battery door (P13, 14)
- 21 Release lever (P13)
- 22 DC coupler cover (P14)
  - When using an AC adaptor, ensure that the Panasonic DC coupler (optional) and AC adaptor (optional) are used. For connection details, refer to P14.



## Charging the Battery

### ■ About batteries that you can use with this unit

**Supplied battery or dedicated optional batteries can be used with this unit.**

Refer to Basic Operating Instructions about the accessory number of the available optional batteries in your area.

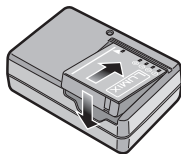
It has been found that counterfeit battery packs which look very similar to the genuine product are made available to purchase in some markets. Some of these battery packs are not adequately protected with internal protection to meet the requirements of appropriate safety standards. There is a possibility that these battery packs may lead to fire or explosion. Please be advised that we are not liable for any accident or failure occurring as a result of use of a counterfeit battery pack. To ensure that safe products are used we would recommend that a genuine Panasonic battery pack is used.

- Use the dedicated charger and battery.
- The camera has a function for distinguishing batteries which can be used safely. The dedicated battery supports this function. The only batteries suitable for use with this unit are genuine Panasonic products and batteries manufactured by other companies and certified by Panasonic. (Batteries which do not support this function cannot be used). Panasonic cannot in any way guarantee the quality, performance or safety of batteries which have been manufactured by other companies and are not genuine Panasonic products.

### ■ Charging

- **The battery is not charged when the camera is shipped. Charge the battery before use.**
- Charge the battery with the charger indoors.
- Charge the battery in a temperature between 10 °C to 35 °C (50 °F to 95 °F). (The battery temperature should also be the same.)

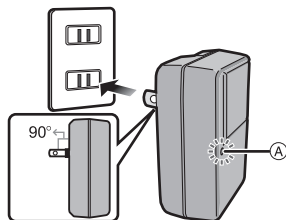
- 1 Attach the battery paying attention to the direction of the battery.**



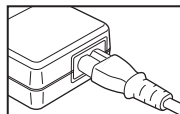
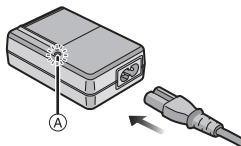
## 2 Connect the charger to the electrical outlet.

- The AC cable does not fit entirely into the AC input terminal. A gap will remain as shown below.
- Charging starts when the [CHARGE] indicator (A) lights green.
- Charging is properly complete when the [CHARGE] indicator (A) turns off.

plug-in type

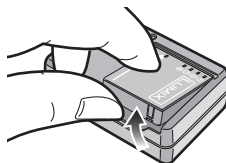


inlet type



## 3 Detach the battery after charging is completed.

- After charging is completed, be sure to disconnect the power supply device (charger) from the electrical outlet.



### ■ Charging time

	Supplied battery	Optional battery
Charging time	Approx. 100 min	Approx. 130 min

- Time required for charging when using the charger supplied with this unit.
- **The indicated charging time is for when the battery has been discharged completely. The charging time may vary depending on how the battery has been used. The charging time for the battery in hot/cold environments or a battery that has not been used for a long time may be longer than normal.**

### ■ When the [CHARGE] indicator flashes

- The battery temperature is too high or too low. Please charge the battery again in a temperature between 10 °C to 35 °C (50 °F to 95 °F).
- The terminals of the charger or the battery are dirty. In this case, wipe them with a dry cloth.

### ■ Battery indication

The battery indication is displayed on the LCD monitor.

[It does not appear when you use the camera with the AC adaptor (optional) connected.]



- The indication turns red and blinks if the remaining battery power is exhausted. Recharge the battery or replace it with a fully charged battery.

### Note

- The battery becomes warm after use and during and after charging. The camera also becomes warm during use. This is not a malfunction.
- The battery can be recharged even when it still has some charge left, but it is not recommended that the battery charge be frequently topped up while the battery is fully charged. (Since characteristic swelling may occur.)
- **Do not leave any metal items (such as clips) near the contact areas of the power plug. Otherwise, a fire and/or electric shocks may be caused by short-circuiting or the resulting heat generated.**

## Approximate operating time and number of recordable pictures

	Supplied battery	Optional battery
<b>Capacity of the battery</b>	<b>740 mAh</b>	<b>940 mAh</b>
<b>Number of recordable pictures</b>	<b>Approx. 220 pictures</b>	<b>Approx. 260 pictures</b>
<b>Recording time</b>	<b>Approx. 110 min</b>	<b>Approx. 130 min</b>

### Recording conditions by CIPA standard

- CIPA is an abbreviation of [Camera & Imaging Products Association].
- Normal Picture Mode.
- Temperature: 23 °C (73.4 °F)/Humidity: 50% when LCD monitor is on.
- Using a Panasonic SD Memory Card (32 MB).
- Starting recording 30 seconds after the camera is turned on.
- **Recording once every 30 seconds** with full flash every second recording.
- Rotating the zoom lever from Tele to Wide or vice versa in every recording.
- Turning the camera off every 10 recordings and leaving it until the temperature of the battery decreases.

**The number of recordable pictures varies depending on the recording interval time. If the recording interval time becomes longer, the number of recordable pictures decreases. [For example, if you were to take one picture every two minutes, then the number of pictures would be reduced to approximately one-quarter of the number of pictures given above (based upon one picture taken every 30 seconds).]**

	Supplied battery	Optional battery
<b>Playback time</b>	<b>Approx. 270 min</b>	<b>Approx. 340 min</b>



### Note

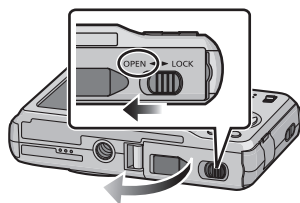
- **The operating times and number of recordable pictures will differ according to the environment and the operating conditions.**  
For example, in the following cases, the operating times shorten and the number of recordable pictures is reduced.
  - In low-temperature environments, such as on ski slopes.
  - When using [AUTO POWER LCD], [POWER LCD] and [HIGH ANGLE] (P24).
  - When operations such as flash and zoom are used repeatedly.
- When the operating time of the camera becomes extremely short even after properly charging the battery, the life of the battery may have expired. Buy a new battery.

## Inserting and Removing the Card (optional)/the Battery

- Check that this unit is turned off.
- We recommend using a Panasonic card.

**1** Slide the release lever in the direction of the arrow and open the card/battery door.

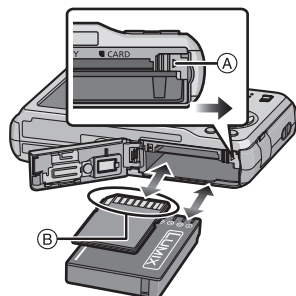
- Always use genuine Panasonic batteries.
- If you use other batteries, we cannot guarantee the quality of this product.



**2** **Battery:** Insert until it is locked by the lever (A) being careful about the direction you insert it. Pull the lever (A) in the direction of the arrow to remove the battery.

**Card:** Push it fully until it clicks being careful about the direction you insert it. To remove the card, push the card until it clicks, then pull the card out upright.

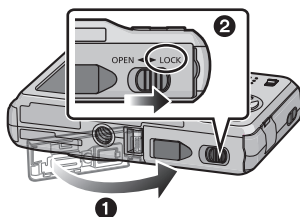
- (B): Do not touch the connection terminals of the card.
- The card may be damaged if it is not fully inserted.



**3** **1:** Close the card/battery door.

**2:** Slide the release lever in the direction of the arrow.

- If the card/battery door cannot be completely closed, remove the card, check its direction and then insert it again.



### Note

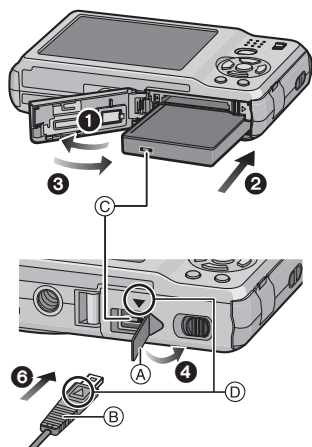
- Remove the battery after use. Store the removed battery in the battery case (supplied).
- Do not remove the battery until the LCD monitor turns off as the settings on the camera may not be stored properly.
- The supplied battery is designed only for the camera. Do not use it with any other equipment.
- The battery will be exhausted if left for a long period of time after being charged.
- Turn the camera off and wait for the "LUMIX" display on the LCD monitor to clear before removing the card or battery. (Otherwise, this unit may no longer operate normally and the card itself may be damaged or the recorded pictures may be lost.)

### ■ Using an AC adaptor (optional) and a DC coupler (optional) instead of the battery

**Ensure that the AC adaptor (optional) and DC coupler (optional) are purchased as a set. Do not use if sold separately.**

- 1 Open the card/battery door.
- 2 Insert the DC coupler, being careful of the direction.
- 3 Close the card/battery door.
  - Ensure that the card/battery door is closed.
- 4 Open the DC coupler cover (A).
  - If it is difficult to open, push open the coupler cover from the interior with the card/battery door in an open state.
- 5 Plug the AC adaptor into an electrical outlet.
- 6 Connect the AC adaptor (B) to the [DC IN] socket (C) of the DC coupler.

- (D) Align the marks, and insert.
- Ensure that only the AC adaptor and DC coupler for this camera are used. Using any other equipment may cause damage.

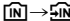



### Note

- Always use a genuine Panasonic AC adaptor (optional).
- When using an AC adaptor, use the AC cable supplied with the AC adaptor.
- Some tripods cannot be attached when the DC coupler is connected.
- This unit cannot stand upright when the AC adaptor is connected. When operating it on a flat surface, we recommend placing it on a soft cloth.
- Make sure to unplug the AC adaptor when you open the card/battery door.
- If the AC adaptor and DC coupler are not necessary, then remove them from the digital camera. Also, please keep the DC coupler cover closed.
- Also read the operating instructions for the AC adaptor and DC coupler.
- We recommend you use a battery with sufficient battery power or the AC adaptor when recording motion pictures.
- If while recording motion pictures using the AC adaptor and the power supply is cut off due to a power outage or if the AC adaptor is disconnected etc., the motion picture being recorded will not be recorded.

## About the Built-in Memory/the Card

The following operations can be performed using this unit.

- **When a card has not been inserted: Pictures can be recorded in the built-in memory and played back.**
  - **When a card has been inserted: Pictures can be recorded on the card and played back.**
  - **When using the built-in memory**  
 (access indication\*)
  - **When using the card**  
 (access indication\*)
- \* The access indication lights red when pictures are being recorded on the built-in memory (or the card).



### Built-in Memory

- **You can copy the recorded pictures to a card. (P95)**
- **Memory size: Approx. 40 MB**
- **Recordable motion pictures: QVGA (320×240 pixels) only**
- The built-in memory can be used as a temporary storage device when the card being used becomes full.
- The access time for the built-in memory may be longer than the access time for a card.

## Card

The following cards which conform to the SD video standard can be used with this unit. (These cards are indicated as **card** in the text.)

Type of card which can be used with this unit	Remarks
<b>SD Memory Card (8 MB to 2 GB)</b>	<ul style="list-style-type: none"> <li>• SDHC Memory Cards and SDXC Memory Cards can be used only in equipment that is compatible with their respective formats.</li> <li>• Check that the PC and other equipment are compatible when using the SDXC Memory Cards. <a href="http://panasonic.net/avc/sdcard/information/SDXC.html">http://panasonic.net/avc/sdcard/information/SDXC.html</a></li> </ul>
<b>SDHC Memory Card (4 GB to 32 GB)</b>	
<b>SDXC Memory Card (48 GB to 64 GB)</b>	

- Only cards bearing the SDHC logo (indicating that the card conforms to SD video standards) may be used as 4 GB to 32 GB cards.
- Only cards bearing the SDXC logo (indicating that the card conforms to SD video standards) may be used as 48 GB to 64 GB cards.
- Use a card with SD Speed Class\* with “Class 6” or higher when recording motion pictures.  
\* SD speed class is the speed standard regarding continuous writing.
- Please confirm the latest information on the following website.

<http://panasonic.jp/support/global/cs/dsc/>

(This Site is English only.)

### Note

- **Do not turn this unit off, remove its battery or card, or disconnect the AC adaptor (optional) when the access indication is lit [when pictures are being written, read or deleted, or the built-in memory or the card is being formatted (P26)]. Furthermore, do not subject the camera to vibration, impact or static electricity. The card or the data on the card may be damaged, and this unit may no longer operate normally. If operation fails due to vibration, impact or static electricity, perform the operation again.**
- Write-Protect switch (A) provided (When this switch is set to the [LOCK] position, no further data writing, deletion or formatting is possible. The ability to write, delete and format data is restored when the switch is returned to its original position.)
- The data on the built-in memory or the card may be damaged or lost due to electromagnetic waves, static electricity or breakdown of the camera or the card. We recommend storing important data on a PC etc.
- Do not format the card on your PC or other equipment. Format it on the camera only to ensure proper operation. (P26)
- Keep the Memory Card out of reach of children to prevent swallowing.





## Setting Date/Time (Clock Set)

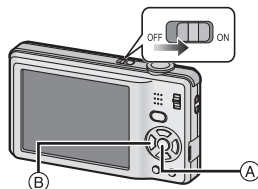
• The clock is not set when the camera is shipped.

### 1 Turn the camera on.

(A) [MENU/SET] button

(B) Cursor buttons

- If the language select screen is not displayed, proceed to step 4.



### 2 Press [MENU/SET].

### 3 Press ▲/▼ to select the language, and press [MENU/SET].

- The [PLEASE SET THE CLOCK] message appears. (This message does not appear in [PLAYBACK] Mode.)

### 4 Press [MENU/SET].



**5** Press ◀/▶ to select the items (year, month, day, hour, minute, display sequence or time display format), and press ▲/▼ to set.

(A): Time at the home area

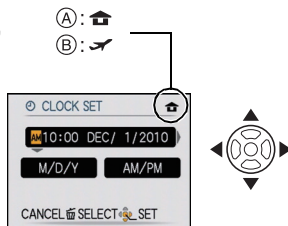
(B): Time at the travel destination (P68)

⏏: Cancel without setting the clock

- Select either [24HRS] or [AM/PM] for the time display format.

- AM/PM is displayed when [AM/PM] is selected.

- When [AM/PM] is selected as the time display format, midnight is displayed as AM 12:00 and noon is displayed as PM 12:00. This display format is common in North America and elsewhere.



**6** Press [MENU/SET] to set.

**7** Press [MENU/SET].

- Press [⏏] to return to the settings screen.

- After completing the clock settings, turn the camera off. Then turn the camera back on, switch to Recording Mode, and check that the display reflects the settings that were performed.

- When [MENU/SET] has been pressed to complete the settings without the clock having been set, set the clock correctly by following the "Changing the clock setting" procedure below.

### Changing the clock setting

Select [CLOCK SET] in the [REC] or [SETUP] menu, and press ▶. (P20)

- It can be changed in steps 5, 6 and 7 to set the clock.

- **The clock setting is maintained for 3 months using the built-in clock battery even without the battery. (Leave the charged battery in the unit for 24 hours to charge the built-in battery.)**

#### Note

- The clock is displayed when [DISPLAY] is pressed several times during recording.

- You can set the year from 2000 to 2099.

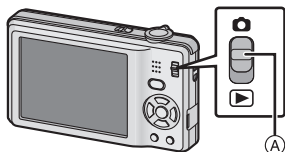
- If the clock is not set, the correct date cannot be printed when you stamp the date on the pictures with [TEXT STAMP] (P86) or order a photo studio to print the pictures.

- If the clock is set, the correct date can be printed even if the date is not displayed on the screen of the camera.

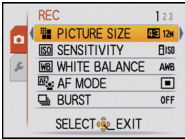
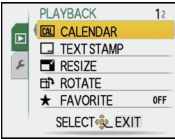

## Setting the Menu

The camera comes with menus that allow you to choose the settings for taking pictures and playing them back just as you like and menus that enable you to have more fun with the camera and use it more easily.

In particular, the [SETUP] menu contains some important settings relating to the camera's clock and power. Check the settings of this menu before proceeding to use the camera.



### A [REC]/[PLAYBACK] selector switch

<b>[REC] Mode menu (P70 to 78)</b>	<b>[PLAYBACK] Mode menu (P85 to 95)</b>
<ul style="list-style-type: none"> <li>The menu lets you set the Coloring, Sensitivity or number of pixels, etc. of pictures you are recording.</li> </ul> 	<ul style="list-style-type: none"> <li>This menu lets you set the Protection or Print Settings, etc. of recorded pictures.</li> </ul> 
<b>[SETUP] menu (P23 to 26)</b>	
<ul style="list-style-type: none"> <li>This menu lets you perform the clock settings, beep sound settings and other settings which make it easier for you to operate the camera.</li> <li>The [SETUP] menu can be set from either the [REC] Mode or [PLAYBACK] Mode.</li> </ul>	

### Note

- Due to the camera's specifications, it may not be possible to set some of the functions or some functions may not work in some of the conditions under which the camera is used.

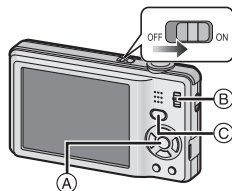
## Setting menu items

This section describes how to select the Normal Picture Mode settings, and the same setting can be used for the [PLAYBACK] menu and [SETUP] menu as well.

Example: Setting [AF MODE] from [ ] to [ ] in the Normal Picture Mode

### 1 Turn the camera on.

- A [MENU/SET] button
- B [REC]/[PLAYBACK] selector switch
- C [MODE] button



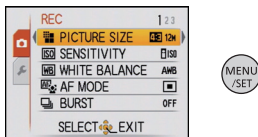
### 2 Slide the [REC]/[PLAYBACK] selector switch to [ ], and then press [MODE].

- When selecting the [PLAYBACK] Mode menu settings, set the [REC]/[PLAYBACK] selector switch to [▶], and proceed to step 4.

### 3 Press ▲/▼ to select [NORMAL PICTURE], and then press [MENU/SET].

### 4 Press [MENU/SET] to display the menu.

- You can switch menu screens from any menu item by rotating the zoom lever.



### 5 Press ▲/▼ to select [AF MODE].

- Select the item at the very bottom, and press ▼ to move to the second screen.



### 6 Press ▶.

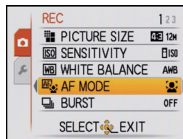
- Depending on the item, its setting may not appear or it may be displayed in a different way.



### 7 Press ▲/▼ to select [ ].



**8** Press [MENU/SET] to set.



**9** Press [MENU/SET] to close the menu.

Switching to other menus

e.g.: Switching to the [SETUP] menu

- 1** Press [MENU/SET] to display the menu.

 A screenshot of a camera's menu. At the top, it says 'REC' and '1 2 3'. The menu items are: PICTURE SIZE (12M), SENSITIVITY (ISO), WHITE BALANCE (AMB), AF MODE (highlighted in yellow), and BURST (OFF). At the bottom, there is a 'SELECT EXIT' option with a right arrow icon.
 
 A circular icon representing the MENU/SET button.
   

- 2** Press ◀.

 A screenshot of a camera's menu. At the top, it says 'REC' and '1 2 3'. The menu items are: PICTURE SIZE (12M), SENSITIVITY (ISO), WHITE BALANCE (AMB), AF MODE (highlighted in yellow), and BURST (OFF). At the bottom, there is a 'SELECT EXIT' option with a right arrow icon.
 
 A circular icon representing the directional pad button.
   

- 3** Press ▼ to select the [SETUP] menu icon [⏏].

 A screenshot of a camera's menu. At the top, it says 'SETUP' and '1 2 3 4'. The menu items are: CLOCK SET, WORLD TIME, TRAVEL DATE, BEEP, and VOLUME (LEVEL 3). At the bottom, there is a 'SELECT EXIT' option with a right arrow icon.
 
 A circular icon representing the directional pad button.
   

- 4** Press ▶.
  - Select a menu item next and set it.

 A screenshot of a camera's menu. At the top, it says 'SETUP' and '1 2 3 4'. The menu items are: CLOCK SET (highlighted in yellow), WORLD TIME, TRAVEL DATE, BEEP, and VOLUME (LEVEL 3). At the bottom, there is a 'SELECT EXIT' option with a right arrow icon.
 
 A circular icon representing the directional pad button.

## Using the quick menu

By using the quick menu, some of the menu settings can be easily found.

• Some of the menu items cannot be set by the modes.

**1** Press and hold [Q.MENU] when recording.

**2** Press ▲/▼/◀/▶ to select the menu item and the setting and then press [MENU/SET] to close the menu.

Ⓐ The items to be set and the settings are displayed.




## About the Setup Menu




[CLOCK SET], [SLEEP MODE] and [AUTO REVIEW] are important items. Check their settings before using them.

• In the Auto Scene Mode, only [CLOCK SET], [WORLD TIME], [BEEP] and [LANGUAGE] can be set.


For details on how to select the [SETUP] menu settings, refer to [P20](#).

 [CLOCK SET]	Setting Date/Time.
---	--------------------


• Refer to [P17](#) for details.

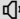
 [WORLD TIME]	Set the time in your home area and travel destination.	
	 [DESTINATION]: Travel destination area	 [HOME]: Your home area

• Refer to [P68](#) for details.

 [TRAVEL DATE]	Set the departure date and the return date of the vacation.	
	[TRAVEL SETUP]: [OFF]/[SET]	[LOCATION]: [OFF]/[SET]

• Refer to [P65](#) for details.

 [BEEP]	This allows you to set the beep and shutter sound volume.	
	[Muted] [Low] [High]	

 [VOLUME]	Adjust the volume of the speaker to any of 7 levels.
---	--

• When you connect the camera to a TV, the volume of the TV speakers does not change.

<b>LCD [LCD MODE]</b>	These menu settings make it easier to see the LCD monitor when you are in bright places or when you are holding the camera high above your head.
	<p><b>[OFF]</b></p> <p><b>[A*] [AUTO POWER LCD]:</b> The brightness is adjusted automatically depending on how bright it is around the camera.</p> <p><b>[*] [POWER LCD]:</b> The LCD monitor becomes brighter and easier to see even when taking pictures outdoors.</p> <p><b>[H] [HIGH ANGLE]:</b> The LCD monitor is easier to see when taking pictures with the camera held high above your head.</p>


- High Angle Mode is also canceled if you turn the camera off or [SLEEP MODE] is activated.
- The brightness of the pictures displayed on the LCD monitor is increased so some subjects may appear different from real life on the LCD monitor. However, this does not affect the recorded pictures.
- The LCD monitor automatically returns to normal brightness after 30 seconds when recording in Power LCD Mode. Press any button to make the LCD monitor bright again.
- If the screen is difficult to see because of light shining on it, use your hand or another object to block the light.
- The number of recordable pictures decreases in Auto Power LCD Mode, Power LCD Mode and High Angle Mode.
- [AUTO POWER LCD] and [HIGH ANGLE] cannot be selected in Playback Mode.

<b>A/A [DISPLAY SIZE]</b>	Change the display size of some icons and menu screens.
	<b>[STANDARD]/[LARGE]</b>


<b>[SLEEP MODE]</b>	The camera is automatically turned off if the camera has not been used for the time selected on the setting.
	<b>[OFF]/[2MIN.]/[5MIN.]/[10MIN.]</b>

- Press the shutter button halfway or turn the camera off and on to cancel [SLEEP MODE].
- [SLEEP MODE] is set to [5MIN.] in the Auto Scene Mode.
- [SLEEP MODE] does not work in the following cases.
  - When using the AC adaptor
  - When connecting to a PC or a printer
  - When recording or playing back motion pictures
  - During a Slide Show
  - [AUTO DEMO]




 <b>[AUTO REVIEW]</b>	Set the length of time that the picture is displayed after taking it.
	<b>[OFF]</b> <b>[1SEC.]</b> <b>[2SEC.]</b> <b>[HOLD]:</b> The pictures are displayed until one of the buttons is pressed.


- [AUTO REVIEW] is activated regardless of its setting when using [SELF PORTRAIT] (P53), [HI-SPEED BURST] (P58) and [FLASH BURST] (P59) in Scene Mode and [BURST] (P76).
- In Auto Scene Mode, the Auto Review function is fixed to [2SEC.].
- [AUTO REVIEW] does not work in Motion Picture Mode.

 <b>[RESET]</b>	The [REC] or [SETUP] menu settings are reset to the initial settings.
--	---

- When the [RESET] setting is selected during recording, the operation that resets the lens is also performed at the same time. You will hear the sound of the lens operating but this is normal and not indicative of malfunctioning.
- When [SETUP] menu settings are reset, the following settings are also reset. In addition, [FAVORITE] (P91) in [PLAYBACK] Mode menu is set to [OFF].
  - The birthday and name settings for [BABY1]/[BABY2] (P56) and [PET] (P57) in Scene Mode.
  - The settings of [TRAVEL DATE] (P65) (departure date, return date, location)
  - The [WORLD TIME] (P68) setting.
- The folder number and the clock setting are not changed.


 <b>[VIDEO OUT]*</b>	Set to match the color television system in each country. (Playback Mode only)
	<b>[NTSC]:</b> Video output is set to NTSC system. <b>[PAL]:</b> Video output is set to PAL system.

- This will work when the AV cable is connected.
- \* PAL video out is not available on the version DMC-F3P sold in the U.S. and the version DMC-F3PC sold in Canada.

 <b>[TV ASPECT]</b>	Set to match the type of TV. (Playback Mode only)
	<b>[16:9]:</b> When connecting to a 16:9 screen TV. <b>[4:3]:</b> When connecting to a 4:3 screen TV.

- This will work when the AV cable is connected.


<b>Ver.</b> <b>[VERSION DISP.]</b>	It is possible to check which version of firmware is on the camera.
------------------------------------	---

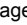
 <b>[FORMAT]</b>	The built-in memory or card is formatted. Formatting irretrievably deletes all the data so check the data carefully before formatting.
---	--

- Use a battery with sufficient battery power or the AC adaptor (optional) and DC coupler (optional) when formatting. Do not turn the camera off during formatting.
- If a card has been inserted, only the card is formatted. To format the built-in memory, remove the card.
- If the card has been formatted on a PC or other equipment, format it on the camera again.
- It may take longer to format the built-in memory than the card.
- If the built-in memory or the card cannot be formatted, consult your nearest Service Center.

For USA and Puerto Rico assistance, please call:  
1-800-211-PANA(7262) or, contact us via the web at:  
<http://www.panasonic.com/contactinfo>

For Canadian assistance, please call:  
1-800-99-LUMIX (1-800-995-8649) or  
send e-mail to: [lumixconciierge@ca.panasonic.com](mailto:lumixconciierge@ca.panasonic.com)

 <b>[LANGUAGE]</b>	Set the language displayed on the screen.
---	---

- If you set a different language by mistake, select [] from the menu icons to set the desired language.

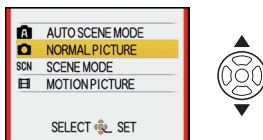
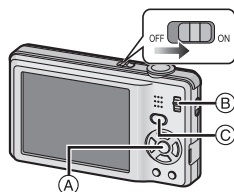
<b>DEMO [AUTO DEMO]</b>	The camera's features are displayed as Slide Shows.
	<b>[OFF]</b> <b>[ON]</b>

- [AUTO DEMO] has no TV output capability even when it is in Playback Mode.
- Press [MENU/SET] to close [AUTO DEMO].

## Selecting the [REC] Mode

When the [REC] Mode is selected, the camera can be set to the Auto Scene Mode in which the optimal settings are established in line with the subject to be recorded and the recording conditions, or to the Scene Mode which enables you to take pictures that match the scene being recorded.

- 1 **Turn the camera on.**
  - A [MENU/SET] button
  - B [REC]/[PLAYBACK] selector switch
  - C [MODE] button
- 2 **Slide the [REC]/[PLAYBACK] selector switch to [📷].**
- 3 **Press [MODE].**
- 4 **Press ▲/▼ to select the mode.**
- 5 **Press [MENU/SET].**



### ■ List of [REC] Modes

#### **📷 Auto Scene Mode (P28)**

The subjects are recorded using settings automatically selected by the camera.

#### **📷 Normal Picture Mode (P32)**

The subjects are recorded using your own settings.

#### **SCN Scene Mode (P51)**

This allows you to take pictures that match the scene being recorded.

#### **🎞️ Motion Picture Mode (P62)**

This mode allows you to record motion pictures with audio.

#### **Note**

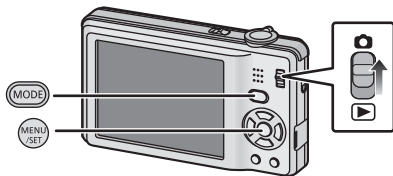
- When the mode has been switched from [PLAYBACK] Mode to [REC] Mode, the previously set [REC] Mode will be set.

[REC] Mode: **A**

## Taking pictures using the automatic function (Auto Scene Mode)

The camera will set the most appropriate settings to match the subject and the recording conditions so we recommend this mode for beginners or those who want to leave the settings to the camera and take pictures easily.

- The following functions are activated automatically.
  - Scene detection /Face Detection/Motion Detection/Backlight Compensation/Digital Red-eye Correction



- 1** Slide the [REC]/[PLAYBACK] selector switch to **[📷]**, and then press [MODE].

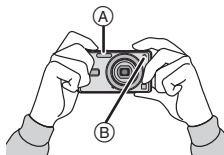
- 2** Press **▲/▼** to select [AUTO SCENE MODE], and then press [MENU/SET].

- The scene detection icon (P30) is displayed in the upper-left hand corner of the screen after switching to Auto Scene Mode.



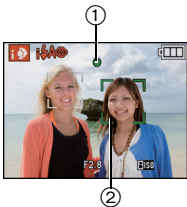
- 3** Hold the camera gently with both hands, keep your arms still at your side and stand with your feet slightly apart.

- (A) Flash
- (B) AF assist lamp



#### 4 Press the shutter button halfway to focus.

- The focus indication ① (green) lights when the subject is focused.
- The AF area ② is displayed around the subject's face by the Face Detection function. In other cases, it is displayed at the point on the subject which is in focus.
- The focus range is 20 cm (0.66 feet) (Wide)/70 cm (2.30 feet) (Tele) to  $\infty$ .
- The maximum close-up distance (the shortest distance at which the subject can be taken) differs depending on the zoom magnification.



#### 5 Press the shutter button fully (push it in further), and take the picture.

- The access indication (P15) lights red when pictures are being recorded on the built-in memory (or the card).



#### Note

- Be careful not to move the camera when you press the shutter button.
- Do not cover the flash or the AF assist lamp with your fingers or other objects.
- Do not touch the front of the lens.






#### ■ When taking pictures using the flash (P43)

- When [iA] is selected, [iA], [iA] or [iS] is set depending on the type of subject and brightness.
- When [iA] or [iS] is set, Digital Red-Eye Correction is enabled.

#### ■ When taking pictures using the zoom (P35)

## Scene detection

When the camera identifies the optimum scene, the icon of the scene concerned is displayed in blue for 2 seconds, after which its color changes to the usual red.

<b>A</b>	→		[i- <b>P</b> ORTRAIT]	
			[i- <b>S</b> CENERY]	
			[i- <b>M</b> ACRO]	
			[i- <b>N</b> IGHT PORTRAIT]	• Only when [i- <b>A</b> ] is selected
			[i- <b>N</b> IGHT SCENERY]	

- [A] is set if none of the scenes are applicable, and the standard settings are set.
- When [i-P] or [i-S] is selected, the camera automatically detects a person's face, and it will adjust the focus and exposure. **(Face Detection)** (P75)

### **Note**

- Due to conditions such as the ones below, a different scene may be identified for the same subject.
  - Subject conditions: When the face is bright or dark, The size of the subject, The distance to the subject, The contrast of the subject, When the subject is moving
  - Recording conditions: Sunset, Sunrise, Under low brightness conditions, When the camera is shaken, When zoom is used
- To take pictures in an intended scene, it is recommended that you take pictures in the appropriate Recording Mode.
- **The Backlight Compensation**  
 Backlight refers to when light comes from the back of a subject.  
 In this case, the subject will become dark, so this function compensates the backlight by brightening the whole of the picture automatically.

## Settings Auto Scene Mode

- Only the following functions can be set in this mode.

**[REC] Mode menu**

– [PICTURE SIZE]\* (P70)/[BURST] (P76)/[COLOR MODE]\* (P77)/[STABILIZER] (P77)

- \* The settings which can be selected are different from when other [REC] Modes are used.

**[SETUP] menu**

– [CLOCK SET]/[WORLD TIME]/[BEEP]/[LANGUAGE]


- The settings of the following items are fixed.

Item	Settings
[SLEEP MODE] (P24)	[5MIN.]
[AUTO REVIEW] (P25)	[2SEC.]
FLASH (P43)	i/A/☺
[SENSITIVITY] (P71)	[ISO]
[WHITE BALANCE] (P72)	[AWB]
[AF MODE] (P74)	☺ (Set to [ ] when a face cannot be detected)
[AF ASSIST LAMP] (P78)	[ON]
[RED-EYE REMOVAL] (P78)	[ON]

- The following functions cannot be used.

– [EXPOSURE]/[DIGITAL ZOOM]


- The other items on the [SETUP] menu can be set in a mode such as the Normal Picture Mode. What is set will be reflected in the Auto Scene Mode.

[REC] Mode: 

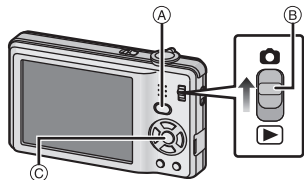
## Taking pictures with your favorite settings (Normal Picture Mode)

The camera automatically sets the shutter speed and the aperture value according to the brightness of the subject.

You can take pictures with greater freedom by changing various settings in the [REC] menu.

**1** Slide the [REC]/[PLAYBACK] selector switch to , and then press [MODE].

- (A) [MODE] button
- (B) [REC]/[PLAYBACK] selector switch



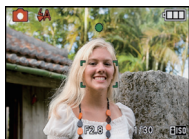
**2** Press  $\blacktriangle/\blacktriangledown$  to select [NORMAL PICTURE], and then press [MENU/SET].

- To change the setting while taking pictures, refer to “Using the [REC] Mode Menu” (P70).
- (C) [MENU/SET] button

**3** Aim the AF area at the point you want to focus on.

**4** Press the shutter button halfway to focus.

- The focus indication (green) lights when the subject is focused.
- The focus range is 50 cm (1.64 feet) (Wide)/ 70 cm (2.30 feet) (Tele) to  $\infty$ .
- If pictures are to be taken at an even closer range, refer to “Taking Close-up Pictures” (P48).



**5** Press the halfway pressed shutter button fully to take a picture.

- The access indication lights (P15) red when pictures are being recorded on the built-in memory (or the card).



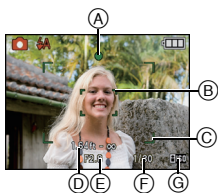
■ To adjust the exposure and take pictures at times when the image appears too dark (P50)

■ To adjust the colors and take pictures at times when the image appears too red (P72)



## Focusing

Aim the AF area at the subject, and then press the shutter button halfway.



Focus	When the subject is focused	When the subject is not focused
Focus indication	On	Blinks
AF area	White→Green	White→Red
Sound <sup>*2</sup>	Beeps 2 times	Beeps 4 times

- (A) Focus indication
- (B) AF area (normal)
- (C) AF area (when using the Digital Zoom or when it is dark)
- (D) Focus range
- (E) Aperture value<sup>\*1</sup>
- (F) Shutter speed<sup>\*1</sup>
- (G) ISO sensitivity

\*1 If correct exposure cannot be achieved, it will be displayed in red.

(However, it will not be displayed in red when the flash is used.)

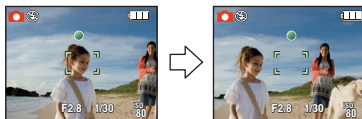
\*2 Sound volume can be set in [BEEP] (P23).

### When the subject is not in focus (such as when it is not in the center of the composition of the picture you want to take)

- 1** Aim the AF area at the subject, and then **press the shutter button halfway** to fix the focus and exposure.
- 2** **Press and hold the shutter button halfway** while moving the camera as you compose the picture.

• You can repeatedly retry the actions in step **1** before pressing the shutter button fully.

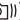
**We recommend that you use the Face Detection function when taking pictures of people. (P75)**



**■ Subject and recording conditions which are difficult to focus in**

- Fast-moving subjects, extremely bright subjects or subjects without contrast
- When the recordable range display has appeared in red
- When recording subjects through windows or near shiny objects
- When it is dark or when jitter occurs
- When the camera is too close to the subject or when taking a picture of both distant and near subjects

**Preventing jitter (camera shake)**

When the jitter alert [] appears, use a tripod or the self-timer (P49).

- Shutter speed will be slower particularly in the following cases. Keep the camera still from the moment the shutter button is pressed until the picture appears on the screen. We recommend using a tripod.
  - In [NIGHT PORTRAIT], [NIGHT SCENERY], [PARTY], [CANDLE LIGHT], [STARRY SKY] or [FIREWORKS] in Scene Mode (P51)

[REC] Mode:    

## Taking Pictures with the Zoom

### Using the Optical Zoom/Using the Extended Optical zoom (EZ)/Using the Digital Zoom

You can zoom-in to make people and objects appear closer or zoom-out to record landscapes in wide angle. To make subjects appear even closer (maximum of 7.8×), set the [PICTURE SIZE] to (8 MB) or less.

Even higher levels of magnification are possible when [DIGITAL ZOOM] is set to [ON] in [REC] menu.

To make subjects appear closer use (Tele)

Rotate the zoom lever towards Tele.




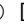



To make subjects appear further away use (Wide)

Rotate the zoom lever towards Wide.



#### ■ Types of zooms

Feature	Optical Zoom	Extended Optical Zoom (EZ)	Digital Zoom
Maximum magnification	4×	7.8×*	16× (including Optical Zoom 4×) 31.3× (including Extended Optical Zoom 7.8×)
Picture quality	No deterioration	No deterioration	The higher the magnification level, the greater the deterioration.
Conditions	None	[PICTURE SIZE] with  (P70) is selected.	[DIGITAL ZOOM] (P76) on the [REC] menu is set to [ON].
Screen display		 A  is displayed.	 B The Digital Zoom range is displayed.

• When using the Zoom function, an estimate of the focus range will appear in conjunction with the zoom display bar. [Example: 0.5 m (1.64 ft. -∞)]

\* The magnification level differs depending on [PICTURE SIZE] setting.

## ■ Extended Optical Zoom mechanism

When you set the Picture Size to [3M] (3 million pixels), the 12M (12.1 million pixels) CCD area is cropped to the center 3M (3 million pixels) area, allowing a picture with a higher zoom effect.




### Note

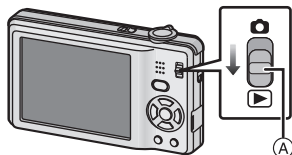
- The Digital Zoom cannot be set in Auto Scene Mode [A].
- The indicated zoom magnification is an approximation.
- "EZ" is an abbreviation of "Extended optical Zoom".
- The Optical Zoom is set to Wide (1×) when the camera is turned on.
- If you use the Zoom function after focusing on the subject, focus on the subject again.
- The lens barrel extends or retracts according to the zoom position. Take care not to interrupt the motion of the lens barrel while the zoom lever is rotated.
- When using the Digital Zoom, we recommend using a tripod and the self-timer (P49) for taking pictures.
- The Extended Optical Zoom cannot be used in the following cases.
  - In [HIGH SENS.], [HI-SPEED BURST] or [FLASH BURST] in Scene Mode
  - In Motion Picture Mode
- [DIGITAL ZOOM] cannot be used in the following cases.
  - In [HIGH SENS.], [HI-SPEED BURST] or [FLASH BURST] in Scene Mode

[PLAYBACK] Mode: 

## Playing back Pictures ([NORMAL PLAY])

### 1 Slide the [REC]/[PLAYBACK] selector switch (A) to .

- Normal Playback is set automatically in the following cases.
  - When the mode was switched from the [REC] to [PLAYBACK].
  - When the camera was turned on while the [REC]/[PLAYBACK] selector switch was at .



### 2 Press / to select the picture.


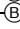
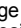
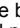
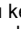
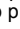
- ◀: Play back the previous picture
- ▶: Play back the next picture
- Speed of picture forwarding/rewinding changes depending on the playback status.

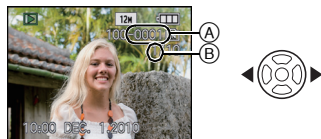
### ■ Fast forwarding/Fast rewinding

Press and hold /  during playback.

◀: Fast rewind

▶: Fast forward

- The file number  and the picture number  only change one by one. Release /  when the number of the desired picture appears to play back the picture.
- If you keep pressing / , the number of pictures forwarded/rewound increases.



## Displaying Multiple Screens (Multi Playback)

### Rotate the zoom lever towards [ ] (W).

1 screen → 12 screens → 30 screens → Calendar screen display (P85)

(A) Number of the selected picture and the total number of recorded pictures

- Rotate the zoom lever towards [Q] (T) to return to the previous screen.
- Pictures are not rotated for display.
- Pictures displayed using [ ] (W) cannot be played back.



### ■ To return to Normal Playback

#### 1 Press ▲/▼/◀/▶ to select a picture.

- An icon will be displayed depending on the recorded picture and the settings.

#### 2 Press [MENU/SET].

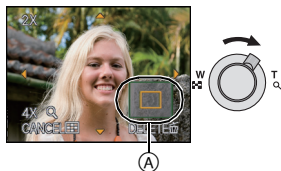
- The picture that was selected will appear.

## Using the Playback Zoom

### Rotate the zoom lever towards [Q] (T).

1× → 2× → 4× → 8× → 16×

- When you rotate the zoom lever towards [ ] (W) after enlarging the picture, the magnification becomes lower.
- When you change the magnification, the zoom position indication (A) appears for about 1 second, and the position of the enlarged section can be moved by pressing ▲/▼/◀/▶.
- The more a picture is enlarged, the more its quality deteriorates.
- When you move the position to be displayed, the zoom position indication appears for about 1 second.



### Note

- This camera complies with the DCF standard "Design rule for Camera File system" established by JEITA "Japan Electronics and Information Technology Industries Association" and with Exif "Exchangeable Image File Format". Files which do not comply with the DCF standard cannot be played back.
- The lens barrel retracts about 15 seconds after switching from [REC] Mode to [PLAYBACK] Mode.
- You cannot playback the audio of still pictures with audio recorded on other equipment.
- The Playback Zoom may not operate if pictures have been recorded with other equipment.
- Playback Zoom cannot be used during motion picture playback.

## Switching the [PLAYBACK] Mode

- 1 Press [MODE] during playback.
- 2 Press ▲/▼ to select the item and then press [MENU/SET].

**[NORMAL PLAY] (P37)**

All the pictures are played back.

**[SLIDE SHOW] (P80)**


The pictures are played back in sequence.

**[FAVORITE PLAY] (P83)\***

Your favorite pictures are played back.

\* [FAVORITE PLAY] is not displayed when [FAVORITE] has not been set.




[PLAYBACK] Mode: 

## Deleting Pictures

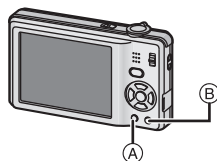
Once deleted, pictures cannot be recovered.


- Pictures on the built-in memory or the card, which are being played back will be deleted.

### To delete a single picture

- 1 Select the picture to be deleted, and then press .

- Ⓐ [DISPLAY] button
- Ⓑ  button





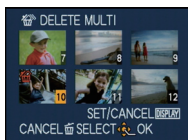
- 2 Press  to select [YES] and then press [MENU/SET].





## To delete multiple pictures (up to 50) or all the pictures

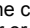
- 1 Press **[]**.
- 2 Press **▲/▼** to select **[DELETE MULTI]** or **[DELETE ALL]** and then press **[MENU/SET]**.
  - [DELETE ALL] → step 5.
- 3 Press **▲/▼/◀/▶** to select the picture, and then press **[DISPLAY]** to set. (Repeat this step.)
  - [] appears on the selected pictures. If [DISPLAY] is pressed again, the setting is canceled.
- 4 Press **[MENU/SET]**.
- 5 Press **▲** to select **[YES]** and then press **[MENU/SET]** to set.



### ■ When [DELETE ALL] has been selected with the [FAVORITE] (P91) setting

The selection screen is displayed again. Select [DELETE ALL] or [ALL DELETE EXCEPT ★], press **▲** to select [YES] and delete the pictures. ([ALL DELETE EXCEPT ★] cannot be selected if no pictures have been set as [FAVORITE].)

#### Note

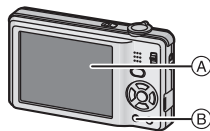
- Do not turn the camera off while deleting (while [] is displayed). Use a battery with sufficient battery power or the AC adaptor (optional) and DC coupler (optional).
- If you press [MENU/SET] while deleting pictures using [DELETE MULTI], [DELETE ALL] or [ALL DELETE EXCEPT ★], the deleting will stop halfway.
- Depending on the number of pictures to be deleted, it may take some time to delete them.
- If pictures do not conform to the DCF standard or are protected (P94), they will not be deleted even if [DELETE ALL] or [ALL DELETE EXCEPT ★] is selected.

## About the LCD Monitor

Press [DISPLAY] to change.

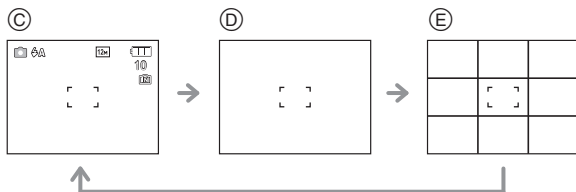
- Ⓐ LCD monitor
- Ⓑ [DISPLAY] button

- When the menu screen appears, the [DISPLAY] button is not activated. During Playback Zoom (P38), while playing back motion pictures (P84) and during a Slide Show (P80), you can only select "Normal display Ⓐ" or "No display Ⓐ".



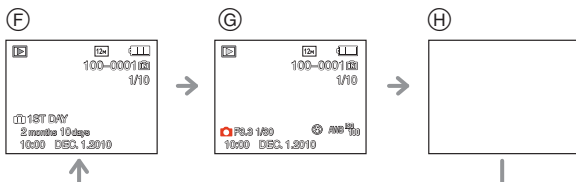
### In Recording Mode

- Ⓒ Normal display
- Ⓓ No display
- Ⓔ No display (Recording guideline)



### In Playback Mode

- Ⓕ Normal display
- Ⓖ Display with recording information
- Ⓖ No display



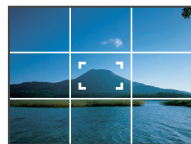
### Note




- In [NIGHT PORTRAIT], [NIGHT SCENERY], [STARRY SKY] and [FIREWORKS] in Scene Mode, the guideline is gray. (P51)

### Recording guideline

When you align the subject on the horizontal and vertical guidelines or the cross point of these lines, you can take pictures with well-designed composition by viewing the size, the slope and the balance of the subject.

This is used when dividing the entire screen into 3×3 for taking pictures with a well-balanced composition.

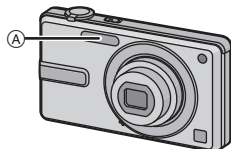


[REC] Mode:   

## Taking Pictures using the Built-in Flash

### Photo flash

Do not cover it with your fingers or other objects.


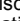


### Switching to the appropriate flash setting

Set the flash to match the recording.

**1** Press  [].

**2** Press / to select a mode.

- You can also press  [] to select.
- For information about flash settings that can be selected, refer to "Available flash settings by Recording Mode". (P45)

**3** Press [MENU/SET].

- You can also press the shutter button halfway to finish.
- The menu screen disappears after about 5 seconds. At this time, the selected item is automatically set.



Item	Description of settings
A: AUTO	The flash is automatically activated when the recording conditions make it necessary.
A : AUTO/Red-eye reduction*	The flash is automatically activated when the recording conditions make it necessary. It is activated once before the actual recording to reduce the red-eye phenomenon (eyes of the subject appearing red in the picture) and then activated again for the actual recording. • Use this when you take pictures of people in low lighting conditions.
: Forced flash ON : Forced ON/ Red-eye reduction*	The flash is activated every time regardless of the recording conditions. • <b>Use this when your subject is back-lit or under fluorescent lights.</b> • <b>The flash setting is set to [   ] only when you set [PARTY] or [CANDLE LIGHT] in Scene Mode. (P51)</b>
: Slow sync./ Red-eye reduction*	If you take a picture with a dark background, this feature will slow the shutter speed when the flash is activated so that the dark background will become bright. Simultaneously it reduces the red-eye phenomenon. • <b>The flash setting is set to [    ] only when you set [NIGHT PORTRAIT], [PARTY], [CANDLE LIGHT] in Scene Mode (P51).</b>
: Forced flash OFF	The flash is not activated in any recording conditions. • <b>Use this when you take pictures in places where the use of the flash is not permitted.</b>

- \* The flash is activated three times. The subject should not move until the third flash is activated. Interval until the third flash depends on the brightness of the subject. [RED-EYE REMOVAL] (P78) on the [REC] Mode menu is set to [ON], [] appears on the flash icon.

#### ■ About the digital red-eye correction

When [RED-EYE REMOVAL] (P78) has been set to [ON] and Red-Eye Reduction ([A], [ ], [ ]) is selected, Digital Red-Eye Correction is performed whenever the flash is used. The camera automatically detects red-eye and corrects the picture.

(Only available when [AF MODE] is set to []) and Face Detection is active)

- Under certain circumstances, red-eye cannot be corrected.
- In the following cases, Digital Red-Eye Correction does not work.
  - When the flash setting is set to [A], [] or [ ]
  - When [RED-EYE REMOVAL] is set to [OFF]
  - When [AF MODE] is set to anything except []

## ■ Available flash settings by Recording Mode

The available flash settings depend on the Recording Mode.

(○: Available, —: Not available, ●: Scene Mode initial setting)

	○*	—	—	—	—	○
	○	○	○	—	—	○
	○	●	○	—	—	○
	○	●	○	—	—	○
	○	●	○	—	—	○
	—	—	—	—	—	●
	●	—	○	—	—	○
	—	—	—	●	—	○
	—	—	—	—	—	●
	○	—	○	—	—	●
	—	—	—	●	○	○
	—	—	—	○	○	●
	○	●	○	—	—	○


	○	●	○	—	—	○
	○	—	○	—	—	●
	—	—	—	—	—	●
	○	—	○	—	—	●
	—	—	—	—	—	●
	—	—	●	—	—	—
	—	—	—	—	—	●
	—	—	—	—	—	●
	—	—	●	—	—	○
	●	—	○	—	—	○
	—	—	—	—	—	●
	—	—	—	—	—	○

\* When [] is selected, [], [] or [] is set depending on the type of subject and brightness.

- The flash setting may change if the Recording Mode is changed. Set the flash setting again if necessary.
- The flash setting is memorized even if the camera is turned off. However, the Scene Mode flash setting is reset to the initial setting when the Scene Mode is changed.

## ■ The available flash range to take pictures

- The available flash range is an approximation.

ISO sensitivity	Available flash range	
	Wide	Tele
 ISO	30 cm (0.98 feet) to 7.1 m (23.2 feet)	70 cm (2.30 feet) to 3.0 m (9.84 feet)
<b>ISO80</b>	30 cm (0.98 feet) to 1.5 m (4.92 feet)	70 cm (2.30 feet)
<b>ISO100</b>	30 cm (0.98 feet) to 1.7 m (5.58 feet)	70 cm (2.30 feet)
<b>ISO200</b>	40 cm (1.31 feet) to 2.5 m (8.20 feet)	70 cm (2.30 feet) to 1.1 m (3.61 feet)
<b>ISO400</b>	50 cm (1.64 feet) to 3.5 m (11.4 feet)	70 cm (2.30 feet) to 1.5 m (4.92 feet)
<b>ISO800</b>	70 cm (2.30 feet) to 5.0 m (16.4 feet)	70 cm (2.30 feet) to 2.1 m (6.89 feet)
<b>ISO1600</b>	1.1 m (3.61 feet) to 7.1 m (23.2 feet)	70 cm (2.30 feet) to 3.0 m (9.84 feet)

- The available focus range differs depending on the Recording Mode.
- The edge of the picture may appear dark if you shoot a very close subject with the flash while the zoom lever is close to the W side. Zoom in slightly if this occurs.
- In [HIGH SENS.] (P57) in Scene Mode, the ISO sensitivity automatically switches to between [ISO1600] and [ISO6400] and the available flash range also differs.

Wide:

Approx. 1.1 m (3.61 feet) to approx. 14.2 m (46.5 feet)

Tele:

Approx. 70 cm (2.30 feet) to approx. 6.1 m (20.0 feet)

- In [FLASH BURST] (P59) in Scene Mode, the ISO sensitivity automatically switches to between [ISO100] and [ISO1600] and the available flash range also differs.




Wide:



Approx. 30 cm (0.98 feet) to approx. 2.8 m (9.37 feet)


Tele:

Approx. 70 cm (2.30 feet) to approx. 1.2 m (4.04 feet)

## ■ Shutter speed for each flash setting

Flash setting	Shutter speed (Sec.)
	1/30 to 1/1000
	
	


Flash setting	Shutter speed (Sec.)
	1/8 to 1/1000
	1/8 to 1/1000*

\* When [] in [SENSITIVITY] is set [SPORTS], [BABY1]/[BABY2] and [PET] in Scene Mode

- In Auto Scene Mode, shutter speed changes depending on the identified scene.
- In Scene Mode, shutter speed will be different from the above table.

### Note

- If you bring the flash too close to an object, the object may be distorted or discolored by the heat or lighting from the flash.
- When you take a picture beyond the available flash range, the exposure may not be adjusted properly and the picture may become bright or dark.
- The White Balance may not be properly adjusted if the flash level is insufficient for the subject.
- When the shutter speed is fast, the flash effect may not be sufficient.
- It may take time to charge the flash if you repeat taking a picture. Take a picture after the access indication disappears.
- The red-eye reduction effect differs between people. Also, if the subject was far away from the camera or was not looking at the first flash, the effect may not be evident.

[REC] Mode: 

## Taking Close-up Pictures

This mode allows you to take close-up pictures of a subject, e.g. when taking pictures of flowers. You can take pictures of a subject as close as 20 cm (0.66 feet) from the lens by rotating the zoom lever upmost to Wide (1×).

### 1 Press .

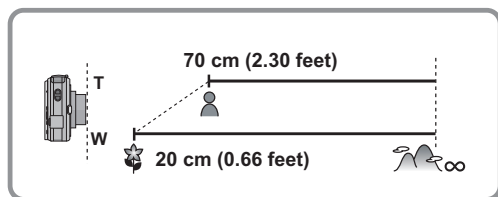
- In macro mode, [**AF**] is displayed. To cancel the Macro Mode, press  again.



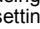
### 2 Press the shutter button halfway to focus and then press it fully to take the picture.

#### ■ Focus range



- \* The focus range changes in steps.



#### Note

- We recommend using a tripod and the self-timer.
- We recommend setting the flash to [] when you take pictures at close range.
- If the distance between the camera and the subject is beyond the focus range of the camera, the picture may not be properly focused even if the focus indication lights up.
- When a subject is close to the camera, the effective focus range is significantly narrowed. Therefore, if the distance between the camera and the subject is changed after focusing on the subject, it may become difficult to focus on it again.
- Macro Mode gives priority to a subject close to the camera. Therefore, if the distance between the camera and the subject is far, it takes longer to focus on it.
- When you take pictures at close range, the resolution of the periphery of the picture may decrease slightly. This is not a malfunction.



[REC] Mode:   SCN

## Taking Pictures with the Self-timer

**1** Press  [].



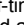
**2** Press / to select a mode.

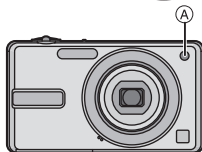
- You can also press  [] to select.

**3** Press [MENU/SET].

- You can also press the shutter button halfway to finish.
- The menu screen disappears after about 5 seconds. At this time, the selected item is automatically set.




**4** Press the shutter button halfway to focus and then press it fully to take the picture.

- The self-timer indicator  blinks and the shutter is activated after 10 seconds (or 2 seconds).
- If you press [MENU/SET] while the self-timer is set, the self-timer setting is canceled.



### Note

- When using a tripod etc., setting the self-timer to 2 seconds is a convenient way to avoid the jitter caused by pressing the shutter button.
- When you press the shutter button once fully, the subject is automatically focused just before recording. In dark places, the self-timer indicator will blink and then may turn on brightly operating as an AF assist lamp (P78) to allow the camera to focus on the subject.
- We recommend using a tripod when recording with the self-timer.
- The number of pictures which can be taken in [BURST] is fixed to 2.
- The number of pictures which can be taken in [FLASH BURST] in Scene Mode is fixed to 5.
- Self-timer cannot be set to 10 seconds in [SELF PORTRAIT] in Scene Mode.
- Self-timer cannot be used while in [HI-SPEED BURST] in Scene Mode.

[REC] Mode:   

## Compensating the Exposure

Use this function when you cannot achieve appropriate exposure due to the difference in brightness between the subject and the background. Look at the following examples.

**Underexposed**



Compensate the exposure towards positive.

**Properly exposed**



**Overexposed**



Compensate the exposure towards negative.

**1** Press   until [EXPOSURE] appears, compensate the exposure with / .

- Select [0 EV] to return to the original exposure.



**2** Press [MENU/SET] to finish.

- You can also press the shutter button halfway to finish.

### Note

- EV is an abbreviation of [Exposure Value]. It refers to the amount of light given to the CCD by the aperture value and the shutter speed.
- The exposure compensation value appears on the lower left of the screen.
- The set exposure value is memorized even if the camera is turned off.
- The compensation range of the exposure will be limited depending on the brightness of the subject.
- Exposure compensation cannot be used when in [STARRY SKY] in Scene Mode.

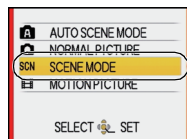
[REC] Mode: **SCN**

## Taking pictures that match the scene being recorded (Scene Mode)

When you select a Scene Mode to match the subject and recording situation, the camera sets the optimal exposure and hue to obtain the desired picture.

**1** Slide the [REC]/[PLAYBACK] selector switch to **[📷]**, and then press **[MODE]**.

**2** Press **▲/▼** to select **[SCENE MODE]**, and then press **[MENU/SET]**.



**3** Press **▲/▼/◀/▶** to select the Scene Mode.

- You can switch menu screens from any menu item by rotating the zoom lever.

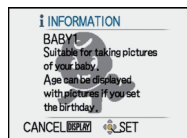
**4** Press **[MENU/SET]** to set.

- The menu screen is switched to the recording screen in the selected Scene Mode.



### ■ About the information ⓘ

- If you press [DISPLAY] when selecting a Scene Mode, explanations about each Scene Mode are displayed. (If you press [DISPLAY] again, the screen returns to the Scene Mode menu.)



### 📌 Note

- To change the Scene Mode, press [MENU/SET] and then press **▶**, and return to step **3**.
- The Scene Mode flash setting is reset to the initial setting when the Scene Mode is changed.
- When you take a picture with a Scene Mode that is not adequate for the purpose, the hue of the picture may differ from the actual scene.
- The following items cannot be set in Scene Mode because the camera automatically adjusts them to the optimal setting.
  - [SENSITIVITY]
  - [COLOR MODE]

## [PORTRAIT]


When taking pictures of people outdoors during the daytime, this mode allows you to improve the appearance and make their skin tones look healthier.

### ■ Technique for Portrait Mode

To make this mode more effective:

- 1 Rotate the zoom lever as far as possible to Tele.
- 2 Move close to the subject to make this mode more effective.

#### Note

- The initial setting for [AF MODE] is .

## [SOFT SKIN]


When taking pictures of people outdoors during the daytime, this mode enables the texture of their skin to appear even softer than with [PORTRAIT]. (It is effective when taking pictures of people from the chest up.)

### ■ Technique for Soft Skin Mode

To make this mode more effective:

- 1 Rotate the zoom lever as far as possible to Tele.
- 2 Move close to the subject to make this mode more effective.

#### Note

- If a part of the background etc. is a color close to skin color, this part is also smoothed.
- This mode may not be effective when there is insufficient brightness.
- The initial setting for [AF MODE] is .

**[SELF PORTRAIT]**

Select this to take pictures of yourself.

**■ Technique for Self Portrait Mode**

- Press the shutter button halfway to focus. The self-timer indicator lights up when you are brought into focus. Making sure you hold the camera still, press the shutter button fully to take the picture.
- The subject is not focused when the self-timer indicator is blinking. Make sure to press the shutter button halfway again to focus.
- The recorded picture automatically appears on the LCD monitor for reviewing.
- If the picture is blurry due to the slow shutter speed, we recommend using the 2 second self-timer.

**Note**

- The focus range is about 30 cm (0.98 feet) to 1.2 m (4.04 feet) (Wide).
- The zoom magnification is automatically moved to Wide (1×).
- The self-timer can only be set to off or 2 seconds. If it is set to 2 seconds, this setting will remain until the camera is turned off, the Scene Mode is changed or [REC] Mode or [PLAYBACK] Mode is selected.
- The initial setting for [AF MODE] is [∞].

**[SCENERY]**

This allows you to take pictures of a wide landscape.

**Note**

- **The flash setting is fixed to [☺].**
- The focus range is 5 m (16.4 feet) to ∞.

**[SPORTS]**

Set here when you want to take pictures of sports scenes or other fast-moving events.

**Note**

- This mode is suitable for taking pictures of subjects at distances of 5 m (16.4 feet) or more.
- [F1S0] in [SENSITIVITY] is activated, and maximum ISO sensitivity level becomes [ISO1600].

**[NIGHT PORTRAIT]**

This allows you to take pictures of a person and the background with near real-life brightness.

**■ Technique for Night Portrait Mode**

- **Use the flash.** (You can set to [⚡ⓈⓄ].)
- Ask the subject not to move while taking a picture.
- We recommend rotating the zoom lever to Wide (1×) and being about 1.5 m (4.92 feet) from the subject when taking a picture.

**Note**

- The focus range is 60 cm (1.97 feet) (Wide)/1.2 m (4.04 feet) (Tele) to 5 m (16.4 feet).
- We recommend using a tripod and the self-timer for taking pictures.
- Noise may become visible when you take pictures in dark places.
- The initial setting for [AF MODE] is [Ⓜ].

**[NIGHT SCENERY]**

This allows you to take vivid pictures of the nightscape.

**Note**

- **The flash setting is fixed to [Ⓢ].**
- The focus range is 5 m (16.4 feet) to ∞.
- We recommend using a tripod and the self-timer for taking pictures.
- The shutter may remain closed (max. about 8 sec.) after taking the picture because of signal processing. This is not a malfunction.
- Noise may become visible when you take pictures in dark places.

**[FOOD]**

This mode allows you to take pictures of food with a natural hue without being affected by the ambient light in restaurants etc.



**Note**

- The focus range is 20 cm (0.66 feet) (Wide)/70 cm (2.30 feet) (Tele) to ∞.


## [PARTY]

Select this when you want to take pictures at a wedding reception, an indoor party etc. This allows you to take pictures of people and the background with near real-life brightness.

### ■ Technique for Party Mode

- Use the flash. (You can set to [  ] or [  ].)
- We recommend using a tripod and the self-timer for taking pictures.
- We recommend rotating the zoom lever to Wide (1×) and being about 1.5 m (4.92 feet) from the subject when taking pictures.

#### Note

- The initial setting for [AF MODE] is [].


## [CANDLE LIGHT]

This mode allows you to take pictures with a candle-lit atmosphere.

### ■ Technique for Candle Light Mode

- This is more effective when taking pictures without using the flash.

#### Note

- The focus range is 20 cm (0.66 feet) (Wide)/70 cm (2.30 feet) (Tele) to ∞.
- We recommend using a tripod and the self-timer for taking pictures.
- The initial setting for [AF MODE] is [].

**[BABY1]/[BABY2]**

This takes pictures of a baby with a healthy complexion. When you use the flash, the light from it is weaker than usual.

It is possible to set different birthdays and names for [BABY1] and [BABY2]. You can select to have these appear at the time of playback, or have them stamped on the recorded image using [TEXT STAMP] (P86).

### ■ Birthday/Name setting

- 1 Press ▲/▼ to select [AGE] or [NAME] and then press ►.
- 2 Press ▲/▼ to select [SET] and then press [MENU/SET].
- 3 Enter the birthday or name.

Birthday:

◀/▶: Select the items (year/month/day).

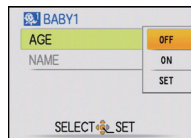
▲/▼: Set.

[MENU/SET]: Exit.

Name: For details on how to enter characters, refer to "Entering Text" on P79.

- When the birthday or name is set, [AGE] or [NAME] is automatically set to [ON].
- If [ON] is selected when the birthday or name has not been registered, the setting screen appears automatically.

- 4 Press [MENU/SET] to finish.



### ■ To cancel [AGE] and [NAME]

Select the [OFF] setting in step 2 of the "Birthday/Name setting" procedure.

### ● Note

- The age and name can be printed out using the "PHOTOfunSTUDIO" bundled software on the CD-ROM (supplied).
- If [AGE] or [NAME] is set to [OFF] even when the birthday or name has been set, the age or name will not be displayed. Before taking pictures, set [AGE] or [NAME] to [ON].
- The focus range is 20 cm (0.66 feet) (Wide)/70 cm (2.30 feet) (Tele) to ∞.
- If [ISO] in [SENSITIVITY] is activated, and maximum ISO sensitivity level becomes [ISO1600].
- If the camera is turned on with [BABY1]/[BABY2] set, the age and name are displayed at the lower left of the screen for about 5 seconds, along with the current date and time.
- If the age is not properly displayed, check the clock and birthday settings.
- The birthday setting and name setting can be reset with [RESET].
- The initial setting for [AF MODE] is [☺].



**[PET]**

Select this when you want to take pictures of a pet such as a dog or a cat. You can set your pet's birthday and name. You can select to have these appear at the time of playback, or have them stamped on the recorded image using [TEXT STAMP] (P86).

For information about [AGE] or [NAME], refer to [BABY1]/[BABY2] on P56.


 **Note**

- The initial setting for the AF Assist Lamp is [OFF].
- The initial setting for [AF MODE] is [].
- Refer to [BABY1]/[BABY2] for other information about this mode.

**[SUNSET]**

Select this when you want to take pictures of a sunset view. This allows you to take vivid pictures of the red color of the sun.



 **Note**

- **The flash setting is fixed to .**
- ISO sensitivity is fixed to [ISO80].

**[HIGH SENS.]**

This mode minimizes the jitter of the subjects, and enables you to take pictures of these subjects in dimly lit rooms. (Select this for high-sensitivity processing. The Sensitivity automatically switches to between [ISO1600] and [ISO6400].)

**Picture Size**

- 1 Press / to select the Picture Size and then press [MENU/SET] to set.**
  - 3M (4:3), 2.5M (3:2) or 2M (16:9) is selected as the Picture Size.
- 2 Take pictures.**

 **Note**

- You can take pictures suitable for 4"×6"/10×15 cm printing.
- The focus range is 20 cm (0.66 feet) (Wide)/70 cm (2.30 feet) (Tele) to ∞.

**[HI-SPEED BURST]**

This is a convenient mode for shooting rapid movement or a decisive moment.

**■ Picture Size**

**1 Press ▲/▼ to select the Picture Size and then press [MENU/SET] to set.**

- 3M (4:3), 2.5M (3:2) or 2M (16:9) is selected as the Picture Size.

**2 Take pictures.**

- Still pictures are taken continuously while the shutter button is pressed fully.

<b>Maximum Burst speed</b>	approx. 6 pictures/second
<b>Number of recordable pictures</b>	max. 20 pictures

- The burst speed changes according to the recording conditions.
- The number of burst recording pictures are limited by the picture-taking conditions and the type and/or status of the card used.
- The number of burst recording pictures increases immediately after formatting.

**Note**

• **The flash setting is fixed to [☺].**

- You can take pictures suitable for 4"×6"/10×15 cm printing.
- The shutter speed becomes 1/8th of a second to 1/1000th of a second.
- The focus range is 20 cm (0.66 feet) (Wide)/70 cm (2.30 feet) (Tele) to ∞.
- The focus, zoom, exposure, white balance, shutter speed and ISO sensitivity are fixed to the settings for the first picture.
- Depending on the operating conditions, it may take time to take the next picture.
- The battery will run out faster in [HI-SPEED BURST] mode than in Normal Mode.

**[FLASH BURST]**

Still pictures are taken continuously with the flash. It is convenient to take continuous still pictures in dark places.

**Picture Size**

**1 Press ▲/▼ to select the Picture Size and then press [MENU/SET] to set.**

- 3M (4:3), 2.5M (3:2) or 2M (16:9) is selected as the Picture Size.

**2 Take pictures.**

- Still pictures are taken continuously while the shutter button is pressed fully.

<b>Number of recordable pictures</b>	max. 5 pictures
--------------------------------------	-----------------

**Note**

- You can take pictures suitable for 4"×6"/10×15 cm printing.
- The focus range is 20 cm (0.66 feet) (Wide)/70 cm (2.30 feet) (Tele) to ∞.
- The focus, zoom, exposure, shutter speed, ISO sensitivity, and flash level are fixed to the settings for the first picture.
- The shutter speed becomes 1/30th of a second to 1/1000th of a second.
- [ISO] in [SENSITIVITY] is activated, and maximum ISO sensitivity level becomes [ISO1600].
- See the Note on P47 when using the flash.

## [STARRY SKY]

This allows you to take vivid pictures of a starry sky or a dark subject.

### ■ Setting the shutter speed

Select a shutter speed of [15 SEC.], [30 SEC.] or [60 SEC.].

#### 1 Press ▲/▼ to select the number of seconds and then press [MENU/SET].

- It is also possible to change the number of seconds using the quick menu. (P22)

#### 2 Take pictures.

- Press the shutter button fully to display the countdown screen. Do not move the camera after this screen is displayed. When countdown finishes, [PLEASE WAIT...] is displayed for the same length of time as the set shutter speed for signal processing.
- Press [MENU/SET] to stop taking the picture while the countdown screen is displayed.



### ■ Technique for Starry Sky Mode

- The shutter opens for 15, 30 or 60 seconds. Be sure to use a tripod. We also recommend taking pictures with the self-timer.



#### Note

- The flash setting is fixed to [☹].
- ISO sensitivity is fixed to [ISO80].

## [FIREWORKS]

This mode allows you to take beautiful pictures of fireworks exploding in the night sky.

### ■ Technique for Fireworks Mode

- Since the shutter speed becomes slower, we recommend using a tripod.




#### Note

- The flash setting is fixed to [☹].
- This mode is most effective when the subject is 10 m (32.8 feet) or more away.
- The shutter speed becomes 1/4th of a second.
- The AF area is not displayed.
- ISO sensitivity is fixed to [ISO80].

## [BEACH]

This allows you to take even more vivid pictures of the blue color of the sea, sky etc. It also prevents underexposure of people under strong sunlight.

### Note

- The initial setting for [AF MODE] is [].
- Do not touch the camera with wet hands.
- Sand or seawater will cause the camera to malfunction. Make sure that sand or seawater does not get onto the lens or in the terminals.
- Problems caused by sand, seawater and fresh water are not covered by the product warranty.

## [SNOW]

This allows you to take pictures that show the snow as white as possible at a ski resort or a snow-covered mountain.


## [AERIAL PHOTO]


This mode allows you to take pictures through an airplane window.

### ■ Technique for Aerial Photo Mode




- We recommend using this technique if it is difficult to focus when taking pictures of clouds etc. Aim the camera at something with high contrast, press the shutter button halfway to fix the focus and then aim the camera at the subject and press the shutter button fully to take the picture.

### Note

- **The flash setting is fixed to [].**
- The focus range is 5 m (16.4 feet) to  $\infty$ .
- **Turn the camera off when taking off or landing.**
- **When using the camera, follow all instructions from the cabin crew.**
- Be careful about the reflection from the window.

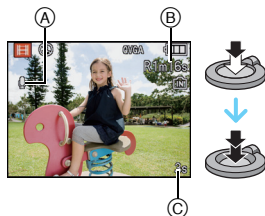
[REC] Mode: 

## Motion Picture Mode

- 1 Slide the [REC]/[PLAYBACK] selector switch to , and then press [MODE].
- 2 Press / to select [MOTION PICTURE], and then press [MENU/SET].
- 3 Press the shutter button halfway to focus and then press it fully to start recording.

**(A) Audio recording**

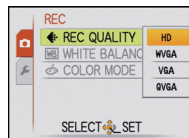
- The available recording time **(B)** is displayed on the top right and the elapsed recording time **(C)** is displayed on the bottom right of the screen.
- After pressing the shutter button fully, release it straight away.
- When the subject is focused, the focus indication lights.
- The focus and zoom are fixed to the setting when recording starts (the first frame).
- The audio is also recorded simultaneously from the built-in microphone on this unit. (Motion pictures cannot be recorded without audio.)



- 4 Press the shutter button fully to stop recording.
  - If the built-in memory or the card becomes full in the middle of recording, the camera stops recording automatically.

## Changing the settings for the Recording Quality

- 1** Press [MENU/SET].
- 2** Press ▲/▼ to select [REC QUALITY] and then press ►.
- 3** Press ▲/▼ to select the item and then press [MENU/SET].



Item	Picture Size	fps	Aspect Ratio
HD *	1280×720 pixels	30	16:9
WVGA *	848×480 pixels	30	
VGA *	640×480 pixels	30	4:3
QVGA	320×240 pixels	30	

\*Cannot be recorded in the built-in memory.

- 4** Press [MENU/SET] to close the menu.
  - You can also press the shutter button halfway to close the menu.

**Note**

- **The flash setting is fixed to [☺].**
- Use a card with SD Speed Class\* with “Class 6” or higher when recording motion pictures.
  - \* SD speed class is the speed standard regarding continuous writing.
- Refer to P129 for information about the available recording time.
- The available recording time displayed on the screen may not decrease regularly.
- Depending on the type of the card, the card access indication may appear for a while after recording motion pictures. This is not a malfunction.
- When motion pictures recorded with the camera are played back on other equipment, the quality of the picture and sound may deteriorate and it may not be possible to play them back. Also the recording information may not be displayed correctly.
- Motion pictures recorded by this camera cannot be played back by older models of Panasonic digital cameras (LUMIX) launched before December 2009.
- In Motion Picture Mode, the following functions cannot be used.
  - [👁] and [■] in [AF MODE]
- [DIGITAL ZOOM] and [AF ASSIST LAMP] cannot be set in Motion Picture Mode. Setting of other recording mode will be reflected.
- In Motion Picture Mode, the angle of view may become narrower than in Normal Picture Mode.
- We recommend you use a battery with sufficient battery power or the AC adaptor when recording motion pictures.
- If while recording motion pictures using the AC adaptor and the power supply is cut off due to a power outage or if the AC adaptor is disconnected etc., the motion picture being recorded will not be recorded.
- Sound of operation may be recorded when button or other operations are performed during motion picture recording.
- Be careful not to block the microphone in front of the camera during motion picture recording.



[REC] Mode:    

## Useful Functions at Travel Destinations

### Recording which Day of the Vacation You Take the Picture

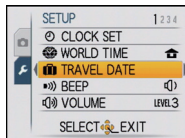
For details on the [SETUP] menu settings, refer to P20.

If you set the departure date or the travel destination of the vacation in advance, the number of days that have passed since the departure date is recorded when you take the picture. You can display the number of days that have passed when playing back the pictures and stamp it on the recorded pictures with [TEXT STAMP] (P86).

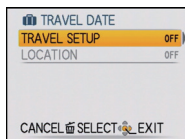
- The number of days that have passed since the departure date can be printed out using the "PHOTOfunSTUDIO" bundled software on the CD-ROM (supplied).

- Select [CLOCK SET] to set the current date and time in advance. (P17)

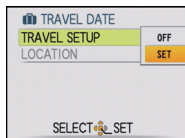
- 1 Select [TRAVEL DATE] from the [SETUP] menu, and then press **▶**.



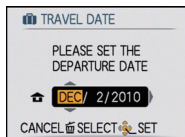
- 2 Press **▲** to select [TRAVEL SETUP] and then press **▶**.



- 3 Press **▼** to select [SET] and then press [MENU/SET].

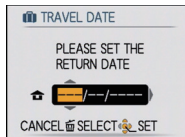


- 4 Press **▲/▼/◀/▶** to set the departure date (year/month/day), and then press [MENU/SET].

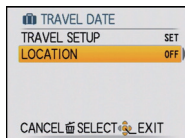


- 5 Press **▲/▼/◀/▶** to set the return date (year/month/day), and then press [MENU/SET].

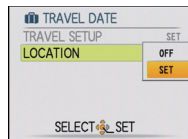
- If you do not want to set the return date, press [MENU/SET] while the date bar is displayed.



- 6 Press **▼** to select [LOCATION] and then press **▶**.



- 7** Press ▼ to select [SET] and then press [MENU/SET].




- 8** Enter the location.

- For details on how to enter characters, refer to “Entering Text” on [P79](#).

- 9** Press [MENU/SET] twice to close the menu.

- 10** Take a picture.

- The number of days that have passed since the departure date is displayed for about 5 seconds if this unit is turned on etc. after setting the Travel Date or when the Travel Date is set.
- When the Travel Date is set,  appears on the lower right of the screen.

## ■ Canceling the Travel Date

The Travel Date is automatically canceled if the current date is after the return date. If you want to cancel the Travel Date before the end of the vacation, select [OFF] on the screen shown in step **3** or **7** and then press [MENU/SET] twice. If the [TRAVEL SETUP] is set to [OFF] in step **3**, [LOCATION] will be also set to [OFF].

### Note

- The Travel Date is calculated using the date in the clock setting and the departure date you set. If you set [WORLD TIME] (P68) to the travel destination, the Travel Date is calculated using the date in the clock setting and the travel destination setting.
- The Travel Date setting is memorized even if the camera is turned off.
- If [TRAVEL DATE] is set to [OFF], the number of days that have passed since the departure date will not be recorded. Even if [TRAVEL DATE] is set to [SET] after taking the pictures, which day of the vacation you took them is not displayed.
- If you set a departure date and then take a picture on a date before this departure date, [-] (minus) is displayed in orange and the day of the vacation that you took the picture is not recorded.
- If the Travel Date is displayed as [-] (minus) in white, there is a time difference that involves date change between the [HOME] and [DESTINATION]. (It will be recorded)
- [LOCATION] cannot be recorded when taking motion pictures.
- Auto Scene Mode cannot be set. Setting of other Recording Mode will be reflected.

## Recording Dates/Times at Overseas Travel Destinations (World Time)

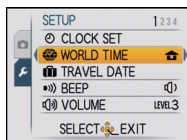
For details on the [SETUP] menu settings, refer to P20.

You can display the local times at the travel destinations and record them on the pictures you take.

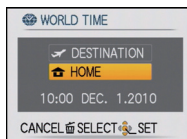
• Select [CLOCK SET] to set the current date and time in advance. (P17)

**1** Select [WORLD TIME] from the [SETUP] menu, and then press **▶**.

- When first using the camera after purchasing it, the [PLEASE SET THE HOME AREA] message appears. Press [MENU/SET], and set the home area on the screen in step 3.

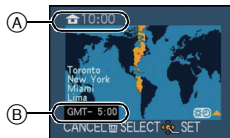


**2** Press **▼** to select [HOME], and then press [MENU/SET].



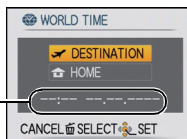
**3** Press **◀/▶** to select the home area, and then press [MENU/SET].

- (A) Current time
- (B) Time difference from GMT (Greenwich Mean Time)
- If daylight saving time [☀️] is used at the home area, press **▲**. Press **▲** again to return to the original time.
- The daylight saving time setting for the home area does not advance the current time. Advance the clock setting by one hour.



**4** Press **▲** to select [DESTINATION] and then press [MENU/SET] to set.

- (C) Depending on the setting, the time at the travel destination area or the home area is displayed.




**5** Press **◀/▶** to select the area the travel destination is in and then press [MENU/SET] to set.

- (D) Current time of the destination area
- (E) Time difference
- If daylight saving time [☀️] is used at the travel destination, press **▲**. (The time advances by one hour.) Press **▲** again to return to the original time.



**6** Press [MENU/SET] to close the menu.

 **Note**

- Return the setting to [HOME] when the vacation is finished by performing steps **1**, **2** and **3**.
- If [HOME] is already set, change only the travel destination, and use.
- If you cannot find the travel destination in the areas displayed on the screen, set by the time difference from the home area.
- The travel destination icon  appears when playing back pictures taken at the travel destination.

## Using the [REC] Mode Menu

### [PICTURE SIZE]

For details on [REC] Mode menu settings, refer to P20.

Set the number of pixels. The higher the numbers of pixels, the finer the detail of the pictures will appear even when they are printed onto large sheets.

Applicable modes: **[A]** **[SCN]**

\* This item cannot be set in the Auto Scene Mode.

<b>[4:3]</b> <b>[12M]</b>	4000×3000 pixels
<b>[4:3]</b> <b>[8M]</b> <b>[EZ]*</b>	3264×2448 pixels
<b>[4:3]</b> <b>[5M]</b> <b>[EZ]</b>	2560×1920 pixels
<b>[4:3]</b> <b>[3M]</b> <b>[EZ]*</b>	2048×1536 pixels
<b>[4:3]</b> <b>[0.3M]</b> <b>[EZ]</b>	640×480 pixels
<b>[3:2]</b> <b>[10.5M]</b>	4000×2672 pixels
<b>[16:9]</b> <b>[9M]</b>	4000×2248 pixels

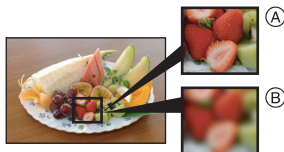
**[4:3]**: [ASPECT RATIO] of a 4:3 TV

**[3:2]**: [ASPECT RATIO] of a 35 mm film camera

**[16:9]**: [ASPECT RATIO] of a high-definition TV, etc.

#### Note


- “EZ” is an abbreviation of “Extended optical Zoom”.
- A digital picture is made of numerous dots called pixels. The higher the numbers of pixels, the finer the picture will be when it is printed on a large piece of paper or displayed on a PC monitor.
  - (A) Many pixels (Fine)
  - (B) Few pixels (Rough)
- \* These pictures are examples to show the effect.
- The Extended Optical Zoom does not work in [HIGH SENS.], [HI-SPEED BURST] and [FLASH BURST] in Scene Mode so the Picture Size for [EZ] is not displayed.
- Pictures may appear mosaic depending on the subject and the recording conditions.
- Refer to P128 for information about the number of recordable pictures.





## [SENSITIVITY]

For details on [REC] Mode menu settings, refer to P20.


This allows the Sensitivity to light (ISO sensitivity) to be set. Setting to a higher figure enables pictures to be taken even in dark places without the resulting pictures coming out dark.

Applicable modes: 

[ ISO]/[80]/[100]/[200]/[400]/[800]/[1600]

ISO sensitivity	80   1600	
Recording location (recommended)	When it is light (outdoors)	When it is dark
Shutter speed	Slow	Fast
Noise	Less	Increased




 **Note**

- When setting to [ ISO], the camera detects movement of the subject and then sets the optimal ISO sensitivity and shutter speed according to movement and brightness of the subject.
- To avoid picture noise, we recommend that you either reduce the ISO sensitivity level or set [COLOR MODE] to [NATURAL], and then take pictures. (P77)
- The ISO sensitivity automatically changes between [ISO1600] and [ISO6400] in [HIGH SENS.] in Scene Mode.

## [WHITE BALANCE]

For details on [REC] Mode menu settings, refer to P20.

In sunlight, under incandescent lights or in other such conditions where the color of white takes on a reddish or bluish tinge, this item adjusts to the color of white which is closest to what is seen by the eye in accordance with the light source.

Applicable modes:   

[AWB]: Automatic adjustment

: When taking pictures outdoors under a clear sky

: When taking pictures outdoors under a cloudy sky


: When taking pictures outdoors in the shade

: When taking pictures under incandescent lights

: Value set by using SET]

SET]: Set manually

 **Note**

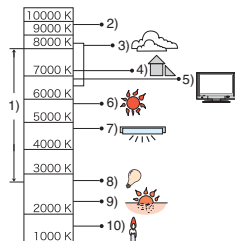
- The Optimal White Balance will differ depending on the type of halogen lighting being recorded under so use [AWB] or SET].
- The White Balance setting is memorized even if the camera is turned off. (However, the White Balance setting for a Scene Mode returns to [AWB] when the Scene Mode is changed.)
- In the Scene Modes listed below, White Balance is fixed to [AWB].
  - [SCENERY]/[NIGHT PORTRAIT]/[NIGHT SCENERY]/[FOOD]/[PARTY]/[CANDLE LIGHT]/[SUNSET]/[FLASH BURST]/[STARRY SKY]/[FIREWORKS]/[BEACH]/[SNOW]/[AERIAL PHOTO]



## ■ Auto White Balance

Depending on the conditions prevailing when pictures are taken, the pictures may take on a reddish or bluish tinge. Furthermore, when a multiple number of light sources are being used or there is nothing with a color close to white, Auto White Balance may not function properly. In a case like this, set the White Balance to a mode other than [AWB].

- 1 Auto White Balance will work within this range.
  - 2 Blue sky
  - 3 Cloudy sky (Rain)
  - 4 Shade
  - 5 TV screen
  - 6 Sunlight
  - 7 White fluorescent light
  - 8 Incandescent light bulb
  - 9 Sunrise and sunset
  - 10 Candlelight
- K=Kelvin Color Temperature



## ■ Setting the White Balance manually

- 1 Select [MENU/SET] and then press [MENU/SET].
- 2 Aim the camera at a sheet of white paper etc. so that the frame in the center is filled by the white object only and then press [MENU/SET].

- White Balance may not be set correctly when the subject is too bright or too dark. Set the White Balance again after adjusting to appropriate brightness.






## [AF MODE]




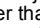
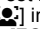
For details on [REC] Mode menu settings, refer to P20.

This allows the appropriate focusing method to be selected.

Applicable modes:  

 : Face Detection	The camera automatically detects the person's face. The focus and exposure can then be adjusted to fit that face no matter what portion of the picture it is in. (max. 15 areas)
 : 9-area-focusing	The camera focuses on any of 9 focus areas. This is effective when the subject is not in the center of the screen.
 : 1-area-focusing	The camera focuses on the subject in the AF area on the center of the screen.

 **Note**

- The camera is focusing on all the AF areas when multiple AF areas (max. 9 areas) light at the same time in . If you want to determine the focus position to take pictures, switch the AF Mode to .
- If the AF Mode is set to , the AF area is not displayed until the picture is brought into focus.
- The camera may detect subjects other than a person as the face. In this case, switch the AF Mode to any modes other than  and then take a picture.
- The AF Mode cannot be set in [FIREWORKS] in Scene Mode.
- It is not possible to set  in the following cases.
  - In [NIGHT SCENERY], [FOOD], [STARRY SKY] and [AERIAL PHOTO] in Scene Mode.

## ■ About [👤] (Face Detection)

The following AF area frames are displayed when the camera detects the faces.

Yellow:

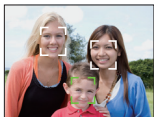
When the shutter button is pressed halfway, the frame turns green when the camera is focused.

White:

Displayed when more than one face is detected. Other faces that are the same distance away as faces within the yellow AF areas are also brought into focus.

• Under certain picture-taking conditions including the following cases, the facial recognition function may fail to work. [AF MODE] is switched to [📏].

- When the face is not facing the camera
- When the face is at an angle
- When the face is extremely bright or dark
- When there is little contrast on the faces
- When the facial features are hidden behind sunglasses, etc.
- When the face appears small on the screen
- When there is rapid movement
- When the subject is not a human being
- When the camera is shaking
- When Digital Zoom is used




**[BURST]**

For details on [REC] Mode menu settings, refer to P20.

Pictures are taken continuously while the shutter button is pressed.

Select the ones you really like from among the pictures you have taken.

Applicable modes:   


[OFF], 

Burst speed (pictures/second)	approx. 1.0
Number of recordable pictures	Depends on the remaining capacity of the built-in memory/card.

- The burst speed values given above apply when the shutter speed is 1/60 or faster.

 **Note**



• **About [BURST]**

- **The burst speed becomes slower halfway.** The exact timing of this depends on the type of card and the Picture Size.
- You can take pictures until the capacity of the built-in memory or the card is full.
- The focus is fixed when the first picture is taken.
- The exposure and White Balance are adjusted each time you take a picture.
- When the self-timer is used, the number of recordable pictures in Burst Mode is fixed to 2.
- If you are following a moving subject while taking pictures in a place indoors, outdoors etc. where there is a large difference between the light and shade, the exposure may not become optimal.
- The burst speed (pictures/second) may become slower depending on the recording environment such as in dark places, if the ISO sensitivity is high etc.
- Burst Mode is not canceled when the camera is switched off.
- If you take pictures in Burst Mode with the built-in memory, it will take time to write the picture data.
-  **is set for the flash when Burst is set.**
- Burst cannot be used in [HI-SPEED BURST], [FLASH BURST] or [STARRY SKY] in Scene Mode.

**[DIGITAL ZOOM]**

For details on [REC] Mode menu settings, refer to P20.

This can enlarge subjects even more than the Optical Zoom or Extended Optical Zoom.

Applicable modes:  

[OFF]/[ON]

 **Note**

- Refer to P35 for details.
- [DIGITAL ZOOM] cannot be set in Motion Picture Mode. Setting of other recording mode will be reflected.

**[COLOR MODE]**

For details on [REC] Mode menu settings, refer to P20.

Using these modes, the pictures can be made sharper or softer, the colors of the pictures can be turned into sepia colors or other color effects can be achieved.

Applicable modes:   

**[STANDARD]:** This is the standard setting.

**[NATURAL]:** The picture becomes softer.

**[VIVID]:** The picture becomes sharper.

**[B/W]:** The picture becomes black and white.

**[SEPIA]:** The picture becomes sepia.

**[COOL]:** The picture becomes bluish.

**[WARM]:** The picture becomes reddish.

 **Note**

- When you take pictures in dark places, noise may become visible. To avoid noise, we recommend setting to [NATURAL].
- You cannot set [NATURAL], [VIVID], [COOL] or [WARM] in Auto Scene Mode.
- In Auto Scene Mode, you can set this mode separately.

**[STABILIZER]**

For details on [REC] Mode menu settings, refer to P20.

This gives an effect where the blurring associated with the motion of a camera or its subject is reduced.

Applicable modes:   

**[OFF]**

**[ON]:** The [STABILIZER] function is activated when all of the following conditions are met during the recording.

- Flash is not activated
- Shutter speed is in the range of 1/4 to 1/60
- ISO sensitivity is [ISO800] or lower
- Self-timer is not used
- Tripod is not used



 **Note**

- Not enough reduction may be achieved depending on the recording conditions or subject conditions.
- It is not activated during Burst recording.
- It is not activated during motion picture recording.
- It may take a long time to save an image.

## [AF ASSIST LAMP]

For details on [REC] Mode menu settings, refer to P20.

Illuminating the subject makes it easier for the camera to focus when recording in low light conditions that make focusing difficult.

Applicable modes:  

[OFF]: The AF assist lamp does not turn on.

[ON]: When taking pictures in dark places, the AF assist lamp lights while the shutter button is pressed halfway. (Larger AF areas are now displayed.)

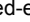
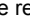
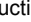
 **Note**


- The effective range of the AF assist lamp is 1.5 m (4.92 feet).
- When you do not want to use the AF assist lamp (A) (e.g. when taking pictures of animals in dark places), set the [AF ASSIST LAMP] to [OFF]. In this case, it will become more difficult to focus on the subject.
- [AF ASSIST LAMP] is fixed to [OFF] in [SELF PORTRAIT], [SCENERY], [NIGHT SCENERY], [SUNSET], [FIREWORKS] and [AERIAL PHOTO] in Scene Mode.
- [AF ASSIST LAMP] cannot be set in Motion Picture Mode. Setting of other recording mode will be reflected.



## [RED-EYE REMOVAL]

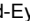
For details on [REC] Mode menu settings, refer to P20.

When the flash is used with the Red-eye reduction ([], [], []) selected, it will automatically detect and correct the red-eye in the image data.

Applicable modes:  

[OFF]/[ON]

 **Note**

- It may not be able to correct the red-eye depending on the recording conditions.
- When the Digital Red-Eye Correction is set to [ON], [] appears on the flash icon.
- Refer to P44 for details.

## [CLOCK SET]

For details on [REC] Mode menu settings, refer to P20.

To set the year, month, day and time

It functions in exactly the same way as [CLOCK SET] (P23) in the [SETUP] menu.

## Entering Text

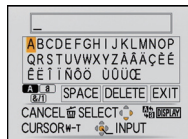
It is possible to enter babies' and pets' names and the names of travel destinations when recording. (Only alphabetical characters and symbols can be entered.)

### 1 Display the entry screen.

- You can display the entry screen via the following operations.
  - [NAME] of [BABY1]/[BABY2] or [PET] (P56) in Scene Mode.
  - [LOCATION] in [TRAVEL DATE] (P65).

### 2 Press ▲/▼/◀/▶ to select text and then press [MENU/SET] to register.

- Press [DISPLAY] to switch text between [A] (capitals), [a] (lower case) and [&/1] (special characters and numbers).
- The entry position cursor can be moved left and right with the zoom lever.
- To enter a blank, move the cursor to [SPACE] or to delete an entered character, move the cursor to [DELETE], and press [MENU/SET].
- To stop editing at any time during text entry, press [EXIT].
- A maximum of 30 characters can be entered.



### 3 Press ▲/▼/◀/▶ to move the cursor to [EXIT] and then press [MENU/SET] to end text input.

- Display will return to the appropriate setting screen.

#### Note

- Text can be scrolled if all of the entered text does not fit on the screen.

[PLAYBACK] Mode: 

## Playing Back Pictures in Sequence (Slide Show)

You can play back the pictures you have taken in synchronisation with music, and you can do this in sequence while leaving a fixed interval between each of the pictures. Furthermore, you can play back only those pictures you have set as Favorites as a Slide Show.

This playback method is recommended when you have connected the camera to a TV set to view the pictures you have taken.

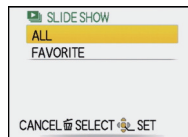
**1** Slide the [REC]/[PLAYBACK] selector switch to , and then press [MODE].



**2** Press ▲/▼ to select [SLIDE SHOW], and then press [MENU/SET].

**3** Press ▲/▼ to select the item and then press [MENU/SET].

- [FAVORITE] can be selected only when [FAVORITE] on the [PLAYBACK] menu (P91) is at [ON] and there are pictures already set as Favorites.



**4** Press ▲ to select [START] and then press [MENU/SET].



**5** Press ▼ to finish the Slide Show.

- Normal Playback resumes after the Slide Show finishes.



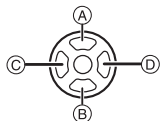
## ■ Operations performed during Slide Show

The cursor displayed during playback is the same as ▲/▼/◀/▶.

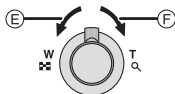
- The menu screen is restored when [⏏] is pressed.

- Ⓐ Play/Pause
- Ⓑ Stop
- Ⓒ Back to previous picture\*
- Ⓓ Forward to next picture\*

\* These operations can be performed only in the Pause Mode.



- Ⓔ Reduce volume level
- Ⓕ Increase volume level



## ■ Changing the Slide Show settings

You can change the settings for Slide Show Playback by selecting [EFFECT] or [SETUP] on the Slide Show menu screen.

### [EFFECT]

This allows you to select the screen effects or music effects when switching from one picture to the next.

[NATURAL], [SLOW], [SWING], [URBAN], [OFF]

- When [URBAN] has been selected, the picture may appear in black and white as a screen effect.

### [SETUP]

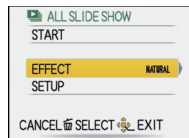
[DURATION] or [REPEAT] can be set.


Item	Settings
[DURATION]	1SEC./2SEC./3SEC./5SEC.
[REPEAT]	ON/OFF
[MUSIC]	ON/OFF

- [DURATION] can be set only when [OFF] has been selected as the [EFFECT] setting.
- [MUSIC] cannot be selected when [OFF] has been selected as the [EFFECT] setting.

### Note

- Motion pictures cannot be played back as a Slide Show.
- It is not possible to add new music effects.



[PLAYBACK] Mode: 

## Selecting Pictures and Playing them Back

([FAVORITE PLAY])

You can play back the pictures you have set as [FAVORITE] (P91) (Only when [FAVORITE] is set to [ON] and there are pictures which have been set to [FAVORITE]).

**1** Slide the [REC]/[PLAYBACK] selector switch to , and then press [MODE].

**2** Press ▲/▼ to select [FAVORITE PLAY], and then press [MENU/SET].

 **Note**

- You can use only [ROTATE], [PRINT SET] or [PROTECT] in the [PLAYBACK] menu.

[PLAYBACK] Mode: 

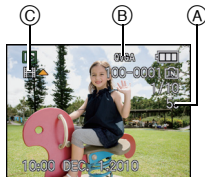
## Playing Back Motion Pictures

Press **◀/▶** to select a picture with a motion picture icon (such as [QVGA]), and then press **▲** to play back.

- (A) The motion picture recording time
- (B) Motion picture icon
- (C) Motion picture playback icon

• After playback starts, the elapsed playback time is displayed on the upper right of the screen.

For example, 8 minutes and 30 seconds is displayed as [8m30s].

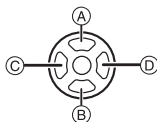


### ■ Operations performed during motion picture playback

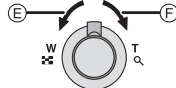
The cursor displayed during playback is the same as **▲/▼/◀/▶**.

- (A) Play/Pause
- (B) Stop
- (C) Fast rewind, Frame-by-frame rewind\*
- (D) Fast forward, Frame-by-frame forward\*

\* These operations can be performed only in the Pause Mode.



- (E) Reduce volume level
- (F) Increase volume level



### • About fast forward/rewind playback

- Press **▶** during playback to fast forward (press **◀** to rewind). The fast forward/rewind speed increases if you press **◀/▶** again. (The display on the screen changes from **▶▶** to **▶▶▶**.)
- Press **▲** to resume normal playback speed.
- When using a high capacity card, it is possible that fast rewinding may be slower than usual.

### Note

- Sound can be heard through the speaker. Refer to [VOLUME] (P23) for information about how to adjust the volume in the [SETUP] menu.
- The file format that can be played back with this camera is QuickTime Motion JPEG.
- Please note that the bundled software includes QuickTime to play back motion picture files created with the camera on the PC.
- Some QuickTime Motion JPEG files recorded by a PC or other equipment may not play back on the camera.
- If you play back motion pictures that have been recorded with other equipment, the picture quality may deteriorate or the pictures may not play back.
- Be careful not to block the speaker in the bottom of the camera during playback.

[PLAYBACK] Mode: 

## Using the [PLAYBACK] Mode menu


You can use various functions in Playback Mode to rotate pictures, set Protection for them etc.

- With [TEXT STAMP] or [RESIZE], a new edited picture is created. A new picture cannot be created if there is no free space on the built-in memory or the card so we recommend checking that there is free space and then editing the picture.

### [CALENDAR]

You can display pictures by recording date.

#### 1 Select [CALENDAR] on the [PLAYBACK] Mode menu. (P20)


- You can also rotate the zoom lever several times towards  (W) to display the calendar screen. (P38)

#### 2 Press ▲/▼/◀/▶ to select the date to be played back.

- If there were no pictures recorded during a month, the month is not displayed.



#### 3 Press [MENU/SET] to display the pictures that were recorded on the selected date.

- Press  to return to the calendar screen.



#### 4 Press ▲/▼/◀/▶ to select a picture and then press [MENU/SET].

- The picture that was selected will appear.

#### Note

- The recording date of the picture selected in the playback screen becomes the date selected when the calendar screen is first displayed.
- If there are multiple pictures with the same recording date, the first picture recorded on that day is displayed.
- You can display the calendar between January 2000 and December 2099.
- If the date is not set in the camera, the recording date is set as January 1st, 2010.
- If you take pictures after setting the travel destination in [WORLD TIME], the pictures are displayed by the dates at the travel destination in Calendar Playback.

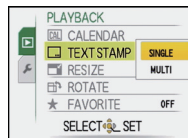
## [TEXT STAMP]

You can stamp the recording date/time, name, location or travel date onto the recorded pictures.

It is suitable for regular size printing. (Pictures with a Picture Size larger than [3M] will be resized when stamping the date etc. on them.)

**1** Select [TEXT STAMP] on the [PLAYBACK] Mode menu. (P20)

**2** Press ▲/▼ to select [SINGLE] or [MULTI] and then press [MENU/SET].



[SINGLE]

[MULTI]

**3** Select the picture, and then press [MENU/SET] to set.

- [ ] appears on screen if the picture is stamped with text.

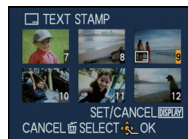
**[MULTI] setting**

Press [DISPLAY] to set (repeat), and then press [MENU/SET] to set.

- The setting is canceled when [DISPLAY] is pressed again.



Press ◀▶ to select the picture.



Press ▲/▼/◀▶ to select the pictures.

**4** Press ▲/▼ to select text stamp items, and then press ▶.

**5** Press ▲/▼ to select the settings, and then press [MENU/SET].

Item	Setting item
[SHOOTING DATE]	[OFF]
	[W/O TIME]: Stamp the year, month and date.
	[WITH TIME]: Stamp the year, month, day, hour and minutes.
[NAME]	[OFF]
	[ ] (BABY/PET): Stamps names registered in name settings for [BABY 1]/[BABY 2] or [PET] in Scene Mode.
	[OFF]
[LOCATION]	[ON]: Stamps the travel destination name set under [LOCATION].
	[OFF]
[TRAVEL DATE]	[ON]: Stamps the travel date set under [TRAVEL DATE].
	[OFF]

## 6 Press [MENU/SET].

- If you set [TEXT STAMP] for a picture with a Picture Size larger than [3M], the Picture Size will become smaller as shown below.
  - [12M]/[8M]/[5M] → [3M] [4:3]
  - [105M] → [25M] [3:2]
  - [9M] → [2M] [16:9]
- When selecting [OK/OK], press ▲ to select [YES] for stamping [AGE], and then press [MENU/SET] and proceed to step 7.

## 7 Press ▲ to select [YES] and then press [MENU/SET].

- The message [SAVE NEW PICTURES?] appears if the picture was recorded with a Picture Size [3M] or less.



## 8 Press [EXIT] to return to the menu screen.\*

- \*The menu screen is automatically restored when [MULTI] is selected.
- Press [MENU/SET] to close the menu.

### Note

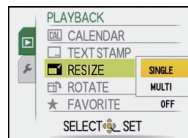
- When you print pictures stamped with text, the date will be printed over the stamped text if you specify printing of the date at the photo shop or on the printer.
- You can set up to 50 pictures at one time in [MULTI].
- The picture quality may deteriorate when text stamping is carried out.
- Depending on the printer being used, some characters may be cut at printing. Check before printing.
- When text is stamped onto the [0.3M] pictures, it is difficult to read it.
- Text and dates cannot be stamped on the pictures in the following cases.
  - Motion pictures
  - Pictures recorded without setting the clock
  - Pictures that were previously stamped with [TEXT STAMP]
  - Pictures recorded with other equipment

## [RESIZE] Reducing the Picture Size (number of pixels)

To allow easy posting to web pages, attachment to email etc., picture size (number of pixels) is reduced.

**1** Select [RESIZE] on the [PLAYBACK] Mode menu. (P20)

**2** Press ▲/▼ to select [SINGLE] or [MULTI] and then press [MENU/SET].



**3** Select the picture and size.

### [SINGLE] setting

- 1 Press ◀/▶ to select the picture, and then press [MENU/SET].
- 2 Press ◀/▶ to select the size\*, and then press [MENU/SET].

\*Only the sizes to which the pictures can be resized is displayed.

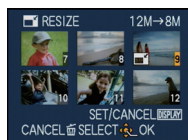
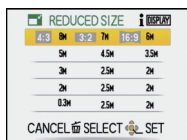
### [SINGLE]



### [MULTI] setting

- 1 Press ▲/▼ to select the size, and then press [MENU/SET].
  - When [DISPLAY] is pressed, an explanation of resizing is displayed.
- 2 Press ▲/▼/◀/▶ to select the picture, and then press [DISPLAY].
  - Repeat this step for each picture, and press [MENU/SET] to set.

### [MULTI]



**4** Press ▲ to select [YES] and then press [MENU/SET].

**5** Press [⏪] to return to the menu screen.\*

- \*The menu screen is automatically restored when [MULTI] is selected.
- Press [MENU/SET] to close the menu.





 **Note**

- You can set up to 50 pictures at one time in [MULTI].
- The picture quality of the resized picture will deteriorate.
- It may not be possible to resize pictures recorded with other equipment.
- Motion pictures and pictures stamped with [TEXT STAMP] cannot be resized.

**[ROTATE]**

This mode allows you to rotate pictures manually in 90° steps.

**1** Select **[ROTATE]** on the **[PLAYBACK]** Mode menu. **(P20)**

**2** Press **◀/▶** to select the picture and then press **[MENU/SET]**.

- Motion pictures and protected pictures cannot be rotated.



**3** Press **▲/▼** to select the direction to rotate the picture and then press **[MENU/SET]**.

- : The picture rotates clockwise in steps of 90°.
- : The picture rotates counter-clockwise in steps of 90°.



**4** Press **[EXIT]** to return to the menu screen.

- Press **[MENU/SET]** to close the menu.

**Note**

- When you play back pictures on a PC, they cannot be displayed in the rotated direction unless the OS or software is compatible with Exif. Exif is a file format for still pictures which allows recording information etc. to be added. It was established by "JEITA (Japan Electronics and Information Technology Industries Association)".
- It may not be possible to rotate pictures that have been recorded with other equipment.

**[FAVORITE]**

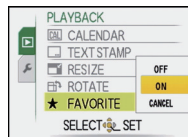
You can do the following if a mark has been added to pictures and they have been set as Favorites.

- Play back only the pictures set as Favorites. ([FAVORITE PLAY])
- Play back the pictures set as Favorites only as a Slide Show.
- Delete all the pictures not set as Favorites. ([ALL DELETE EXCEPT★])

### 1 Select **[FAVORITE]** on the **[PLAYBACK]** Mode menu. (P20)

### 2 Press **▼** to select **[ON]** and then press **[MENU/SET]**.

- You cannot set pictures as Favorites if **[FAVORITE]** is set to **[OFF]**. Also **[★]** will not appear when **[FAVORITE]** is set to **[OFF]** even if it was previously set to **[ON]**.



### 3 Press **[MENU/SET]** to close the menu.

### 4 Press **◀/▶** to select the picture and then press **▼**.

- Repeat the above procedure.
- If **▼** is pressed again, the Favorite setting is canceled.



#### ■ Canceling all the **[FAVORITE]** settings

### 1 Select **[CANCEL]** on the screen shown in step 2 and then press **[MENU/SET]**.

### 2 Press **▲** to select **[YES]** and then press **[MENU/SET]**.

### 3 Press **[MENU/SET]** to close the menu.

- You cannot select **[CANCEL]** if not even one picture has been set as a Favorite.

#### Note

- You can set up to 999 pictures as Favorites.
- When printing pictures at a photo printing store, **[ALL DELETE EXCEPT★]** (P41) is useful so only the pictures you want to be printed remain on the card.
- You may not be able to set pictures taken with other equipment as Favorites.

## [PRINT SET]

DPOF "Digital Print Order Format" is a system that allows the user to select which pictures to print, how many copies of each picture to print and whether or not to print the recording date on the pictures when using a DPOF compatible photo printer or photo printing store. For details, ask at your photo printing store.

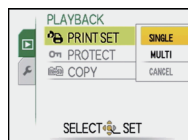
When you want to use a photo printing store to print pictures recorded on the built-in memory, copy them to a card (P95) and then set the Print Setting.

For more information visit:

[http://panasonic.jp/dc/dpof\\_110/white\\_e.htm](http://panasonic.jp/dc/dpof_110/white_e.htm)

**1** Select [PRINT SET] on the [PLAYBACK] Mode menu. (P20)

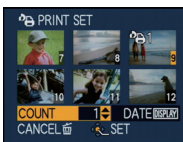
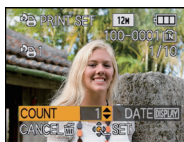
**2** Press ▲/▼ to select [SINGLE] or [MULTI] and then press [MENU/SET].



**3** Select the picture, and then press [MENU/SET].

[SINGLE]

[MULTI]



Press ◀/▶ to select the picture.

Press ▲/▼/◀/▶ to select the pictures.

**4** Press ▲/▼ to set the number of prints, and then press [MENU/SET] to set.

- When [MULTI] has been selected, repeat steps 3 and 4 for each picture. (It is not possible to use the same setting for a multiple number of pictures.)

**5** Press [EXIT] to return to the menu screen.

- Press [MENU/SET] to close the menu.

### ■ Canceling all the [PRINT SET] settings

- 1 Select [CANCEL] on the screen shown in step 2 and then press [MENU/SET].
- 2 Press ▲ to select [YES] and then press [MENU/SET].
- 3 Press [MENU/SET] to close the menu.

• You cannot select [CANCEL] if not even one picture has been set for printing.

### ■ To print the date

After setting the number of prints, set/cancel printing with the recording date by pressing [DISPLAY].

- When you go to a photo printing store for digital printing, be sure to order the printing of the date additionally if required.
- Depending on the photo printing store or the printer, the date may not be printed even if you set to print the date. For further information, ask at your photo printing store or refer to the operating instructions for the printer.
- The date cannot be printed on pictures stamped with text.

### Note

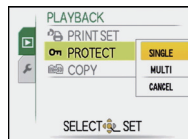
- The number of prints can be set from 0 to 999.
- With a printer supporting PictBridge, the date print settings of the printer may take precedence so check if this is the case.
- It may not be possible to use the Print Settings with other equipment. In this case, cancel all the settings, and reset the settings.
- If the file is not based on the DCF standard, the Print Setting cannot be set.

**[PROTECT]**

You can set Protection for pictures you do not want to be deleted by mistake.

**1** Select **[PROTECT]** on the **[PLAYBACK]** Mode menu. **(P20)**

**2** Press **▲/▼** to select **[SINGLE]** or **[MULTI]** and then press **[MENU/SET]**.



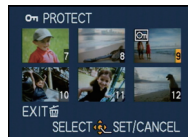
**[SINGLE]**

**[MULTI]**

**3** Select the picture, and then press **[MENU/SET]**.

When **[MULTI]** has been selected

- Repeat these steps for each picture.
- The settings are canceled when **[MENU/SET]** is pressed again.



Press **◀/▶** to select the picture.

Press **▲/▼/◀/▶** to select the pictures.

**4** Press **[EXIT]** to return to the menu screen.

- Press **[MENU/SET]** to close the menu.

#### ■ Canceling all the **[PROTECT]** settings

**1** Select **[CANCEL]** on the screen shown in step 2 and then press **[MENU/SET]**.

**2** Press **▲** to select **[YES]** and then press **[MENU/SET]**.

**3** Press **[MENU/SET]** to close the menu.

- If you press **[MENU/SET]** while canceling Protection, the canceling will stop halfway.

#### Note

- The Protect setting may not be effective on other equipment.
- Even if you protect pictures in the built-in memory or a card, they will be deleted if the built-in memory or the card is formatted.
- Even if you do not protect pictures on a card, they cannot be deleted when the card's Write-Protect switch is set to **[LOCK]**.

## [COPY]

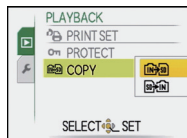
You can copy the data of the pictures you have taken from the built-in memory to a card or from a card to the built-in memory.

**1** Select [COPY] on the [PLAYBACK] Mode menu. (P20)

**2** Press  $\blacktriangle/\blacktriangledown$  to select the copy destination and then press [MENU/SET].

$\text{IN} \rightarrow \text{SD}$ : All the picture data in the built-in memory are copied onto the card at one time. → step 4.

$\text{SD} \rightarrow \text{IN}$ : One picture at a time is copied from the card to the built-in memory. → step 3.



**3** Press  $\blacktriangleleft/\blacktriangleright$  to select the picture and then press [MENU/SET].

**4** Press  $\blacktriangle$  to select [YES], and then press [MENU/SET].

- If you press [MENU/SET] while copying pictures, the copying will stop halfway.
- Do not turn the camera off at any point during the copying process.



**5** Press [TOP] to return to the menu screen.

- Press [MENU/SET] to close the menu.
- If you copy from the built-in memory to a card, all the pictures are copied and then the screen automatically returns to the playback screen.

### Note

- If you copy picture data from the built-in memory to a card which does not have sufficient free space, the picture data will only be copied halfway. We recommend using a card which has more free space than the built-in memory (about 40 MB).
- If a picture exists with the same name (folder number/file number) as the picture to be copied in the copy destination when  $\text{IN} \rightarrow \text{SD}$  is selected, a new folder is created and the picture is copied. If a picture exists with the same name (folder number/file number) as the picture to be copied in the copy destination when  $\text{SD} \rightarrow \text{IN}$  is selected, that picture is not copied. (P117)
- It may take time to copy the picture data.
- Only pictures recorded with a Panasonic digital camera (LUMIX) will be copied. (Even if the pictures were recorded with a Panasonic digital camera, you may not be able to copy them if they were edited with a PC.)
- [PRINT SET] or [PROTECT] settings will not be copied. Perform the settings again after copying is finished.

## Connecting to a PC

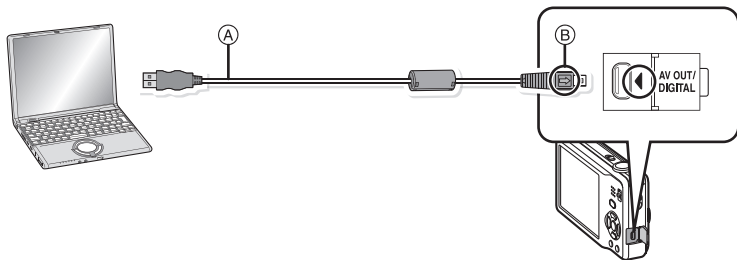
You can acquire recorded pictures to a PC by connecting the camera and the PC.

- Some PCs can read directly from the card removed from the camera. For details, refer to the operating instructions of your PC.
- **If the computer being used does not support SDXC Memory Cards, a message prompting you to format may appear. (Doing so will cause recorded images to be erased so do not choose to format.)**  
**If the card is not recognized, please refer to the below support site.**  
<http://panasonic.net/avc/sdcard/information/SDXC.html>
- You can easily print out or e-mail the pictures you have imported. Use of the "PHOTOfunSTUDIO" bundled software on the CD-ROM (supplied) is a convenient way of doing this.
- Read the separate operating instructions for the supplied software for more information about the software in the CD-ROM (supplied) and how to install it.

Preparations:

Turn on the camera and the PC.

Remove the card before using the pictures in the built-in memory.



Ⓐ USB connection cable (supplied)

- Check the directions of the connectors, and plug them straight in or unplug them straight out. (Otherwise the connectors may be bent out of shape which will cause a malfunction.)

Ⓑ Align the marks, and insert.

- Use a battery with sufficient battery power or the AC adaptor (optional) and DC coupler (optional). If the remaining battery power becomes low while the camera and the PC are communicating, the alarm beeps.

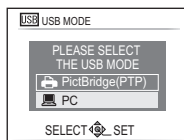
Refer to "Disconnecting the USB connection cable safely" (P97) before disconnecting the USB connection cable. Otherwise, data may be destroyed.



**1** Connect the camera to a PC via the USB connection cable (supplied). (A)

- Do not use any other USB connection cables except the one supplied.  
Use of cables other than the supplied USB connection cable may cause a malfunction.

**2** Press **▲/▼** to select [PC], and then press **[MENU/SET]**.



**3** Double-click on **[Removable Disk]** in **[My Computer]**.

- When using a Macintosh, the drive is displayed on the desktop. (“LUMIX”, “NO\_NAME” or “Untitled” is displayed.)

**4** Double-click **[DCIM]** folder.

**5** Using a drag-and-drop operation, move the pictures you want to acquire or the folder storing those pictures to any different folder on the PC.

■ **Disconnecting the USB connection cable safely**

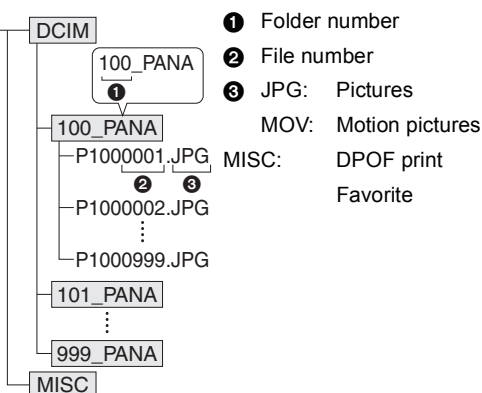
- Proceed with the hardware removal using the “Safely Remove Hardware” icon on the task tray of the PC. If the icon is not displayed, check that [ACCESS] is not displayed on the LCD monitor of the digital camera before removing the hardware.

 **Note**

- This unit cannot stand upright when the AC adaptor is connected. When operating it on a flat surface, we recommend placing it on a soft cloth.
- Turn the camera off before connecting or disconnecting the AC adaptor (optional).
- Before inserting or removing a card, turn the camera off and disconnect the USB connection cable. Otherwise, data may be destroyed.

## ■ Viewing the contents of the built-in memory or card using the PC (folder composition)

- Built-in memory
- Card



A new folder is created when pictures are taken in the following situations.

- When a card containing a folder with the same folder number has been inserted. (Such as when pictures were taken using another make of camera).
- When there is a picture with file number 999 inside the folder.

## ■ Connection in the PTP Mode (Windows<sup>®</sup> XP, Windows Vista<sup>®</sup>, Windows<sup>®</sup> 7 and Mac OS X only)

Select [PictBridge(PTP)] when connecting USB cable.

Data can now be read only from the card into the PC.

- When there are 1000 or more pictures on a card, the pictures may not be imported in the PTP Mode.

## Printing the Pictures

If you connect the camera to a printer supporting PictBridge, you can select the pictures to be printed out and instruct that printing be started on the camera's LCD monitor.

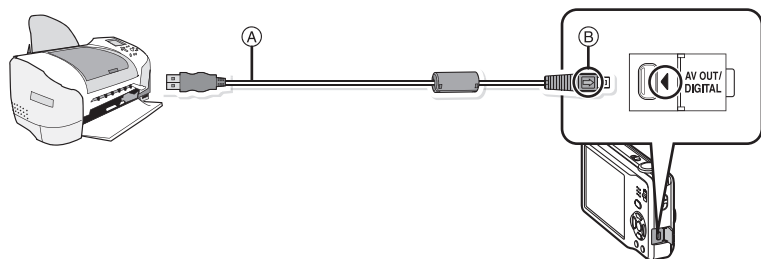
- Some printers can print directly from the card removed from the camera. For details, refer to the operating instructions of your printer.

Preparations:

Turn on the camera and the printer.

Remove the card before printing the pictures from the built-in memory.

Check print quality and other settings on the printer before printing the pictures.



Ⓐ USB connection cable (supplied)

- Check the directions of the connectors, and plug them straight in or unplug them straight out. (Otherwise the connectors may be bent out of shape which will cause a malfunction.)

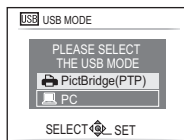
Ⓑ Align the marks, and insert.

- Use a battery with sufficient battery power or the AC adaptor (optional) and DC coupler (optional). If the remaining battery power becomes low while the camera and the printer are connected, the alarm beeps. If this happens during printing, stop printing at once. If not printing, disconnect the USB connection cable.

### 1 Connect the camera to a printer via the USB connection cable Ⓐ (supplied).

- When the camera is connected to the printer, the cable disconnect prohibit icon [⊘] appears. Do not disconnect the USB cable while [⊘] is displayed.

### 2 Press ▲/▼ to select [PictBridge(PTP)], and then press [MENU/SET].



**Note**

- This unit cannot stand upright when the AC adaptor is connected. When operating it on a flat surface, we recommend placing it on a soft cloth.
- Do not use any other USB connection cables except the one supplied.  
Use of cables other than the supplied USB connection cable may cause malfunction.
- Turn the camera off before connecting or disconnecting the AC adaptor (optional).
- Before inserting or removing a card, turn the camera off, and disconnect the USB connection cable.
- You cannot switch between the built-in memory and the card while the camera is connected to the printer. Disconnect the USB connection cable, insert (or remove) the card and then connect the USB connection cable to the printer again.

## Selecting a single picture and printing it

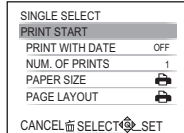
- 1** Press **◀/▶** to select the picture and then press **[MENU/SET]**.

- The message disappears in about 2 seconds.



- 2** Press **▲** to select **[PRINT START]** and then press **[MENU/SET]**.

- Refer to "Print Settings" (P102) for the items which can be set before printing the pictures.
- Press **[MENU/SET]** to cancel printing.
- Disconnect the USB connection cable after printing.

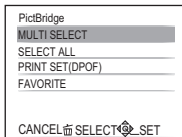


## Selecting multiple pictures and printing them

**1** Press **▲**.

**2** Press **▲/▼** to select an item and then press **[MENU/SET]**.

- If the print check screen has appeared, select **[YES]**, and print the pictures.

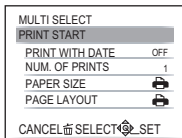


Item	Description of settings
<b>[MULTI SELECT]</b>	Multiple pictures are printed at one time. • Press <b>▲/▼/◀/▶</b> to select the pictures, and then when <b>[DISPLAY]</b> is pressed, <b>[ ]</b> appears on the pictures to be printed. (When <b>[DISPLAY]</b> is pressed again, the setting is canceled.) • After the pictures have been selected, press <b>[MENU/SET]</b> .
<b>[SELECT ALL]</b>	Prints all the stored pictures.
<b>[PRINT SET (DPOF)]</b>	Prints the pictures set in <b>[PRINT SET]</b> only. (P92)
<b>[FAVORITE]*</b>	Prints the pictures set as Favorites only. (P91)

\* Only when **[FAVORITE]** is at **[ON]** and when there are pictures set as Favorites. (P91)

**3** Press **▲** to select **[PRINT START]** and then press **[MENU/SET]**.

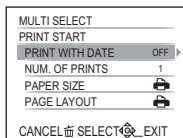
- Refer to "Print Settings" (P102) for the items which can be set before printing the pictures.
- Press **[MENU/SET]** to cancel printing.
- Disconnect the USB connection cable after printing.



## Print Settings

Select and set the items both on the screen in **step 2** of the “Selecting a single picture and printing it” and in **step 3** of the “Selecting multiple pictures and printing them” procedures.

- When you want to print pictures in a paper size or a layout which is not supported by the camera, set [PAPER SIZE] or [PAGE LAYOUT] to [ ] and then set the paper size or the layout on the printer. (For details, refer to the operating instructions of the printer.)
- When [PRINT SET (DPOF)] has been selected, the [PRINT WITH DATE] and [NUM. OF PRINTS] items are not displayed.



### [PRINT WITH DATE]

Item	Description of settings
[OFF]	Date is not printed.
[ON]	Date is printed.

- If the printer does not support date printing, the date cannot be printed on the picture.
- Since the printer's settings may take precedence over the print with date setting, check the printer's print with date setting as well.
- When printing images with a Text Stamp, please remember to set print with date to [OFF] or the date will print on top.

#### Note


**When asking the photo shop to print the pictures**

- By stamping the date using [TEXT STAMP] (P86) or setting date printing at the time of the [PRINT SET] (P92) setting before going to a photo shop, the dates can be printed at the photo shop.

### [NUM. OF PRINTS]






You can set the number of prints up to 999.

**[PAPER SIZE]**

Item	Description of settings
	Settings on the printer are prioritized.
[L/3.5"×5"]	89 mm×127 mm
[2L/5"×7"]	127 mm×178 mm
[POSTCARD]	100 mm×148 mm
[16:9]	101.6 mm×180.6 mm
[A4]	210 mm×297 mm
[A3]	297 mm×420 mm
[10×15cm]	100 mm×150 mm
[4"×6"]	101.6 mm×152.4 mm
[8"×10"]	203.2 mm×254 mm
[LETTER]	216 mm×279.4 mm
[CARD SIZE]	54 mm×85.6 mm


• Paper sizes not supported by the printer will not be displayed.

**[PAGE LAYOUT] (Layouts for printing that can be set with this unit)**


Item	Description of settings
	Settings on the printer are prioritized.
	1 picture with no frame on 1 page
	1 picture with a frame on 1 page
	2 pictures on 1 page
	4 pictures on 1 page

- An item cannot be selected if the printer does not support the page layout.


**■ Layout printing****When printing a picture several times on 1 sheet of paper**

For example, if you want to print the same picture 4 times on 1 sheet of paper, set [PAGE LAYOUT] to  and then set [NUM. OF PRINTS] to 4 for the picture that you want to print.

**When printing different pictures on 1 sheet of paper**

For example, if you want to print 4 different pictures on 1 sheet of paper, set [PAGE LAYOUT] to  and then set [NUM. OF PRINTS] to 1 for each of the 4 pictures.

**Note**

- The camera is receiving an error message from the printer when the  indication lights orange during printing. After finishing printing, make sure there are no problems with the printer.
- If the number of prints is high, the pictures may be printed several times. In this case, the remaining number of prints indicated may differ from the number set.



[PLAYBACK] Mode: 

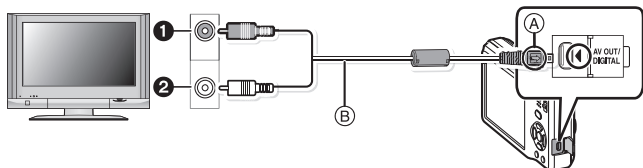
## Playing Back Pictures on a TV Screen

### Playing back pictures using the AV cable (supplied)

Preparations:

Set the [TV ASPECT]. (P25)

Turn this unit and the TV off.



① Yellow: to the video input socket

② White: to the audio input socket

(A) Align the marks, and insert.

(B) AV cable (supplied)

• Check the directions of the connectors, and plug them straight in or unplug them straight out. (Otherwise the connectors may be bent out of shape which will cause a malfunction.)

**1** Connect the AV cable (supplied) to the video input and the audio input sockets on the TV.

**2** Connect the AV cable to the [AV OUT] socket on the camera.

**3** Turn the TV on and select external input.

**4** Turn the camera on.

#### Note

- The LCD monitor of this unit is turned off when the AV cable is connected.
- Depending on the [PICTURE SIZE], black bands may be displayed on the top and bottom or the left and right of the pictures.
- Do not use any other AV cables except the one supplied.
- Read the operating instructions for the TV.
- When you play back a picture vertically, it may be blurry.
- You can view pictures on TVs in other countries (regions) which use the NTSC or PAL system when you set [VIDEO OUT] in the [SETUP] menu.  
(PAL video out is not available on the version DMC-F3P sold in the U.S. and the version DMC-F3PC sold in Canada.)

## Playing back pictures on a TV with an SD Memory Card slot

The recorded still pictures can be played back on a TV with an SD Memory Card slot.


 **Note**

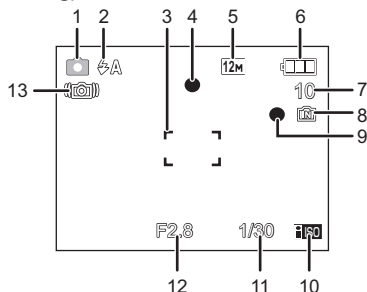
- Depending on the TV model, pictures may not be displayed on the full screen.
- Motion pictures cannot be played back. To play back motion pictures, connect the camera to the TV with the AV cable (supplied).
- SDHC memory cards and SDXC memory cards can only be played back on compatible televisions.

## Screen Display

### ■ In recording

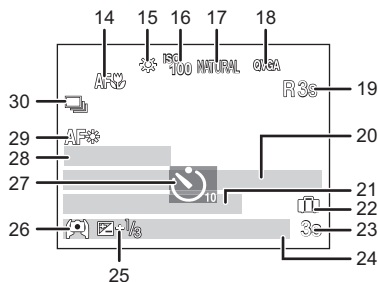
#### Recording in Normal Picture Mode [📷] (Initial setting)

- 1 Recording Mode
- 2 Flash Mode (P43)
- 3 AF area (P33)
- 4 Focus (P33)
- 5 Picture Size (P70)
- 6 Battery indication (P11)
- 7 Number of recordable pictures\*1 (P128)
- 8 Built-in memory (P15)
- 9 : Card (P15) (displayed only during recording)
- 9 Recording state
- 10 ISO sensitivity (P71)
- 11 Shutter speed (P33)
- 12 Aperture value (P33)
- 13 Jitter alert (P34)/STABILIZER (P77)



## ■ In recording (after settings)

- 14 Macro Mode (P48)
- 15 White Balance (P72)
- 16 ISO sensitivity (P71)
- 17 Color Mode (P77)
- 18 Recording Quality (P63)
- 19 Available recording time (P62): R8m30s
- 20 Name\*<sup>2</sup> (P56)
- 21 Age\*<sup>2</sup> (P56)
- Location\*<sup>3</sup> (P65)
- 22 Travel Date (P65)
- 23 Elapsed recording time (P62)
- 24 Current date and time/📍: Travel destination setting\*<sup>3</sup> (P68)



**EZ** **W** **T** **1X**: Zoom/Extended Optical Zoom (P35)/Digital Zoom (P35, 76)

- 25 Exposure compensation (P50)
- 26 High Angle Mode (P24)
- ☐\***: Power LCD (P24)
- A\***: Auto Power LCD (P24)
- 27 Self-timer Mode (P49)
- 28 Number of days that have passed since the departure date (P65)
- 29 AF assist lamp (P78)
- 30 Burst (P76)/🔊: Audio recording (P62)

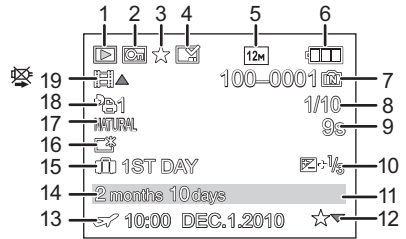
\*1 [+99999] is displayed if there are more than 100000 pictures remaining.

\*2 This is displayed for about 5 seconds when this unit is turned on in [BABY1]/[BABY2] or [PET] in Scene Mode.

\*3 This is displayed for about 5 seconds when the camera is turned on, after setting the clock and after switching from Playback Mode to Recording Mode.

## ■ In playback

- 1 Playback Mode (P37)
- 2 Protected picture (P94)
- 3 Favorites (P91)
- 4 Stamped with text indication (P86)
- 5 Picture Size (P70)
- 6 Battery indication (P11)
- 7 Folder/File number (P98)
- 8 Built-in memory (P15)
- 9 Elapsed playback time (P84): 8m30s
- 10 Picture number/Total pictures
- 11 Motion picture recording time (P84): 8m30s
- 12 Exposure compensation (P50)
- 13 Recording information
- 14 Favorites settings (P91)
- 15 Recorded date and time/World Time (P68)
- 16 Name (P56)
- 17 Location (P65)
- 18 Age (P56)
- 19 Number of days that have passed since the departure date (P65)



## Cautions for Use

### Optimal use of the camera

**Keep the camera as far away as possible from electromagnetic equipment (such as microwave ovens, TVs, video games etc.).**

- If you use the camera on top of or near a TV, the pictures and sound on the camera may be disrupted by electromagnetic wave radiation.
- Do not use the camera near cell phones because doing so may result in noise adversely affecting the pictures and sound.
- Recorded data may be damaged, or pictures may be distorted, by strong magnetic fields created by speakers or large motors.
- Electromagnetic wave radiation generated by microprocessors may adversely affect the camera, disturbing the pictures and sound.
- If the camera is adversely affected by electromagnetic equipment and stops functioning properly, turn the camera off and remove the battery or disconnect the AC adaptor (optional). Then reinsert the battery or reconnect the AC adaptor and turn the camera on.

**Do not use the camera near radio transmitters or high-voltage lines.**

- If you record near radio transmitters or high-voltage lines, the recorded pictures and sound may be adversely affected.

**Always use the supplied cords and cables. If you use optional accessories, use the cords and the cables supplied with them.**

**Do not extend the cords or the cables.**

**Do not spray the camera with insecticides or volatile chemicals.**

- If the camera is sprayed with such chemicals, the body of the camera may be damaged and the surface finish may peel off.
- Do not keep rubber or plastic products in contact with the camera for a long period of time.

### Care of the camera

- **Do not touch the lens or the sockets with dirty hands. Also, be careful not to allow liquids, sand and other foreign matter to get into the space around the lens, buttons etc.**
- **Do not strongly shake or bump the camera by dropping or hitting it. Do not subject to strong pressure.**

The camera may malfunction, recording pictures may become impossible, or the lens, the LCD monitor or the external case may be damaged.

- We strongly recommend you do not leave the camera in your trousers pocket when you sit down or forcefully insert it into a full or tight bag etc. Damage to the LCD monitor or personal injury may result.
- Do not attach any other items to the hand strap that's included with your camera. While being stored, that item can rest against the LCD monitor and damage it.
- **Be particularly careful in the following places as they may cause this unit to malfunction.**

- Places with a lot of sand or dust.
- Places where water can come into contact with this unit such as when using it on a rainy day or on a beach.

- **This camera is not waterproof. If water or seawater splashes on the camera, use a dry cloth to wipe the camera body carefully.**  
**If the unit does not operate normally, please contact the dealer where you purchased the camera or the repair service center.**



### About Condensation (When the lens is fogged up)

- Condensation occurs when the ambient temperature or humidity changes. Be careful of condensation since it causes lens stains, fungus and camera malfunction.
- If condensation occurs, turn the camera off and leave it for about 2 hours. The fog will disappear naturally when the temperature of the camera becomes close to the ambient temperature.

## Cleaning

**Before cleaning the camera, remove the battery or the DC coupler (optional), or disconnect the power plug from the outlet. Then wipe the camera with a dry soft cloth.**

- When the camera is soiled badly, it can be cleaned by wiping the dirt off with a wrung wet cloth, and then with a dry cloth.
- Do not use solvents such as benzine, thinner, alcohol, kitchen detergents, etc., to clean the camera, since it may deteriorate the external case or the coating may peel off.
- When using a chemical cloth, be sure to follow the accompanying instructions.
- If the LCD monitor is dirty, blow away dust and foreign matter with a commercial blower brush. If it is very dirty, gently rub with a soft cloth or an eyeglass cloth.

## About the LCD monitor

- Do not press the LCD monitor with excessive force. Uneven colors may appear on the LCD monitor and it may malfunction.
- Do not press on the LCD monitor with hard pointed tips, such as ball point pens.
- Do not scratch or press the LCD monitor too hard.
- If the camera is cold when you turn it on, the picture on the LCD monitor will be slightly darker than usual at first. However, the picture will return to normal brightness when the internal temperature of the camera increases.

Extremely high precision technology is employed to produce the LCD monitor screen. However there may be some dark or bright spots (red, blue or green) on the screen. This is not a malfunction. The LCD monitor screen has more than 99.99% effective pixels with a mere 0.01% of the pixels inactive or always lit. The spots will not be recorded on pictures on the built-in memory or a card.

## About the Lens

- Do not press the lens with excessive force.
- Do not leave the camera with the lens facing the sun as rays of light from the sun may cause it to malfunction. Also, be careful when placing the camera outside or near a window.



## Battery

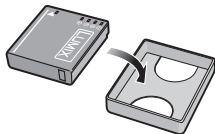
The battery is a rechargeable lithium ion battery. Its ability to generate power comes from the chemical reaction that takes place inside it. This reaction is susceptible to the surrounding temperature and humidity. If the temperature is too high or too low, the operating time of the battery will become shorter.

### Always remove the battery after use.

- Store the removed battery in the battery case (supplied).

### If you drop the battery accidentally, check to see if the body of the battery and the terminals are damaged.

- Inserting a damaged battery in the camera will damage the camera.



### Bring charged spare batteries when going out.

- Be aware that the operating time of the battery becomes shorter in low temperature conditions such as at a ski resort.
- When you travel, do not forget to bring the battery charger (supplied) so that you can charge the battery in the country that you are traveling in.

### Dispose of unusable battery.

- The battery has a limited life.
- Do not throw the battery into fire because it may cause an explosion.
- The unusable battery should be discarded in accordance with battery recycling laws. Call the RBRC hotline at 1-800-822-8837 for information.

### Do not allow battery terminals to come into contact with metal objects (such as necklaces, hairpins etc.).

- This can cause short circuiting or heat generation and you may be badly burned if you touch a battery.

## Charger

- If you use the battery charger near a radio, the radio reception may be disturbed.
- Keep the charger 1 m (3.28 feet) or more away from radios.
- The charger may generate whirring sounds when it is being used. This is not a malfunction.
- After use, be sure to disconnect the power supply device from the electrical outlet. (A very small amount of current is consumed if it is left connected.)
- Keep the terminals of the charger and battery clean.

## Card

**Do not leave the card where the temperature is high, where electromagnetic waves or static electricity are easily generated or exposed to direct sunlight.**

**Do not bend or drop the card.**

- The card may be damaged or the recorded content may be damaged or deleted.
- Put the card in the card case or the storage bag after use and when storing or carrying the card.
- Do not allow dirt, dust or water to get into the terminals on the back of the card and do not touch the terminals with your fingers.

**Notice for when transferring to another party, or disposing of the memory card**

- “Format” or “delete” using the camera or a PC will only modify the file management information, and it will not erase the data in the memory card completely.

It is recommended to physically destroy the memory card or use the commercially available computer data deletion software to completely erase the data in the memory card before transferring to another party or disposing.

Management of data in the memory card is the responsibility of the user.

## About the personal information

Personal information is included in the recorded image when the name or birthday is set in [BABY1]/[BABY2] in Scene Mode.

### Disclaimer

- Information including personal information may be altered or vanish due to erroneous operation, static electricity, accident, malfunction, repair, or other handlings. Please note in advance that Panasonic is not liable in any way for any direct or indirect damage from the alteration or vanishing of information or personal information.

**When requesting a repair, transferring to another party or disposing**

- Reset the settings to protect the personal information. (P25)
- If there are pictures stored in the built-in memory, copy them onto the memory card (P95) before formatting the built-in memory (P26) as needed.
- Remove the memory card from the camera when requesting a repair.
- Built-in memory and settings may return to factory default when camera is repaired.
- Please contact the dealer where you purchased the camera or your nearest Service Center if above operations are not possible due to malfunction.

**When transferring to another party, or disposing of the memory card, please refer to “Notice for when transferring to another party, or disposing of the memory card” on**

**P114.**

### When not using the camera for a long period of time

- Store the battery in a cool and dry place with a relatively stable temperature: [Recommended temperature: 15 °C to 25 °C (59 °F to 77 °F), Recommended humidity: 40% to 60%]
- Always remove the battery and the card from the camera.
- If the battery is left inserted in the camera, it will discharge even if the camera is turned off. If the battery continues to be left in the camera, it will discharge excessively and may become unusable even if charged.
- When storing the battery for a long period of time, we recommend charging it once a year. Remove the battery from the camera and store it again after it has completely discharged.
- We recommend storing the camera with a desiccant (silica gel) when you keep it in a closet or a cabinet.

### About the picture data

- Recorded data may be damaged or lost if the camera breaks down due to inappropriate handling. Panasonic will not be liable for any damage suffered due to loss of recorded data.

### About tripods or unipods

- When you use a tripod, make sure the tripod is stable when this unit is attached to it.
- You may not be able to remove the card or the battery when using a tripod or unipod.
- Make sure that the screw on the tripod or unipod is not at an angle when attaching or detaching the camera. You may damage the screw on the camera if you use excessive force when turning it. Also, the camera body and the rating label may be damaged or scratched if the camera is attached too tightly to the tripod or unipod.
- Read the operating instructions for the tripod or unipod carefully.
- Some tripods or unipods cannot be attached when the DC coupler (optional) and AC adaptor (optional) are connected.

## Message Display

Confirmation or error messages will be displayed on the screen in some cases. The major messages are described below as examples.

### [THIS MEMORY CARD IS WRITE-PROTECTED]

- The Write-Protect switch on the card is moved to [LOCK]. Move the switch back to unlock it. (P16)

### [NO VALID PICTURE TO PLAY]

- Record a picture or insert a card with a recorded picture and then play it.

### [THIS PICTURE IS PROTECTED]

- Delete the picture after canceling the Protect setting. (P94)

### [THIS PICTURE CANNOT BE DELETED]/[SOME PICTURES CANNOT BE DELETED]

- Pictures not based on the DCF standard cannot be deleted.
  - If you want to delete some pictures, format the card after saving necessary data on a PC etc. (P26)

### [NO ADDITIONAL SELECTIONS CAN BE MADE]

- The number of pictures, which can be set at one time when [MULTI] has been selected for [DELETE MULTI] (P41), [FAVORITE] (P91), [TEXT STAMP] (P86) or [RESIZE] (P88) has been exceeded.
  - Reduce the number of pictures set, and then repeat the operation.
- More than 999 Favorites have been set.

### [CANNOT BE SET ON THIS PICTURE]

- [TEXT STAMP] or [PRINT SET] cannot be set for pictures not based on the DCF standard.

### [NOT ENOUGH SPACE ON BUILT-IN MEMORY]/[NOT ENOUGH MEMORY ON THE CARD]

- There is no space left on the built-in memory or the card.
  - When you copy pictures from the built-in memory to the card (batch copy), the pictures are copied until the capacity of the card becomes full.

**[SOME PICTURES CANNOT BE COPIED]/[COPY COULD NOT BE COMPLETED]**

- The following pictures cannot be copied.
  - When a picture with the same name as the picture to be copied exists in the copy destination. (Only when copying from a card to the built-in memory.)
  - Files not based on the DCF standard.
- Moreover, pictures recorded or edited by other equipment may not be copied.

**[BUILT-IN MEMORY ERROR  
FORMAT BUILT-IN MEMORY?]**

- This message will be displayed when you format the built-in memory on a PC.
  - Format the built-in memory on the camera again. (P26) The data on the built-in memory will be deleted.

**[MEMORY CARD ERROR  
FORMAT THIS CARD?]**

- It is a format that cannot be used with this unit.
  - Format the card again with the camera after saving necessary data on a PC etc. (P26)

**[PLEASE TURN CAMERA OFF AND THEN ON AGAIN]/[SYSTEM ERROR]**

- This message appears when the camera is not operating properly.
  - Turn the camera off and on. If the message persists, contact the dealer or your nearest Service Center.

**[MEMORY CARD PARAMETER ERROR]/[THIS MEMORY CARD CANNOT BE USED]**

- Use a card compatible with this unit. (P16)
- SD Memory Card (8 MB to 2 GB)
- SDHC Memory Card (4 GB to 32 GB)
- SDXC Memory Card (48 GB to 64 GB)

**[INSERT SD CARD AGAIN]/[TRY ANOTHER CARD]**

- An error has occurred accessing the card.
  - Insert the card again.
  - Insert a different card.

**[READ ERROR/WRITE ERROR  
PLEASE CHECK THE CARD]**

- It has failed to read or write data.
  - Remove the card after turning the power [OFF]. Insert the card again, turn the power on, and try to read or write the data again.
- The card may be broken.
  - Insert a different card.

**[MOTION RECORDING WAS CANCELLED DUE TO THE LIMITATION OF THE WRITING SPEED OF THE CARD]**

- Use a card with SD Speed Class\* with "Class 6" or higher when recording motion pictures.
  - \* SD speed class is the speed standard regarding continuous writing.
- In the event that it stops even after using a "Class 6" card or higher, the data writing speed has deteriorated so it is recommended to make a backup and then format (P26).
- Depending on the type of the card, motion picture recording may stop in the middle.

**[A FOLDER CANNOT BE CREATED]**

- A folder cannot be created because there are no remaining folder numbers that can be used. (P98)
  - Format the card after saving necessary data on a PC etc. (P26)

**[PICTURE IS DISPLAYED FOR 4:3 TV]/[PICTURE IS DISPLAYED FOR 16:9 TV]**

- The AV cable is connected to the camera.
  - Press [MENU/SET] if you want to delete this message at once.
  - Select [TV ASPECT] in the [SETUP] menu if you want to change the TV aspect. (P25)
- This message also appears when the USB connection cable is connected to the camera only. In this case, connect the other end of the USB connection cable to a PC or a printer. (P96, 99)

**[PRINTER BUSY]/[PLEASE CHECK THE PRINTER]**

- The printer cannot print.
  - Check the printer.

**[NO BATTERY POWER REMAINS]**

- The remaining battery power is low.
  - Charge the battery.

**[THIS BATTERY CANNOT BE USED]**

- The battery cannot be recognized by the camera.
  - Use a genuine Panasonic battery. If this message is displayed even when a genuine Panasonic battery is used, contact the dealer or your nearest Service Center.
- The battery cannot be recognized as its terminal is dirty.
  - Remove any dirt etc. from the terminal.

## Troubleshooting

First, try out the following procedures (P119–127).

If the problem is not resolved, it may be improved by selecting [RESET] (P25) on the [SETUP] menu when taking pictures.

### Battery and power source

#### The camera cannot be operated even when it is turned on.

- The battery is not inserted correctly. (P13)
- The battery is exhausted.

#### The LCD monitor turns off while the camera is turned on.

- Is [SLEEP MODE] (P24) Mode active?  
→ Press the shutter button halfway to cancel these modes.
- The battery is exhausted.

#### The camera turns off immediately after it is turned on.

- The battery is exhausted.
- If you leave the camera on, the battery will be exhausted.  
→ Turn the camera off frequently by using the [SLEEP MODE] Mode etc. (P24)

#### The [CHARGE] lamp flashes.

- Is the temperature of the battery excessively high or low? If it is, it will take longer than usual to charge the battery or charging may remain incomplete.
- Are the terminals of the charger or battery dirty?  
→ Wipe off the dirt using a dry cloth.

## Recording

### The picture cannot be recorded.

- Is the [REC]/[PLAYBACK] selector switch at the [📷] setting? (P27)
- Is there any memory remaining on the built-in memory or the card?
  - Delete the pictures which are not necessary to increase the available memory. (P40)

### The recorded picture is whitish.

- The picture can become whitish if there is dirt e.g. fingerprints on the lens.
  - If the lens is dirty, turn on the camera, eject the lens barrel (P8) and gently wipe the lens surface with a soft dry cloth.

### The area around where the pictures were taken becomes dark.

- Was this picture taken with the flash at the close range when the zoom was near [W] (1×)?
  - Zoom in a little, and then take the pictures. (P35)

### The recorded picture is too bright or dark.

- Check that the exposure is correctly compensated. (P50)

### 2 or 3 pictures are taken at one time.

- Set other than [HI-SPEED BURST] (P58), [FLASH BURST] (P59) in Scene Mode or [BURST] (P76) of the [REC] Mode menu to [OFF].

### The subject is not focused properly.

- The focus range varies depending on the Recording Mode.
  - Set to the proper mode for the distance to the subject.
- The subject is beyond the focus range of the camera. (P32)
- There is camera shake (jitter) or the subject is moving slightly. (P34)

### The recorded picture is blurred.

- The shutter speed becomes slower when pictures are taken in dark places so hold the camera firmly with both hands to take the pictures. (P28)
- When taking pictures at a slow shutter speed, use the self-timer. (P49)
- When you do not use the Digital Zoom, set it to [OFF] and the sensitivity to [i]ISO. (P71)



### The recorded picture looks rough. Noise appears on the picture.

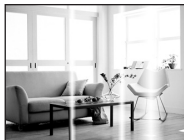
- Is the ISO sensitivity high or the shutter speed slow? (ISO sensitivity is set to [ISO] when the camera is shipped. Therefore, when taking pictures indoors etc. noise will appear.)
  - Decrease the ISO sensitivity. (P71)
  - Set [COLOR MODE] to [NATURAL]. (P77)
  - Take pictures in bright places.
- Has [HIGH SENS.], [HI-SPEED BURST] and [FLASH BURST] in the Scene Mode been set? If so, the resolution of the recorded picture decreases slightly because of high sensitivity processing, but this is not a malfunction.

### The brightness or the hue of the recorded picture is different from the actual scene.

- If recording under fluorescent light, the brightness or the hue may change slightly when the shutter speed becomes fast. This occurs due to the characteristics of fluorescent light. It is not a malfunction.

### When recording pictures or half-pressing the shutter button, reddish stripes may appear on the LCD monitor. Alternatively, part or all of the LCD monitor may turn a reddish color.

- This is a characteristic of CCDs, and it appears when the subject has a bright part. Some unevenness may occur in the surrounding areas, but this is not a malfunction.  
It is recorded in motion pictures but is not recorded on still pictures.
- It is recommended that when you take pictures you take care not to expose the screen to sunlight or any other source of strong light.



### Motion picture recording stops in the middle.

- Use a card with SD Speed Class\* with "Class 6" or higher when recording motion pictures.
  - \* SD speed class is the speed standard regarding continuous writing.
- Depending on the type of the card, recording may stop in the middle.
  - In the event that it stops even after using a "Class 6" card or higher, the data writing speed has deteriorated so it is recommended to make a backup and then format (P26).

### Recorded image may be warped, or nonexistent color is surrounding the subject.

- It is possible that the subject may be warped slightly, or the borders get colored, depending on the zoom magnification, due to the characteristics of the lens. Also, the peripherals of the image might look warped because the perspective is enhanced when the wide angle is used. This is not a malfunction.

## LCD monitor

### The LCD monitor turns off although the camera is turned on.

- LCD monitor will turn off when [SLEEP MODE] (P24) is activated.  
[This does not happen when using the AC adaptor (optional).]

### The LCD monitor darkens during use.

- This camera automatically charges for flash recording and may darken the LCD monitor for efficient charge. The monitor may darken in the following cases;
  - Just after turning the camera ON
  - Just after setting to Recording Mode
  - When adjusting the zoom or pointing the camera toward a dark sideThe LCD monitor lights up again to return to recording-ready condition after charging the flash.

### The LCD monitor becomes darker or brighter for a moment.

- This phenomenon appears when you press the shutter button halfway to set the aperture value and does not affect the recorded pictures.
- This phenomenon also appears when the brightness changes when the camera is zoomed or when the camera is moved. This is because of operation of the automatic aperture of the camera, and it is not a malfunction.

### The LCD monitor flickers indoors.

- The LCD monitor may flicker for a few seconds after turning the camera on indoors under fluorescent light. This is not a malfunction.

### The LCD monitor is too bright or dark.

- [POWER LCD] or [HIGH ANGLE] is activated. (P24)

### Black, red, blue and green dots appear on the LCD monitor.

- This is not a malfunction.  
These pixels do not affect the recorded pictures.

### Noise appears on the LCD monitor.

- In dark places, noise may appear to maintain the brightness of the LCD monitor. This does not affect the pictures you are recording.

### Distortion appears in the LCD monitor.

- If the LCD monitor is pressed with a finger and pressure is applied, distortion (uneven colors) will appear on the screen, but this is not a malfunction.

## Flash

**The flash is not activated.**

- Is the flash setting set to [📷]?  
→ Change the flash setting. (P43)
- Flash Mode is not available when [BURST] (P76) in [REC] Mode menu has been set.

**Flash is activated several times.**

- The flash is activated three times when red-eye reduction (P44) has been set.
- Has [FLASH BURST] (P59) in Scene Mode been set?

## Playback

**The picture being played back is rotated and displayed in an unexpected direction.**

- Use [ROTATE]. (P90)

**The picture is not played back.  
There are no recorded pictures.**

- Is the [REC]/[PLAYBACK] selector switch set to [▶]? (P37)
- Is there a picture on the built-in memory or the card?  
→ The pictures on the built-in memory appear when a card is not inserted. The picture data on the card appears when a card is inserted.
- Is this a picture whose file name has been changed in the PC? If it is, it cannot be played back by this unit.
- Has [FAVORITE PLAY] been set for playback?  
→ Change to [NORMAL PLAY]. (P37)

**The folder number and the file number are displayed as [—] and the screen turns black.**

- Is this a non-standard picture, a picture which has been edited using a PC or a picture which was taken by another maker of digital cameras?
- Did you remove the battery immediately after picture-taking or did you take the picture using a battery with a low remaining charge?  
→ Format the data to delete the pictures mentioned above. (P26)  
(Other pictures will be deleted as well and it will not be possible to restore them. Therefore, check well before formatting.)

**With a calendar search, pictures display dates differing from the actual dates on which the pictures were taken.**

- Is the clock in the camera set properly? (P17)
- When pictures edited using a PC or pictures taken by other equipment are searched, they may display dates differing from the actual dates on which the pictures were taken.

**White round spots like soap bubbles appear on the recorded picture.**

- If you take a picture with the flash in a dark place or indoors, white round spots may appear on the picture caused by the flash reflecting off of particles of dust in the air. This is not a malfunction.  
A characteristic of this is that the number of round spots and their position differ in every picture.



**Red part of the recorded image has changed color to black.**

- When Digital Red-Eye Correction ([], [], []) is in operation, if you take a picture of subject with red color surrounded by a skin tone color, that red part may be corrected to black by the Digital Red-Eye Correction function.  
→ It is recommend to take picture with flash mode set to [A], [], or [], or [RED-EYE REMOVAL] on the [REC] Mode menu set to [OFF]. (P78)

**[THUMBNAIL IS DISPLAYED] appears on the screen.**

- Is it a picture that has been recorded with other equipment? In such cases, these pictures may be displayed with a deteriorated picture quality.

**The sound of the recorded motion pictures sometimes breaks up.**

- This unit automatically adjusts the aperture during motion picture recording. At such times, the sound may break up. This is not a malfunction.

## TV, PC and printer

### The picture does not appear on the television.

- Is the camera connected to the TV correctly?  
→ Set the TV input to External Input Mode.

### The display areas on the TV screen and the camera's LCD monitor are different.

- Depending on the TV model, the pictures may be elongated horizontally or vertically or they may be displayed with their edges cut off.

### The motion pictures cannot be played back on a TV.

- Are you trying to play back the motion pictures by directly inserting the card in the card slot of the TV?  
→ Connect the camera to the TV with the AV cable (supplied) and then play back the pictures on the camera. (P105)

### The picture is not displayed fully on the TV.

- Check [TV ASPECT] setting. (P25)

### The picture cannot be transferred when the camera is connected to a PC.

- Is the camera connected to the PC correctly?
- Is the camera recognized by the PC correctly?  
→ Select [PC] when connecting. (P96)

### The card is not recognized by the PC. (The built-in memory is recognized.)

- Disconnect the USB connection cable. Connect it again while the card is inserted in the camera.

### The card is not recognized by the PC. (SDXC memory card is used)

- Check if your PC is compatible with SDXC memory cards.  
<http://panasonic.net/avc/sdcard/information/SDXC.html>
- A message prompting to format the card may be displayed when connecting, but do not format.
- If the [ACCESS] displayed on the LCD monitor does not disappear, disconnect the USB connection cable after turning off the power.


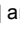
### The picture cannot be printed when the camera is connected to a printer.

- Pictures cannot be printed using a printer which does not support PictBridge.  
→ Select [PictBridge(PTP)] when connecting. (P99)

### The ends of the pictures are cut at printing.

- When using a printer with a Cropping or borderless printing function, cancel this function before printing. (For details, refer to the operating instructions for the printer.)
- When you order photo studios to print pictures, ask the photo studio if the 16:9 pictures can be printed.

**Others****An unreadable language was selected by mistake.**

- Press [MENU/SET], select the [SETUP] menu icon [>] and then select the [>] icon to set the desired language. (P26)

**A red lamp sometimes turns on when the shutter button is pressed halfway.**

- In dark places, the AF assist lamp (P78) lights red to make it easier to focus on a subject.

**The AF assist lamp does not turn on.**

- Is [AF ASSIST LAMP] on the [REC] Mode menu set to [ON]? (P78)
- The AF assist lamp does not turn on in bright places.

**The camera becomes warm.**

- The surface of the camera may become warm during use. This does not affect the performance or quality of the camera.

**The lens clicks.**

- When the brightness changes due to zoom or camera movement etc., the lens may click and the picture on the screen may drastically change. However, the picture is not affected. The sound is caused by the automatic adjustment of the aperture. This is not a malfunction.

**The clock is reset.**

- If you do not use the camera for a long time, the clock may be reset.
  - [PLEASE SET THE CLOCK] message will be displayed; please re-set the clock. When taking pictures, it will not be possible to record the correct date without setting the clock. (P17)

**When pictures are taken using the zoom, they are slightly distorted and the areas around the subject contain colors which are not actually present.**

- At some magnification levels, the pictures taken are slightly distorted or the outlines and other areas in the pictures taken are colored, but this is not a malfunction.

**Zooming stops instantaneously.**

- When using the Extended Optical zoom, the zooming action will stop temporarily. This is not a malfunction.

**The file numbers are not recorded consecutively.**

- When you perform an operation after taking a certain action, the pictures may be recorded in folders with different numbers from the ones used prior to the operation. (P98)

**The file numbers are recorded in ascending order.**

- If the battery was inserted or removed without first turning the camera's power off, the folder and file numbers for the pictures taken will not be stored in the memory. When the power is then turned back on and pictures are taken, they may be stored under file numbers which should have been assigned to previous pictures.

**[AGE] is not displayed correctly.**

- Check the clock (P17) and birthday settings (P56).

**The lens barrel is retracted.**

- The lens barrel retracts about 15 seconds after switching from [REC] Mode to [PLAYBACK] Mode.

**When the camera is left alone, the Slide Show is suddenly displayed.**

- This is the [AUTO DEMO] which introduces the features of the camera. Press a button to return the camera to the original screen.

**You hear sounds from the lens.**

- This camera uses the AF function when taking pictures. It may make a sound when focusing on subjects etc., but this is not malfunction.

## Number of Recordable Pictures and Available Recording Time

- The number of recordable pictures and the available recording time are an approximation. (These vary depending on the recording conditions and the type of card.)
- The number of recordable pictures and the available recording time varies depending on the subjects.

### ■ Number of recordable pictures

Picture Size		4:3 12M	4:3 8M EZ	4:3 5M EZ	4:3 3M EZ	4:3 0.3M EZ
<b>Built-in Memory</b> (Approx. 40 MB)		10	15	21	26	200
<b>Card</b>	256 MB	61	91	120	150	1170
	512 MB	120	180	240	300	2320
	1 GB	240	360	480	600	4310
	2 GB	490	740	990	1220	8780
	4 GB	970	1450	1940	2410	17240
	6 GB	1470	2210	2950	3670	26210
	8 GB	1980	2950	3960	4910	35080
	12 GB	2980	4460	5970	7400	52920
	16 GB	3980	5950	7970	9880	70600
	24 GB	5780	8640	11570	14350	102500
	32 GB	7990	11940	15980	19820	141620
48 GB	11750	17340	22760	28020	182140	
64 GB	15940	23530	30890	38020	247160	

Picture Size		3:2 10.5M	16:9 9M
<b>Built-in Memory</b> (Approx. 40 MB)		11	14
<b>Card</b>	256 MB	69	81
	512 MB	135	160
	1 GB	270	320
	2 GB	550	650
	4 GB	1080	1280
	6 GB	1650	1950
	8 GB	2210	2610
	12 GB	3330	3940
	16 GB	4450	5250
	24 GB	6460	7630
	32 GB	8930	10540
48 GB	13010	15170	
64 GB	17650	20590	



## ■ Available recording time (when recording motion pictures)

Recording Quality setting		HD	WVGA	VGA	QVGA
Built-in Memory (Approx. 40 MB)		–	–	–	1 min 19 s
Card	256 MB	1 min 00 s	2 min 20 s	2 min 40 s	7 min 40 s
	512 MB	2 min 00 s	4 min 30 s	5 min 20 s	14 min 50 s
	1 GB	4 min 00 s	9 min 10 s	10 min 40 s	29 min 30 s
	2 GB	8 min 20 s	18 min 50 s	21 min 40 s	1 h 0 min
	4 GB	16 min 20 s	37 min 10 s	42 min 40 s	1 h 58 min
	6 GB	25 min 00 s	56 min 30 s	1 h 5 min	2 h 59 min
	8 GB	33 min 30 s	1 h 15 min	1 h 27 min	4 h 0 min
	12 GB	50 min 30 s	1 h 54 min	2 h 11 min	6 h 3 min
	16 GB	1 h 7 min	2 h 32 min	2 h 55 min	8 h 4 min
	24 GB	1 h 38 min	3 h 41 min	4 h 14 min	11 h 43 min
	32 GB	2 h 15 min	5 h 5 min	5 h 51 min	16 h 11 min
	48 GB	3 h 15 min	7 h 13 min	8 h 25 min	20 h 13 min
64 GB	4 h 25 min	9 h 48 min	11 h 26 min	27 h 27 min	

### (DMC-F3P/DMC-F3PC/DMC-F3PU)

- \* Motion pictures can be recorded continuously up to 2 GB.

The maximum available recording time for up to 2 GB only is displayed on the screen.

### (DMC-F3PR)

- \* Motion pictures can be recorded continuously for up to 15 minutes. Also, continuous recording exceeding 2 GB is not possible. (Example: [8m 20s] with [HD])  
Remaining time for continuous recording is displayed on the screen.

### Note

- The number of recordable pictures and the available recording time displayed on the screen may not decrease in order.
- The Extended Optical Zoom does not work in [HIGH SENS.], [HI-SPEED BURST] and [FLASH BURST] in Scene Mode so the Picture Size for [**171**] is not displayed.

- SDXC Logo is a trademark of SD-3C, LLC.
- QuickTime and the QuickTime logo are trademarks or registered trademarks of Apple Inc., used under license therefrom.
- Microsoft product screen shot(s) reprinted with permission from Microsoft Corporation.
- Other names, company names, and product names printed in these instructions are trademarks or registered trademarks of the companies concerned.

